



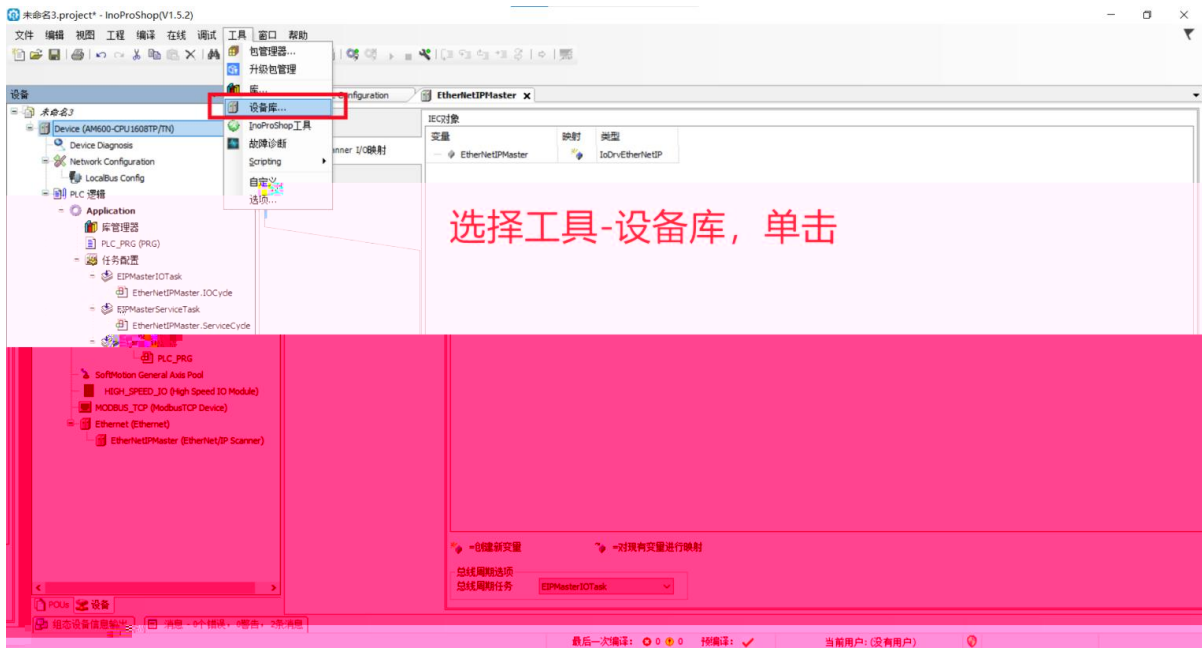
2021-6-3

2021 06 03

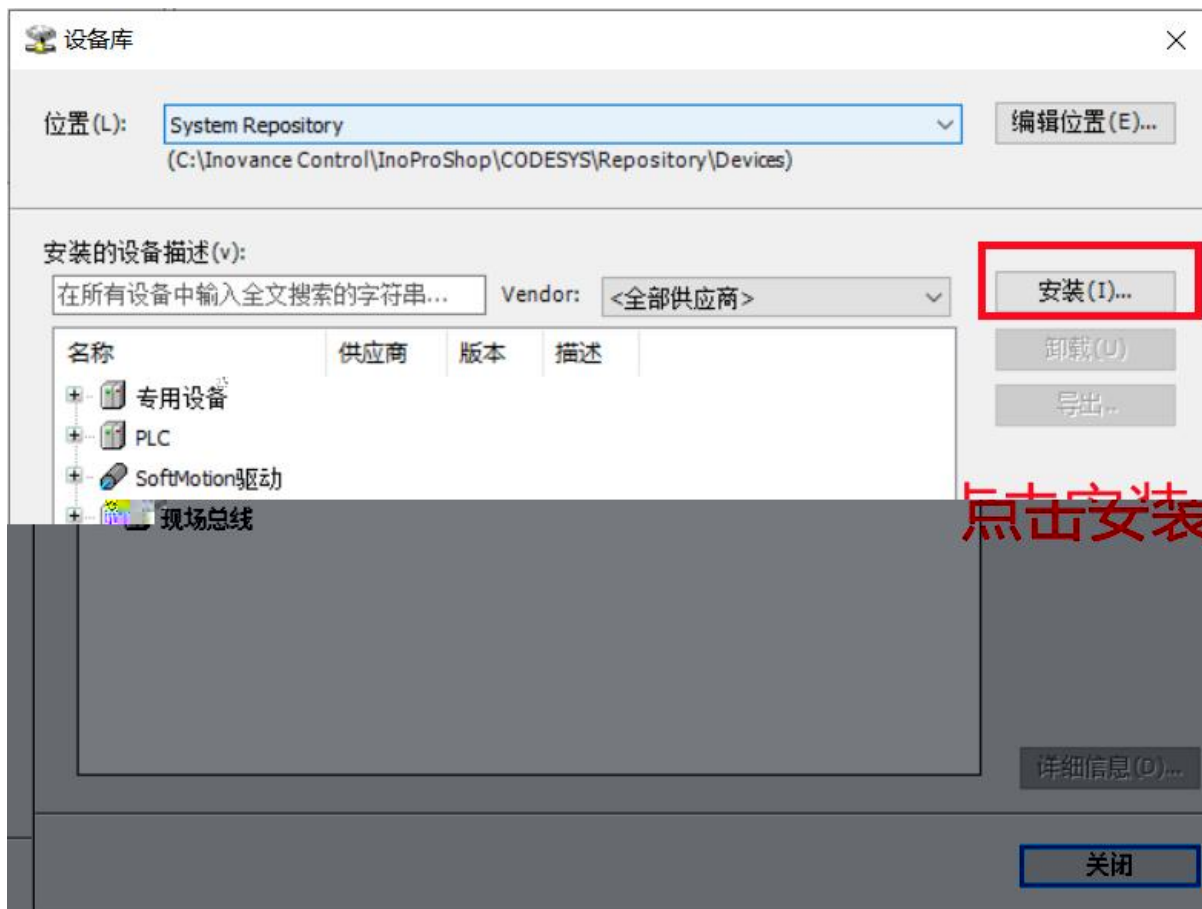
2021 06 03



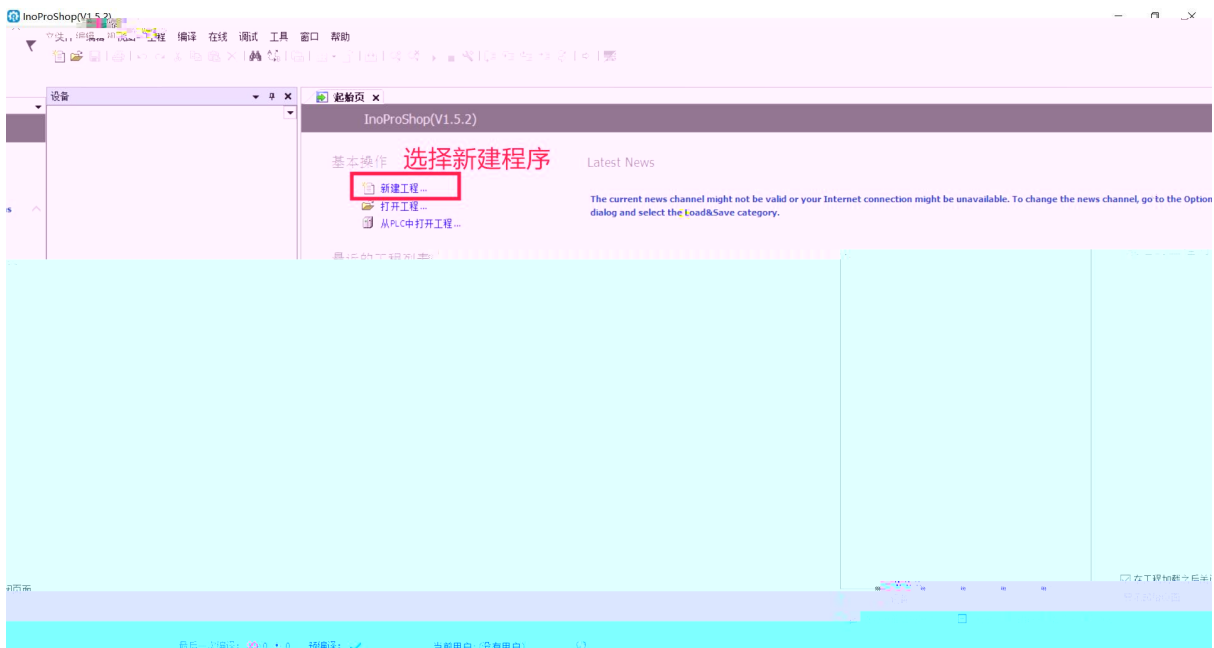
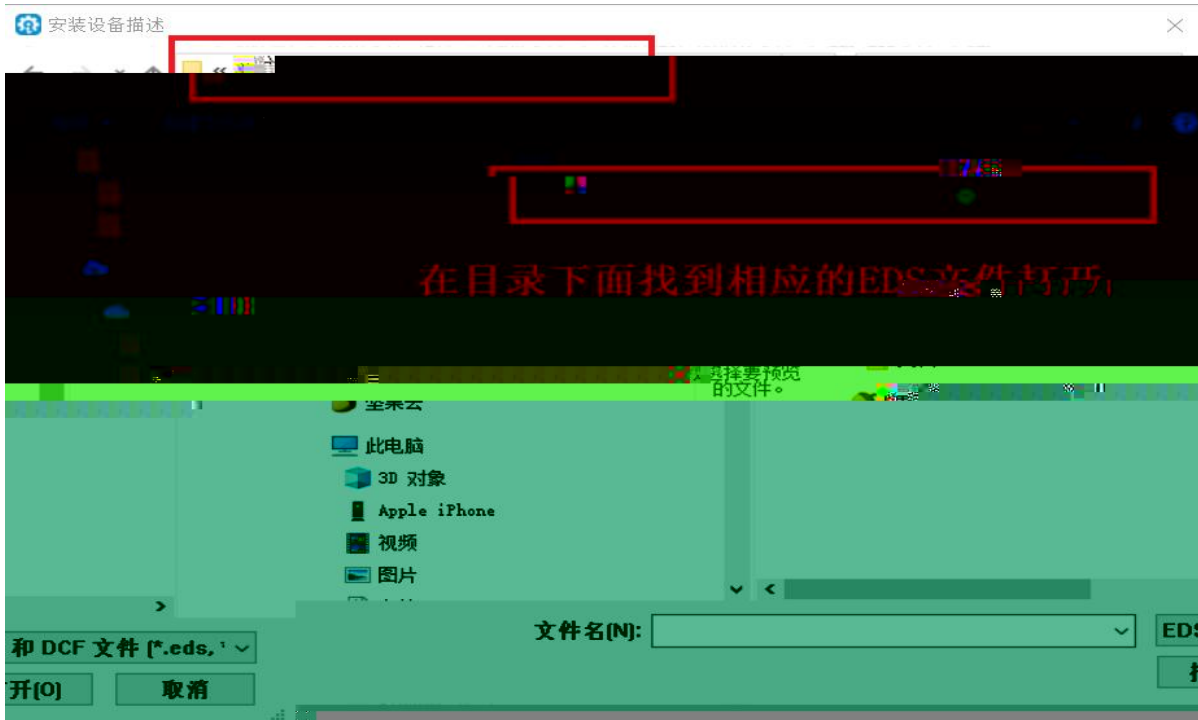
1. InoProShop(V1.5.2)



2.



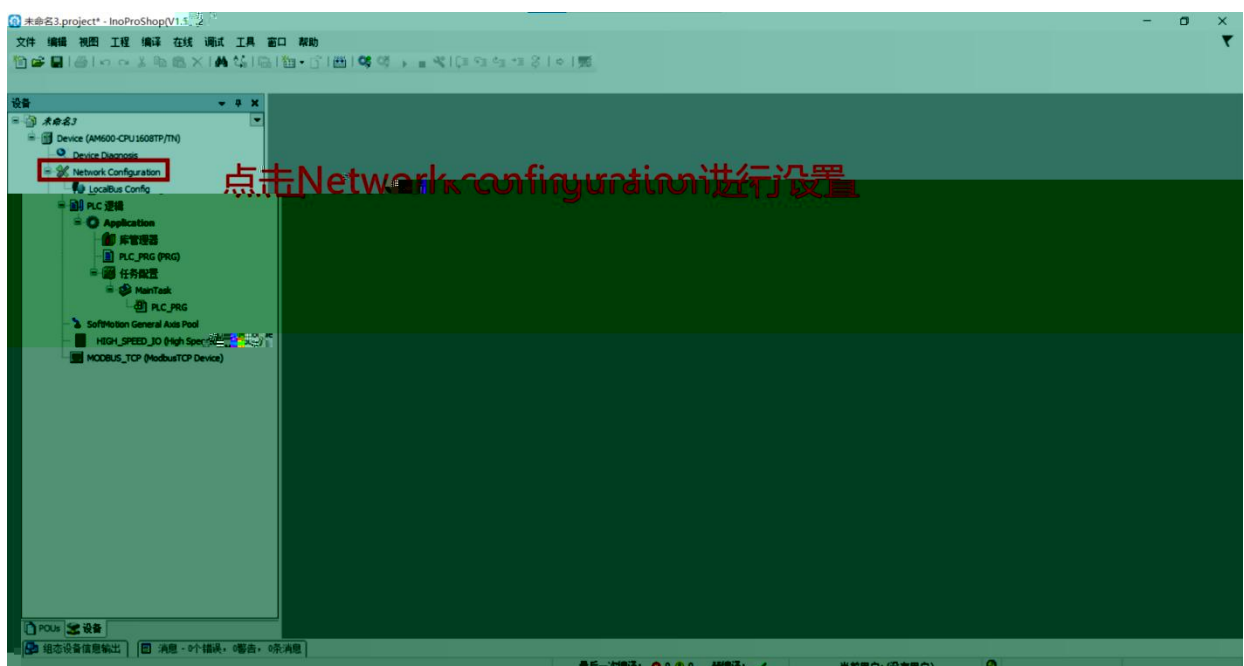
### 3. EDS



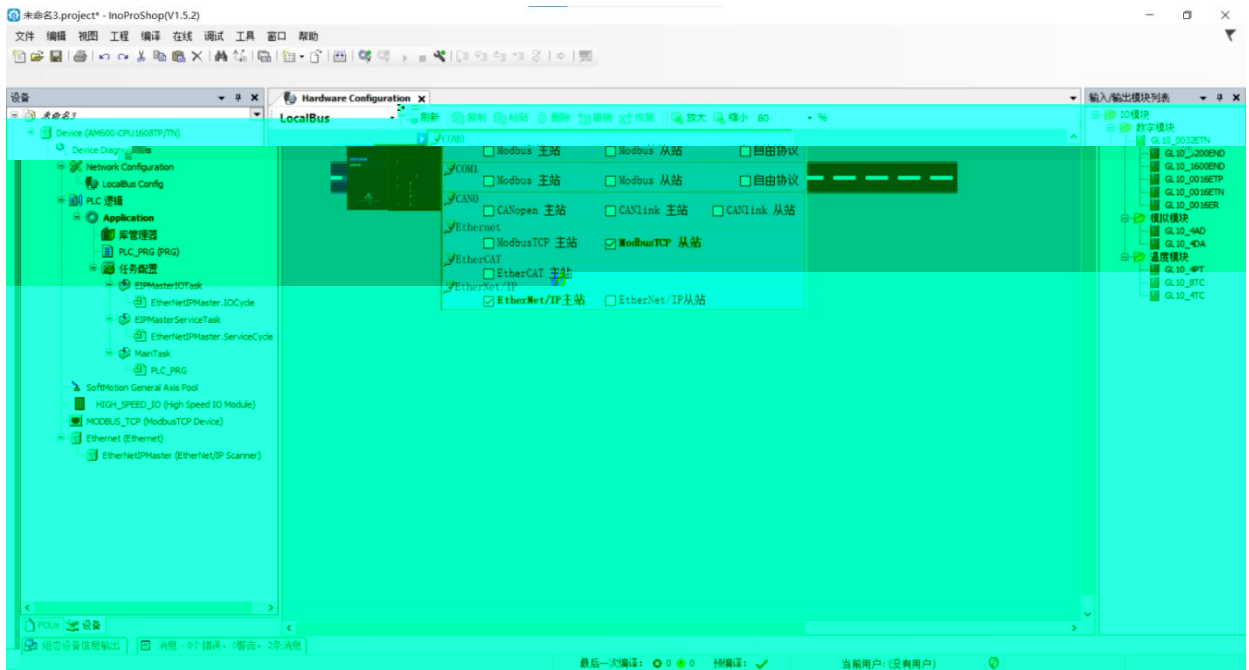
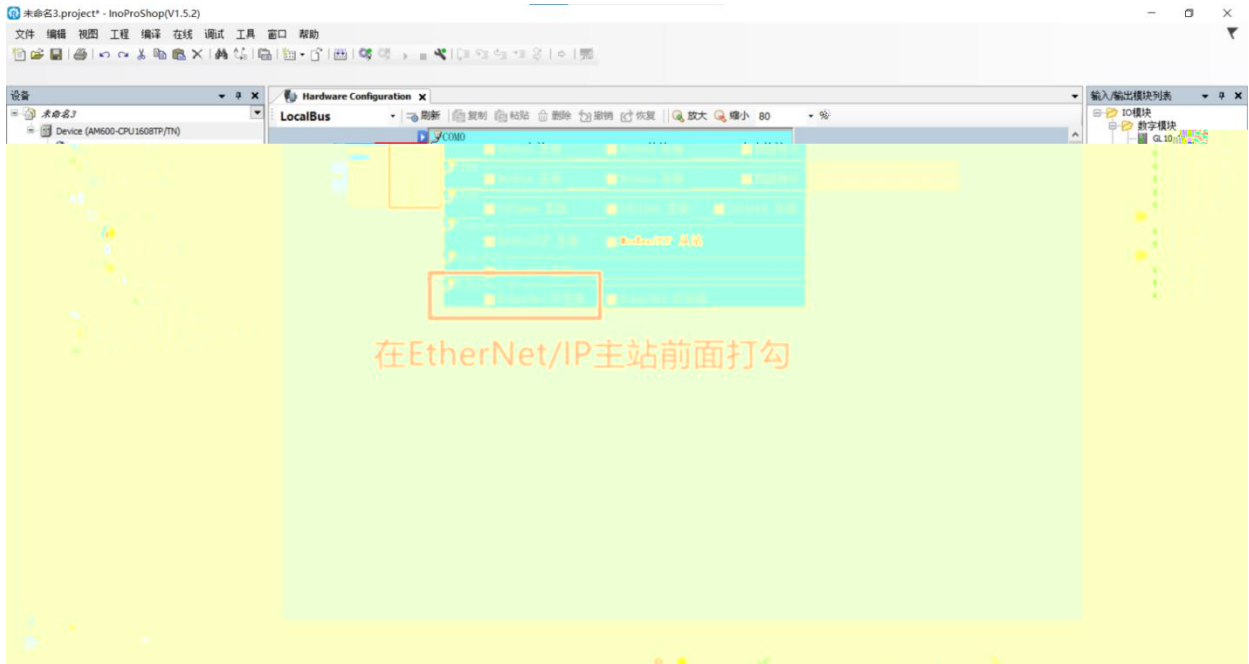
## PLC



## Network configuration



# EtherNet/IP



# EtherNet/IP

未命名3.project\* - InoProShop(V1.5.2)

添加设备

名称:

动作:

附加设备  插入设备  更新设备

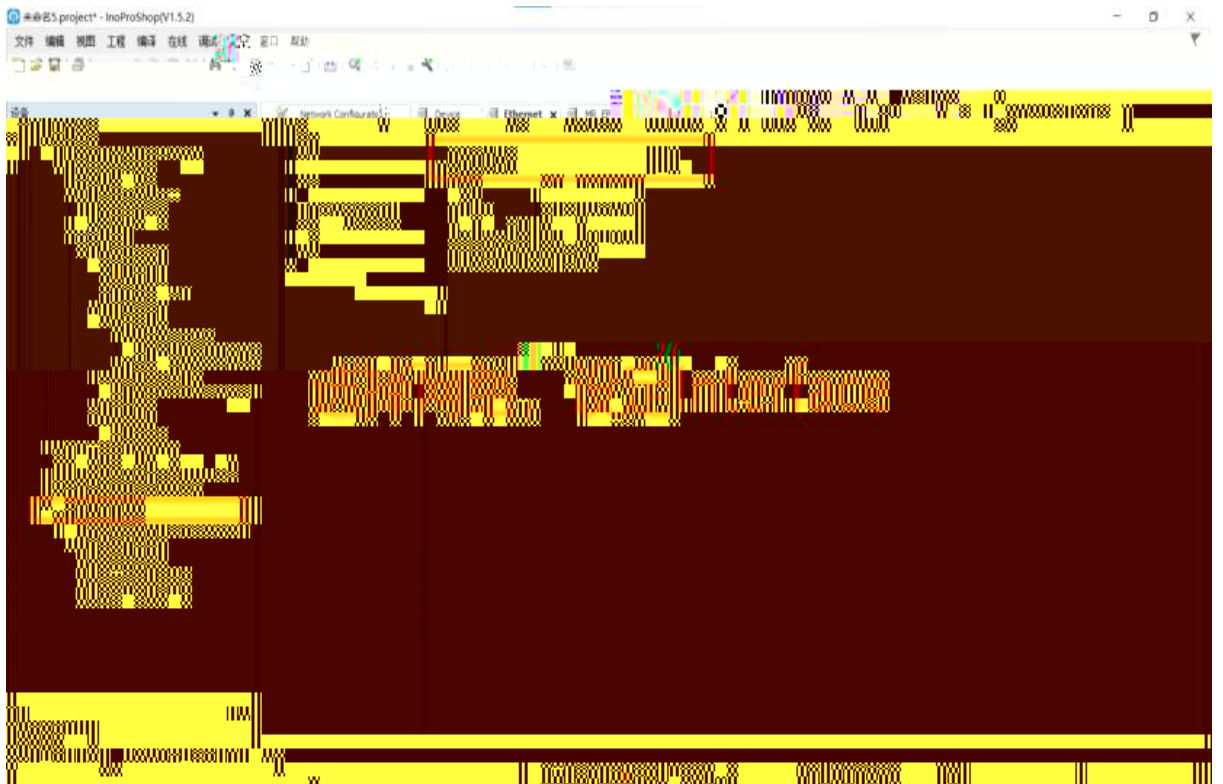
在所有设备中输入全文搜索的字符串... 供应商: LATCOS

名称	供应商	版本	描述
现场总线			
EthernetIP			
EthernetIP目标			
MR-EP	LATCOS	Major Revision=16#2, Minor Revision=1	

选择供应商，然后选中EthernetIP目标

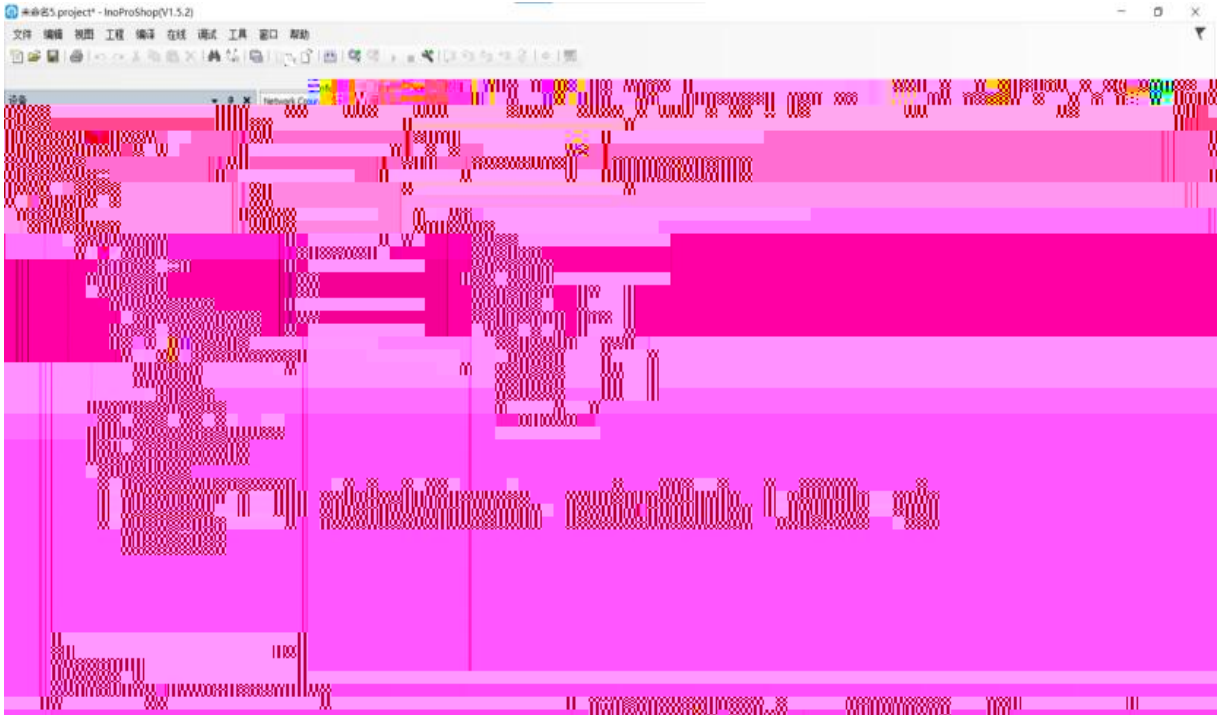
添加从站设备

在设备列表中选择目标





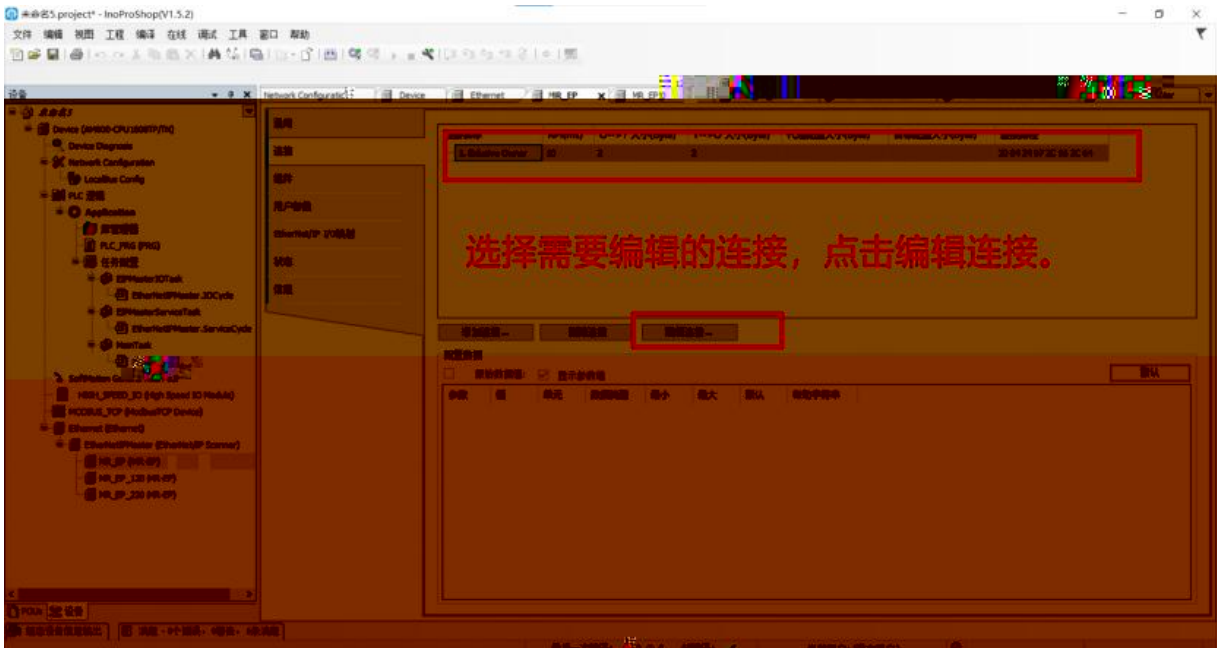
IP



MR1616x-EP

16

16





EIP Byte

Point to Point connection RPI 10-30

Input Data Output Data 1 =8

	MR080X- EP	MR1616X- EP	MR1600X- EP	MR3200X- EP	MRO016X- EP	MRO032X- EP
Input Data	1	2	2	4	0	0
Output Data	1	2	-	-	2	4
	Exclusive owner		Input Only		Exclusive owner	

" "



