

2023-03-23

2023 03 23

2023 03 23

R PLC CCLINK_IE_Field Basic MR-CE IO

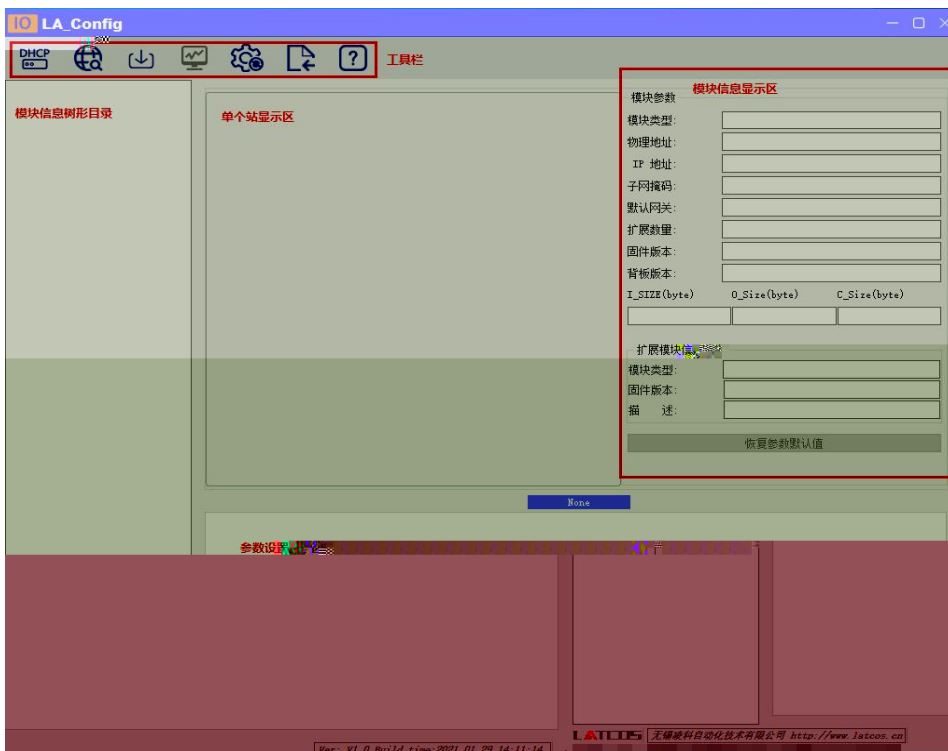
R PLC CCLINK_IE_Field Basic MR-CE IO GX-WORKS3
IO

- GX-WORKS3

1. R PLC IO

2. PLC Ethernet CCLINK_IE_Field Basic IO

LAEConfig IP IP 192.168.0.x



						
DHCP 服务	扫描 模块	下载 参数	监控	参数	描述文 件导入	帮助

IP地址范围: 192 . 168 . 0 . 1 — 192 . 168 . 0 . 255

0%

开始 停止



IP

IP

IP

LA_Config

MR0808X-CE(192.168.0.2)


模块名称: MR0808X-CE
模块类型: MR0808X-CE
物理地址: 7C-BA-CC-15-5C-5E

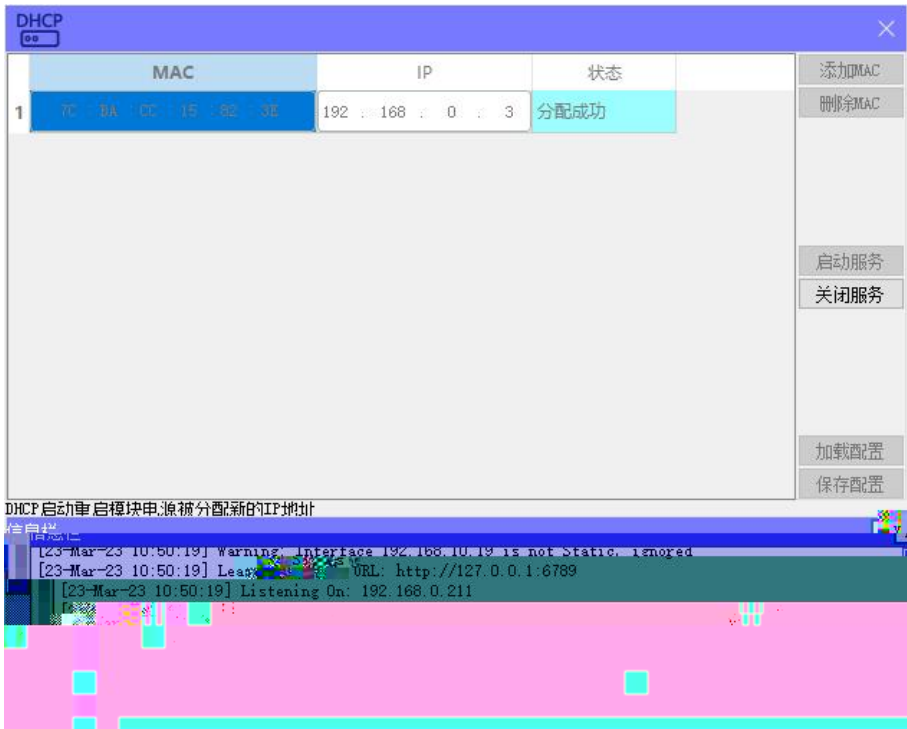
1

"IP"

IP"




 DHCPService " MAC" " MAC"
 MAC IP " "
 IP



" "

2



mac	IP地址	子网掩码	默认网关	模块名称	状态
-----	------	------	------	------	----

扫描时间 5 :S

全局扫描 修改IP 恢复出厂设置 重启模块

mac IP地址 子网掩码 默认网关

IP " IP" IP

GX Words 3

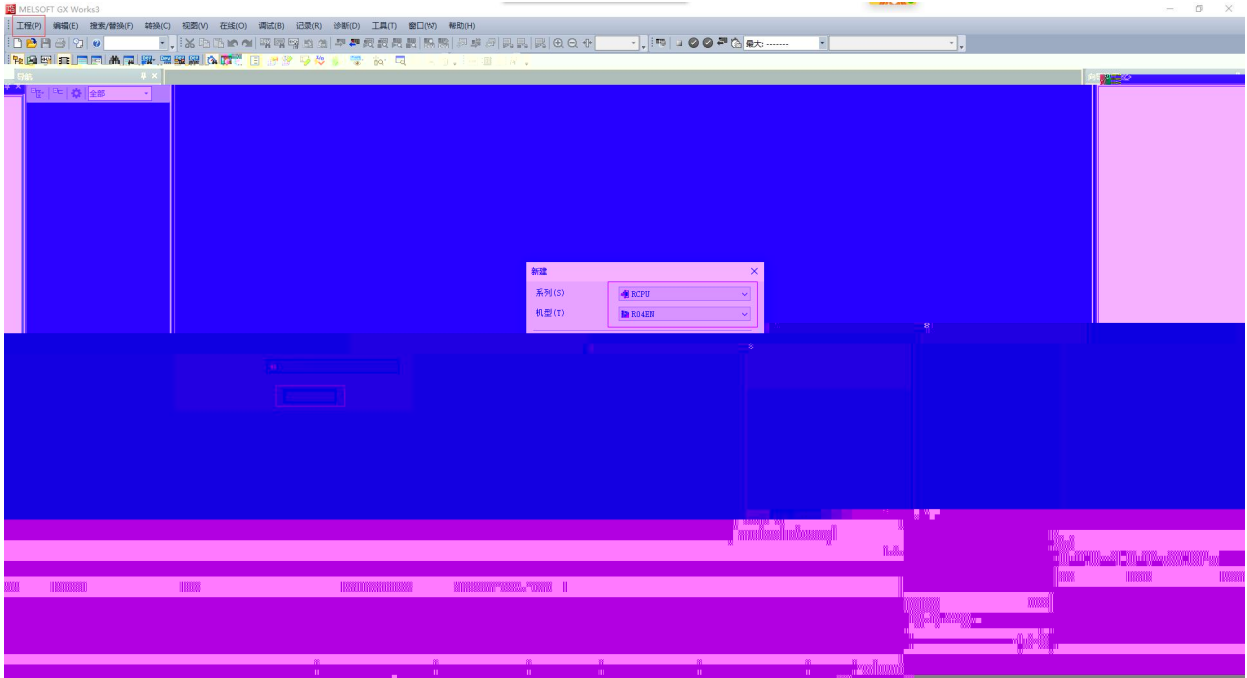
" " " " "

PLC

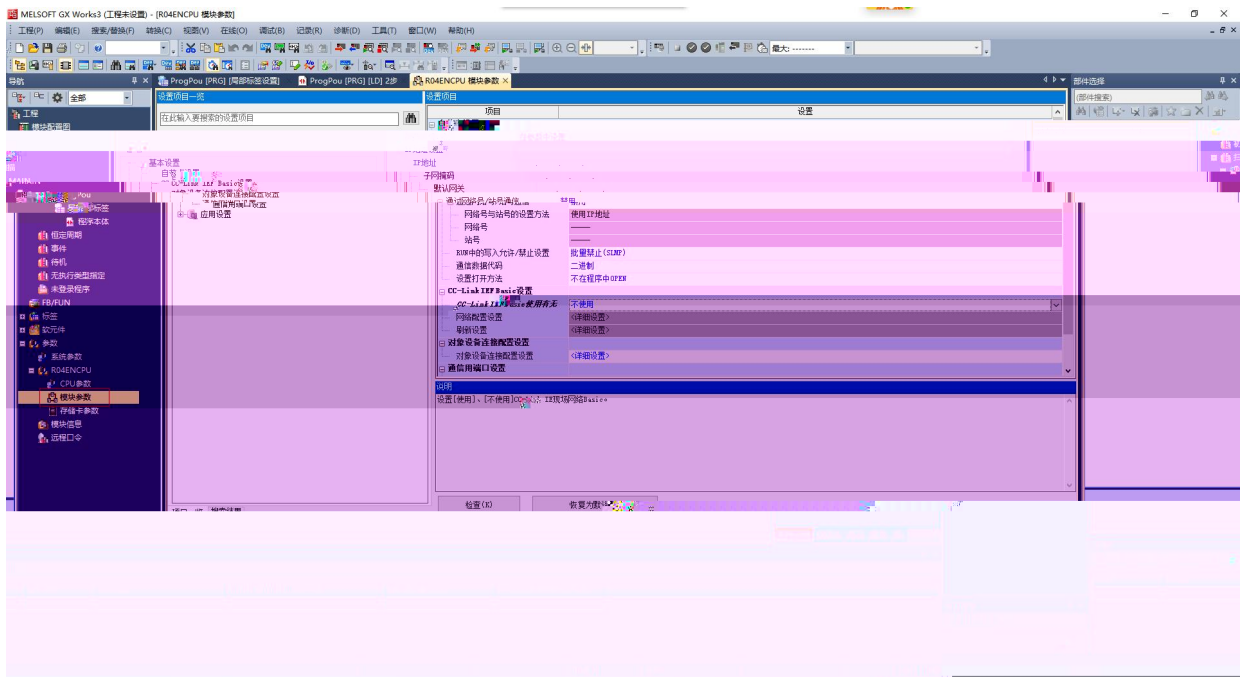
CPU

5U

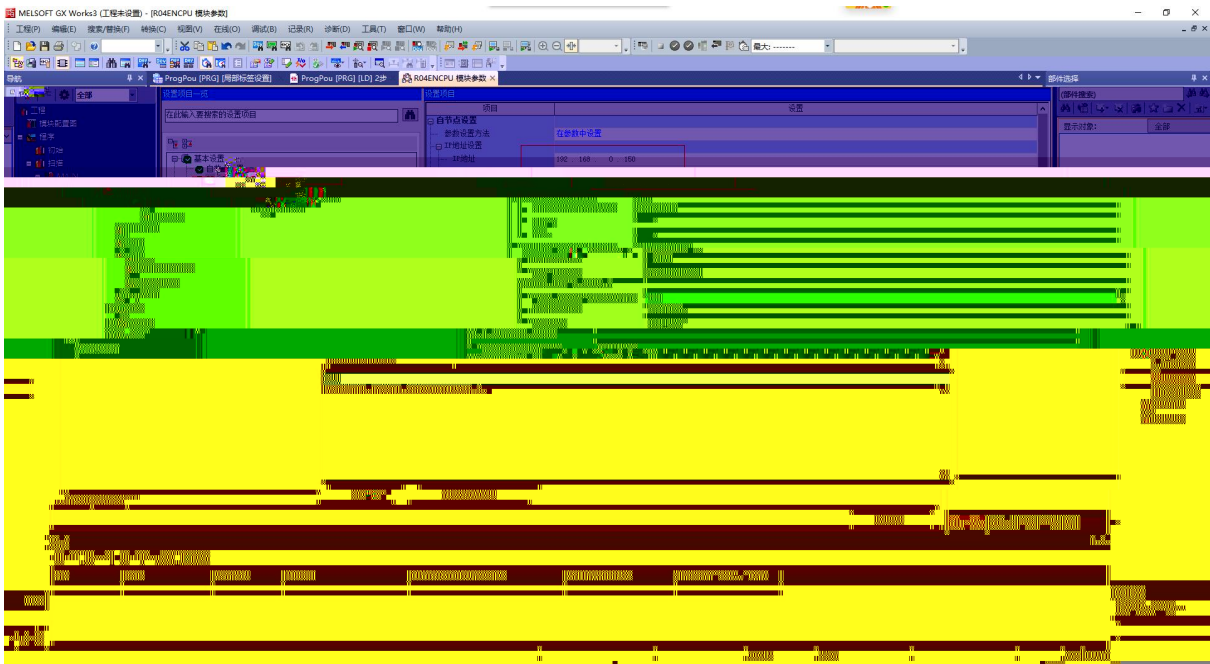
CPU



/FX5UCPU/ /

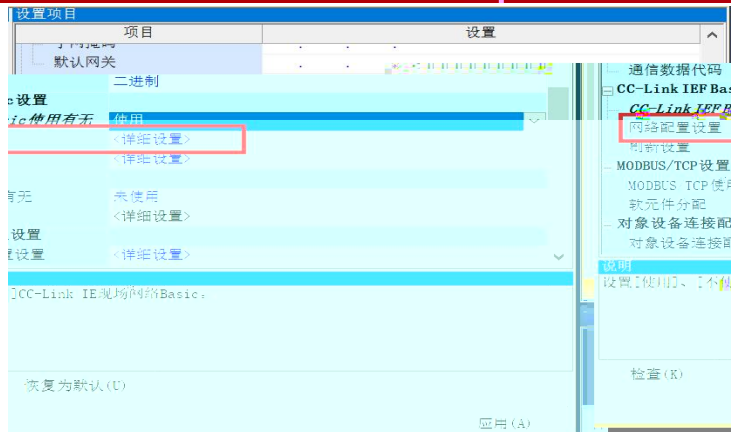
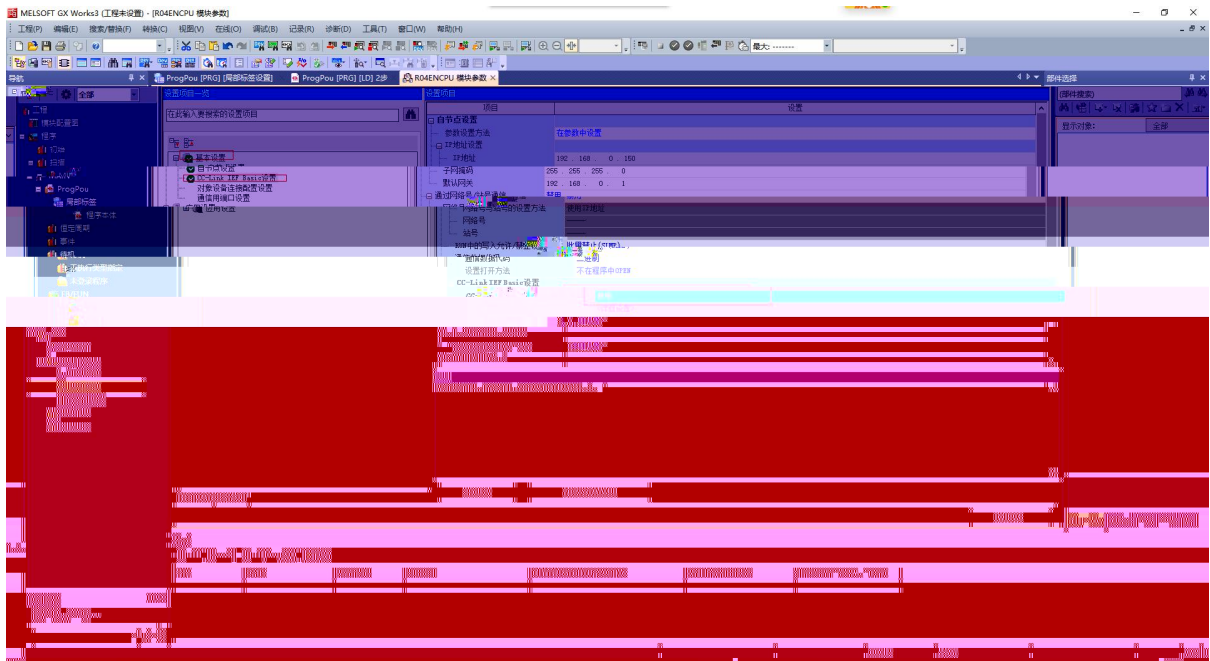


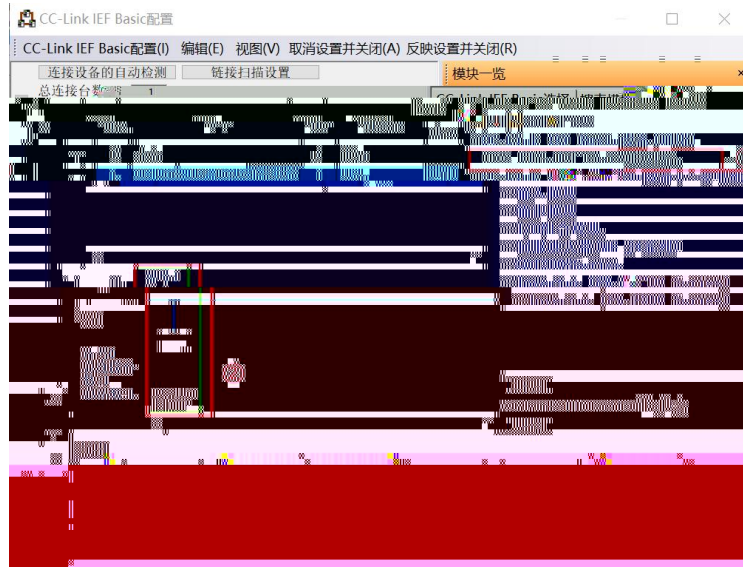
PLC IP



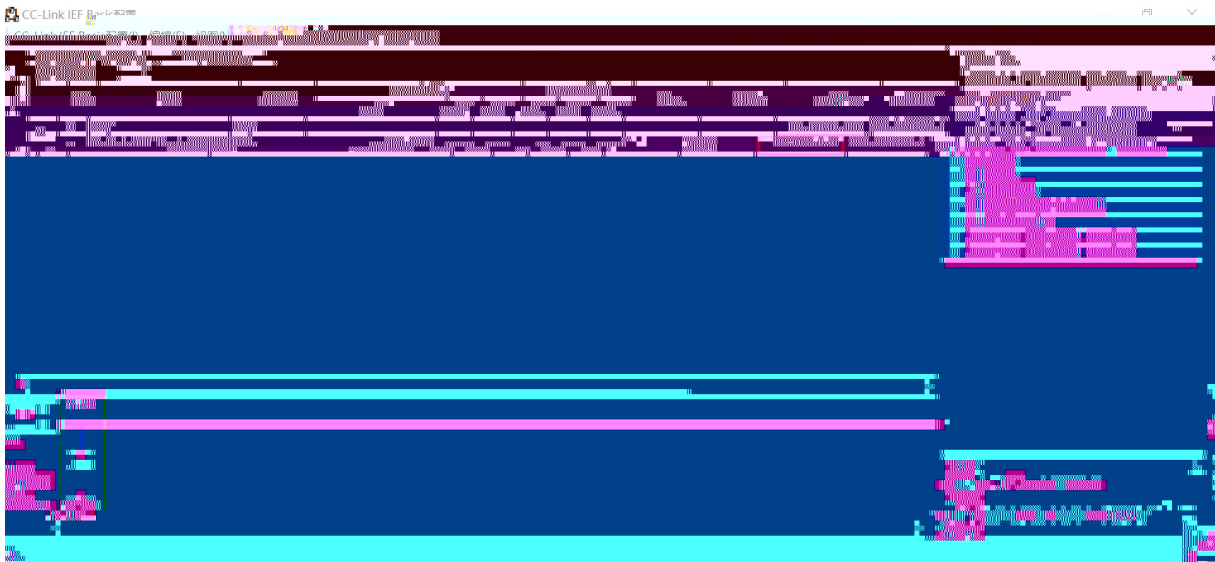
CC-Link IE Field Basic

CC-Link IE Field Basic

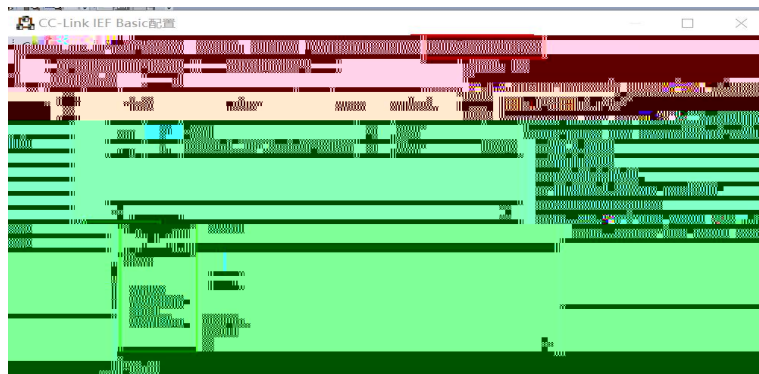


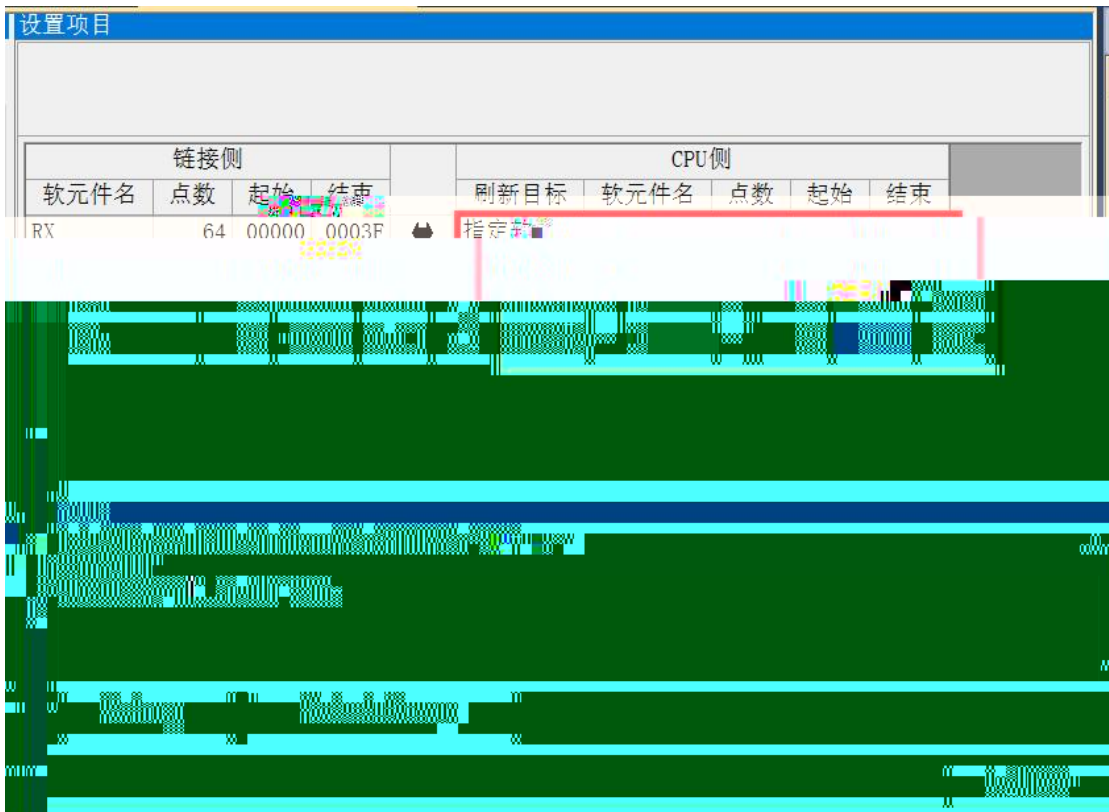
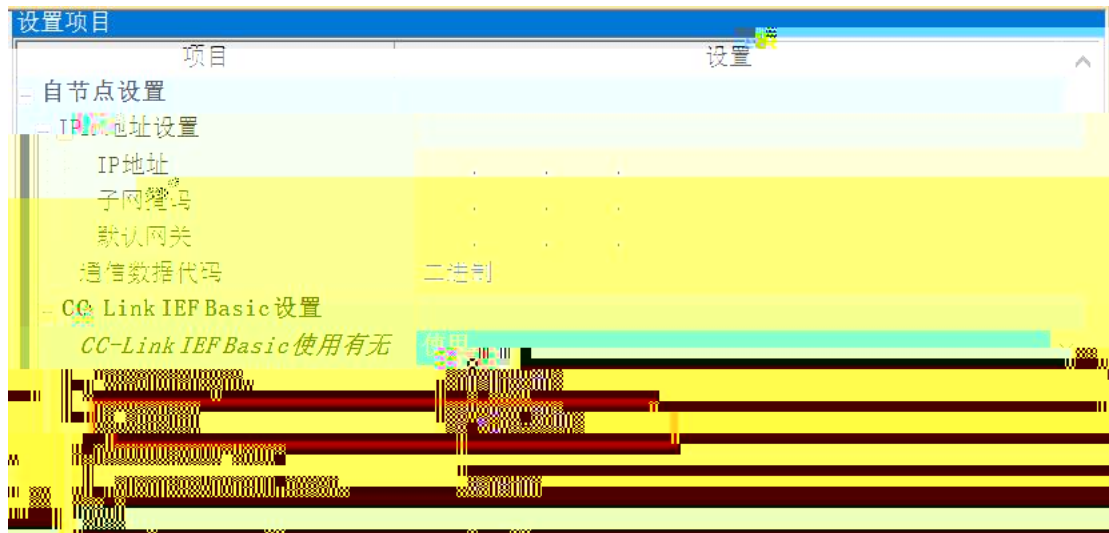


CC-Link IE Field Basic IP



" "





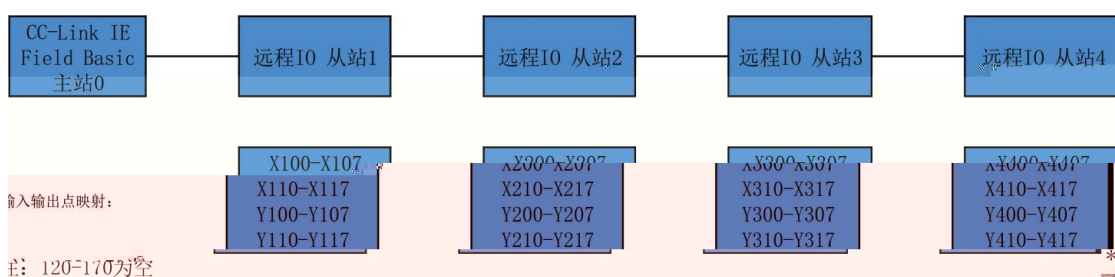
CC-Link IE Field Basic

64

64DI 64DO

X100,Y100

IO



Field Basic IO PLC “ ”CC-Link IE

The image shows a screenshot of the CC-Link IEF Basic diagnostic software. The window title is "CC-Link IEF Basic 诊断". The interface includes a logo for CC-Link IE Field Basic, a radio button for "IP地址显示切换" (IP address display switching) set to "10进制(D)", and another radio button for "16进制(H)". Below this, there are radio buttons for "对象模块指定" (Object module specification) set to "CPU(P)". A status bar shows "主站状态" (Master station status) with a red alarm icon, a station count of 1, IP address 192.168.0.150, and error code "无错误" (No error). A "错误详细(E)..." button is present. The main area shows "概略诊断" (Overview diagnosis) with a green header and a large red area below it, indicating a connection scan failure. The red area contains some faint text and a red error icon.

