

透科自动化

APG1503

KV8000

ethernetip)

Ethernet/IP APG-1503 KV8000



2021-4-13	
2021 04 13	2021 04 13

1.

KV STUDIO Ver.10G

2.

KV8000 Ethernet/IP APG 1503 KV STUDIO Ver.10G
APG 1503 .eds PLC modbus

3.

- KV STUDIO Ver.10G
- IO APG 1503.eds

4.

4.1

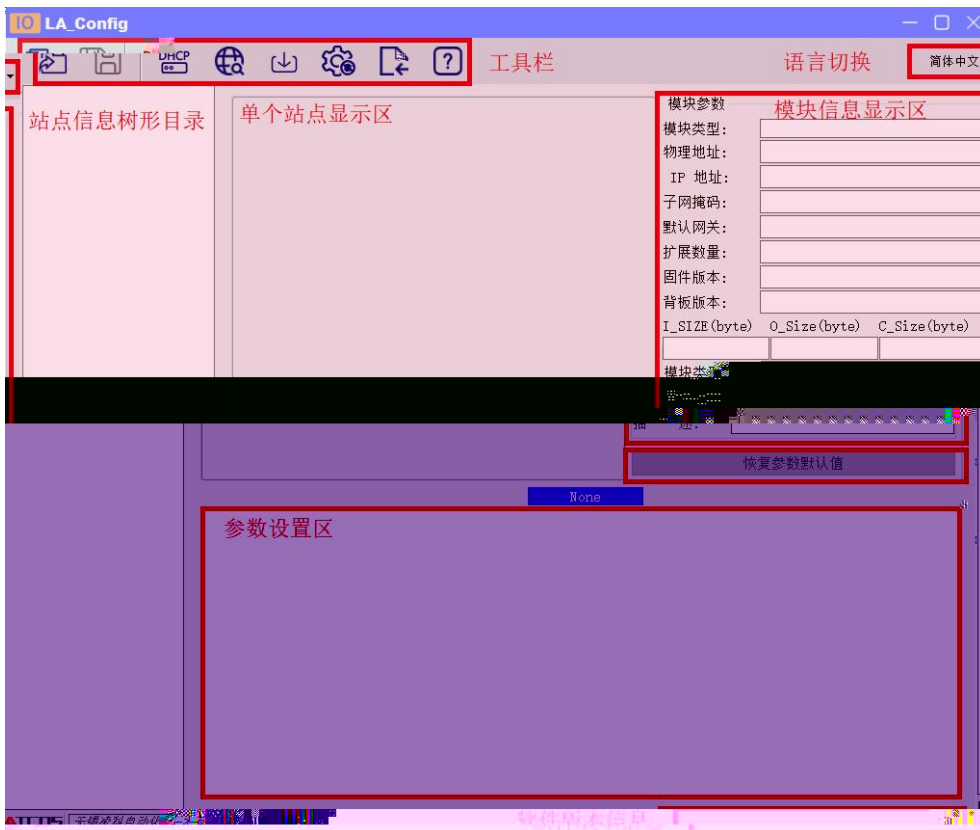
- 1. KV8000
- 2. PLC Ethernet

4.2

IP

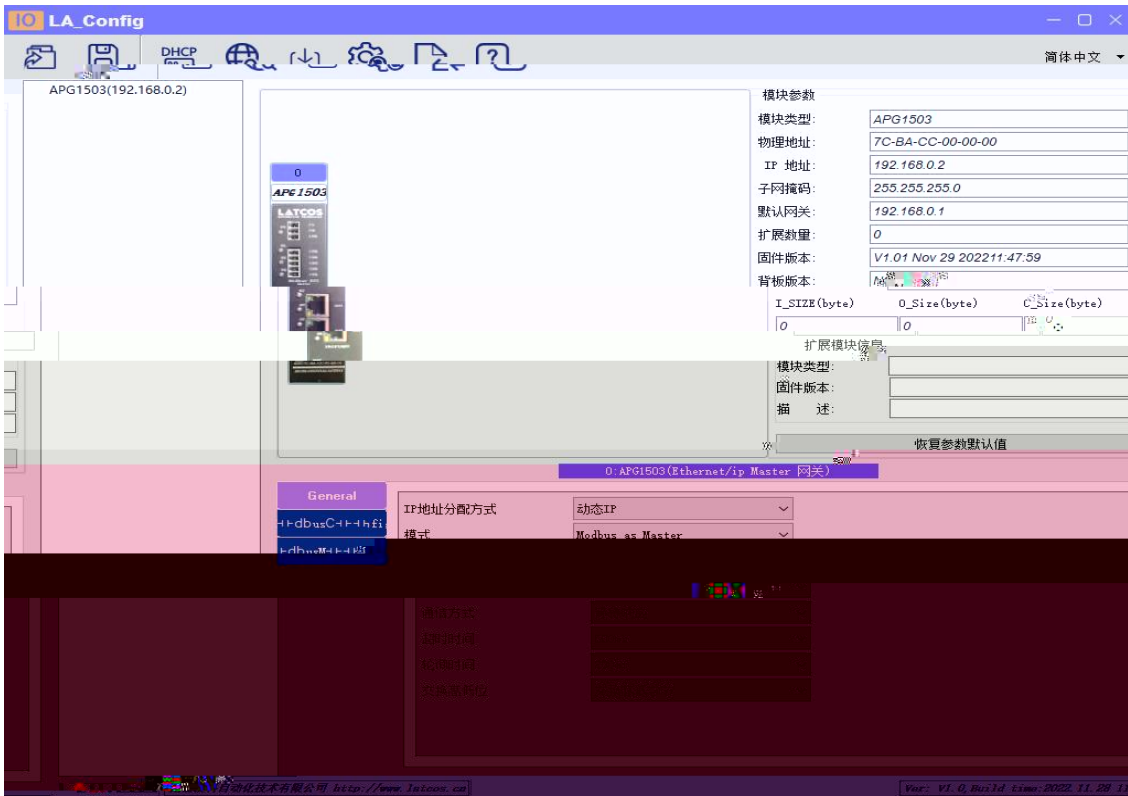
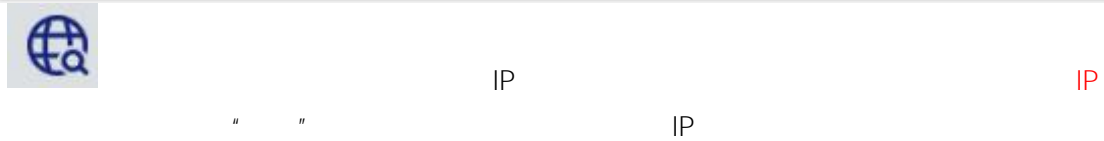
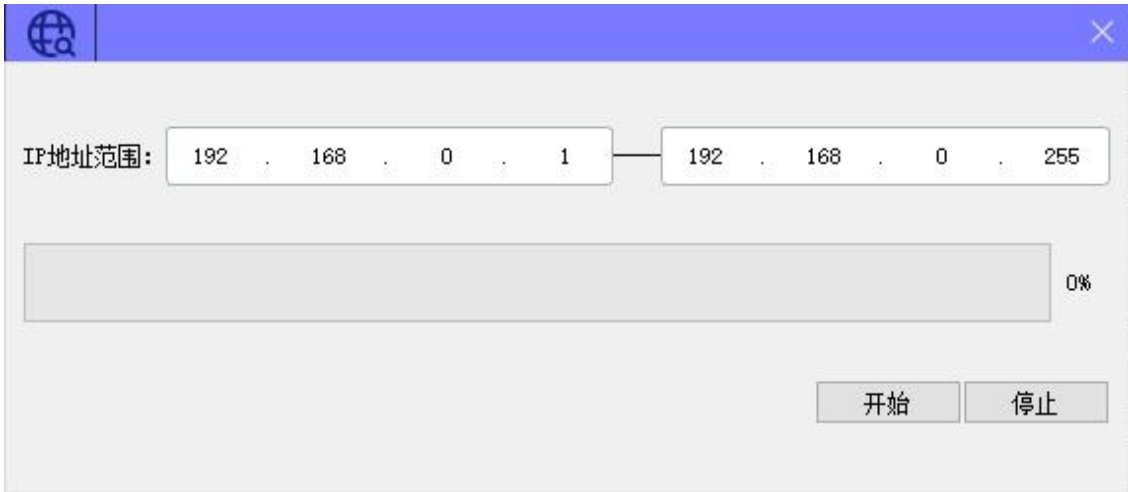
4.2.1

LAEConfig IP IP 192.168.0.x





4.2.2



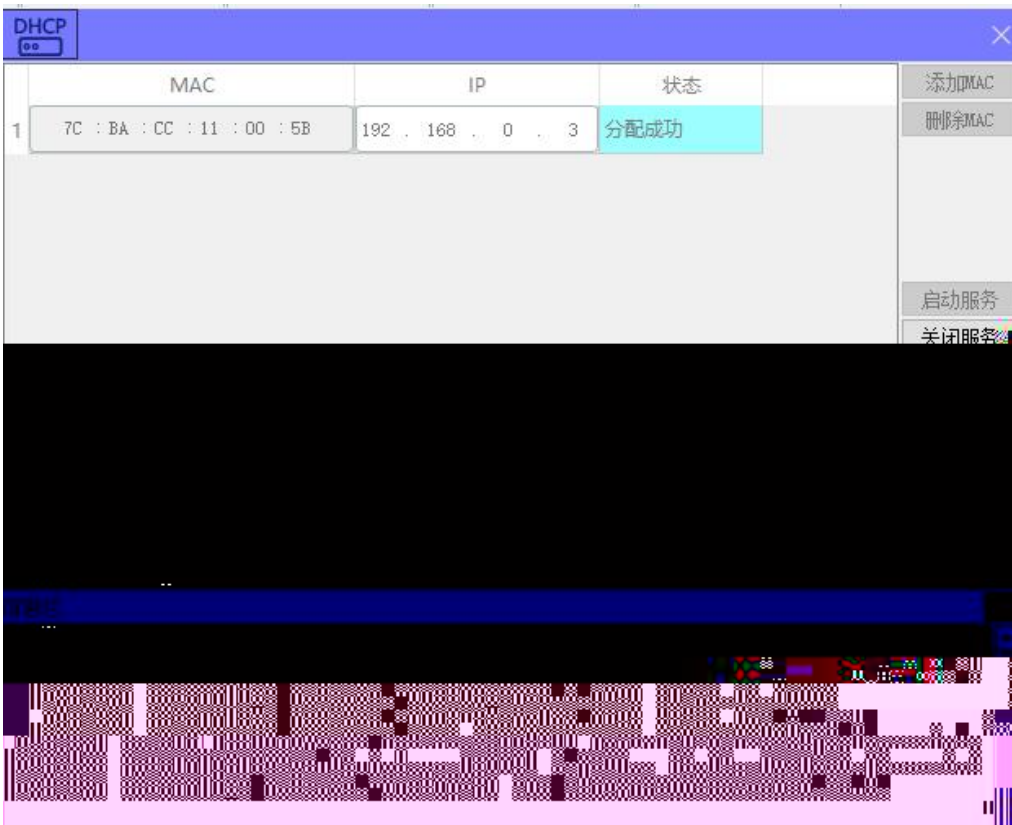
4.2.3 IP

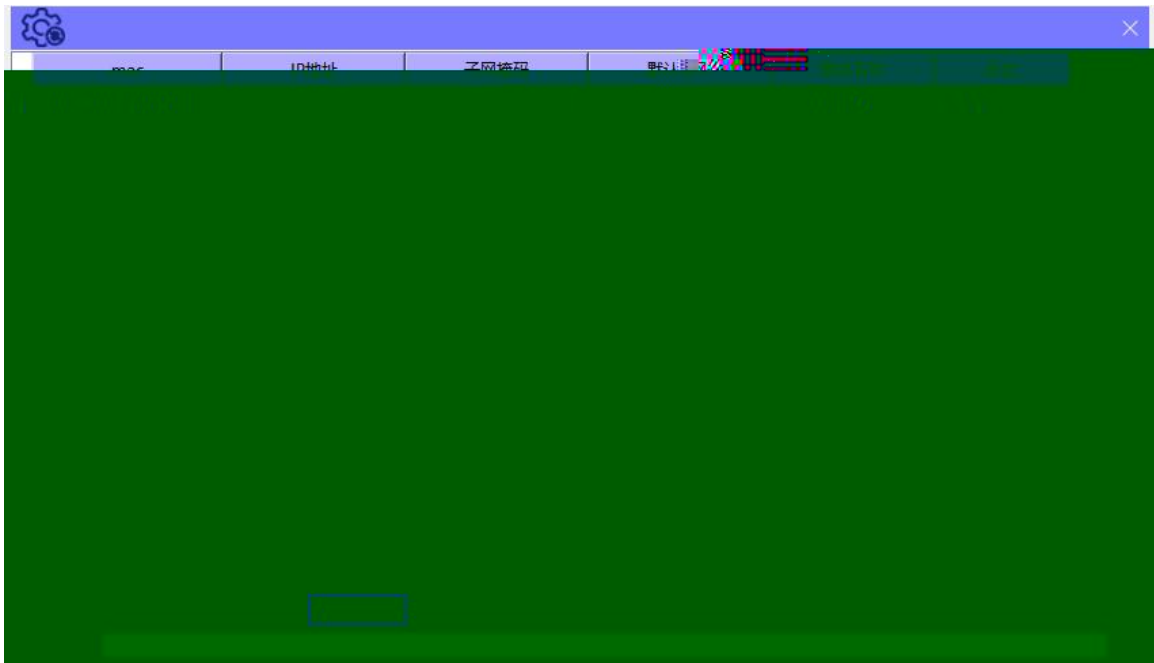
1

"IP" "IP"



DHCPService " MAC" " MAC"
MAC IP " "

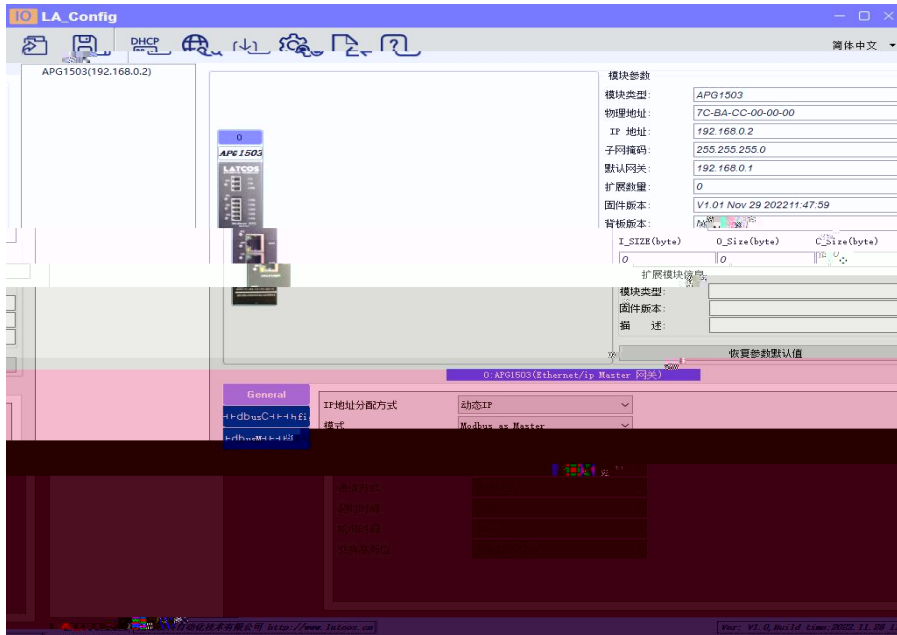




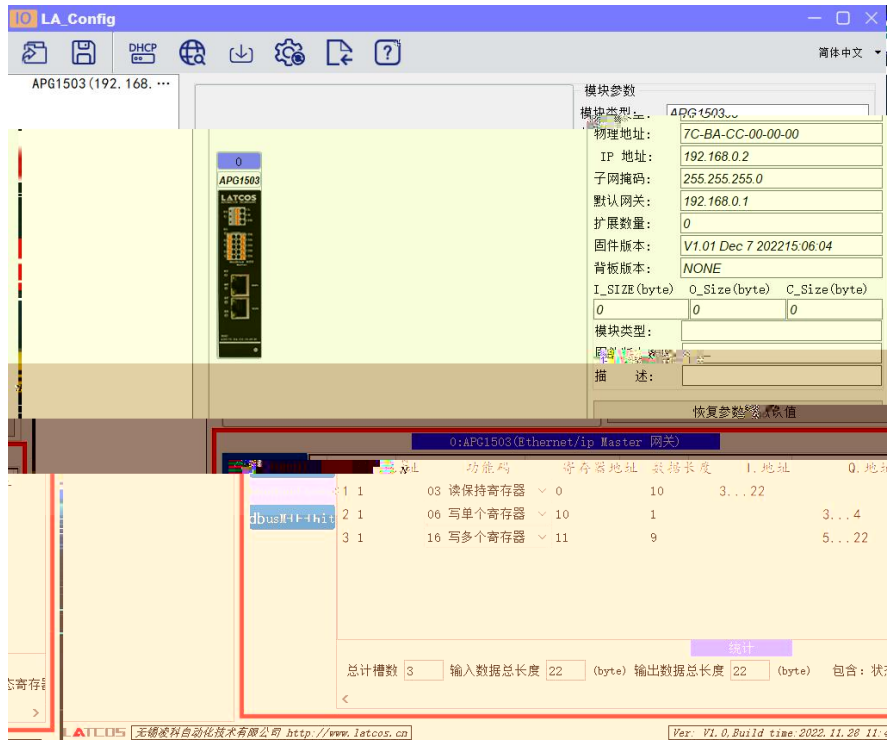
IP “ IP” IP

4.2.4

1. MODBUS



2. MODBUS



3 10 16 10 16

2 +20 modbus 22

2 +20 modbus 22



5.

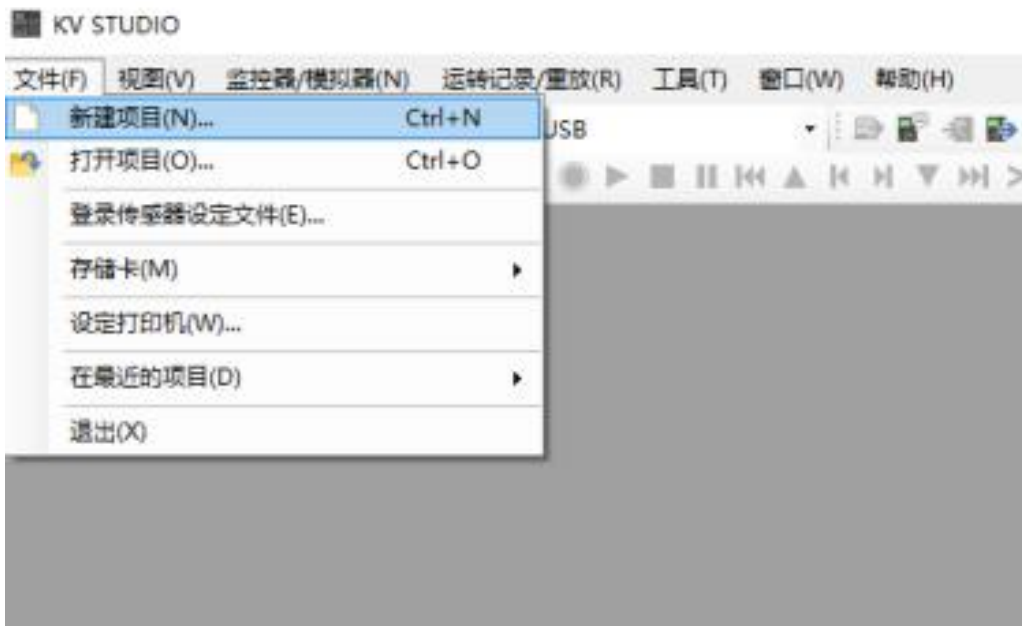
APG1503 PLC(KV8000) KV STUDIO

5.1

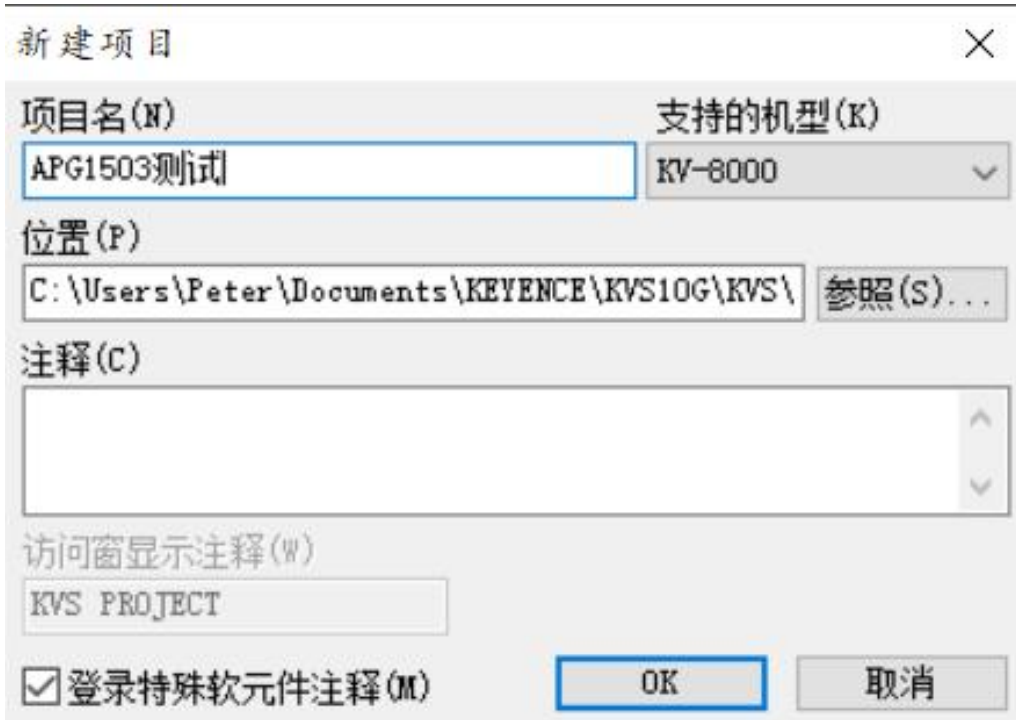
5.2

KV STUDIO

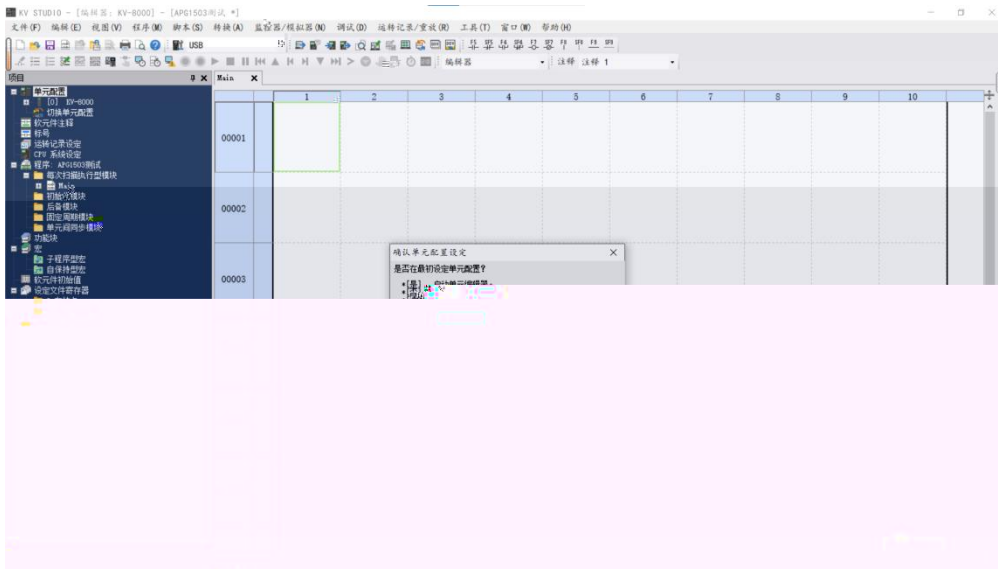
" " " "



PLC

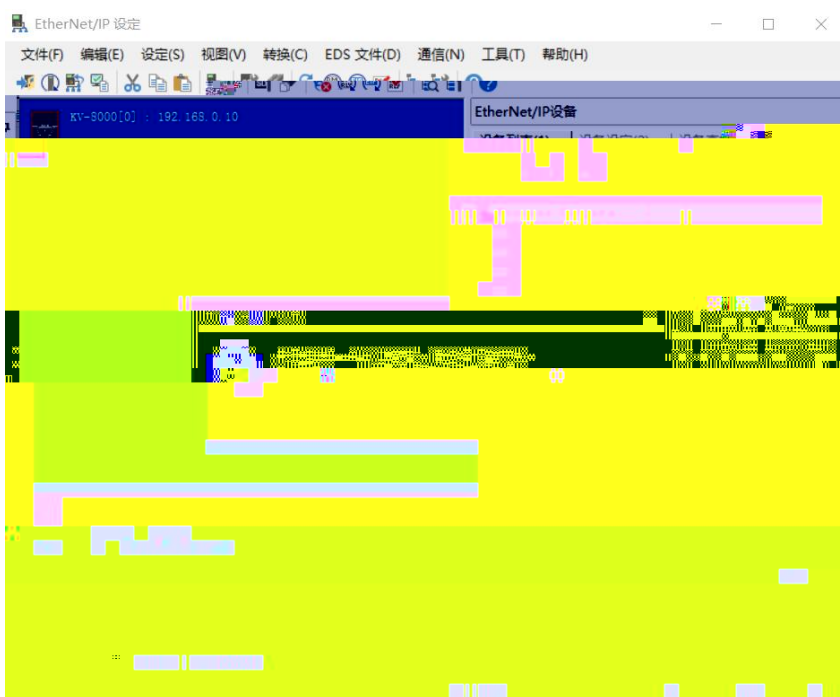
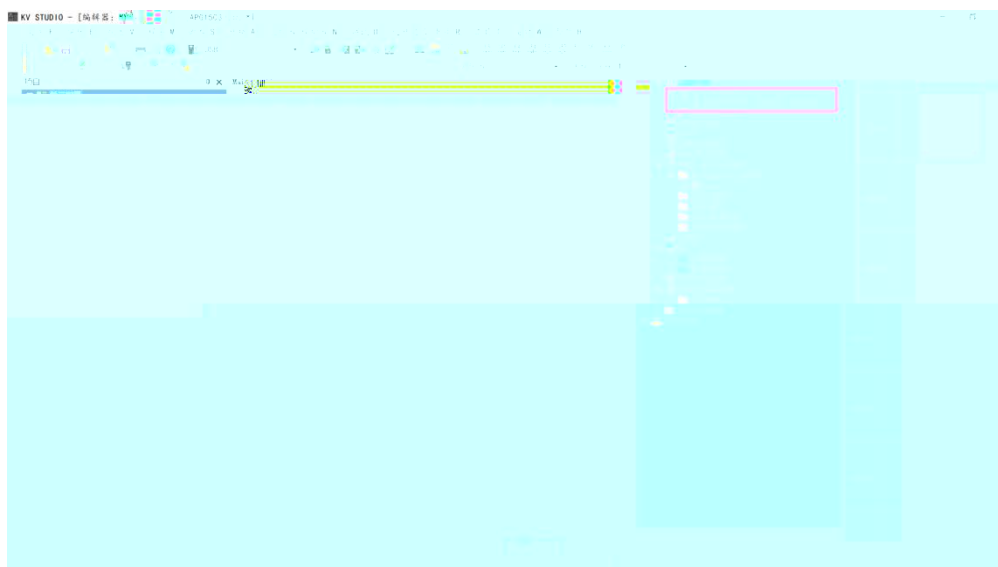


5.3 EtherNet/IP



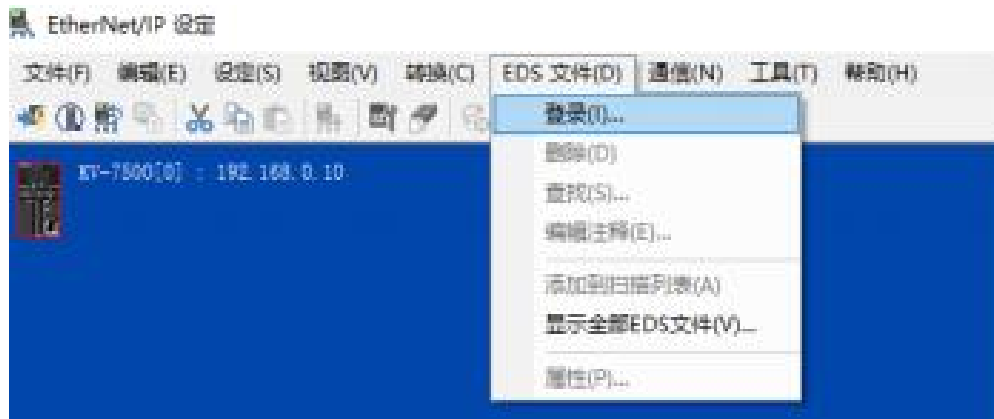
PLC

EtherNet/IP



5.4 EDS

“EtherNet/IP” “EDS” “ ” “ ”



EDS

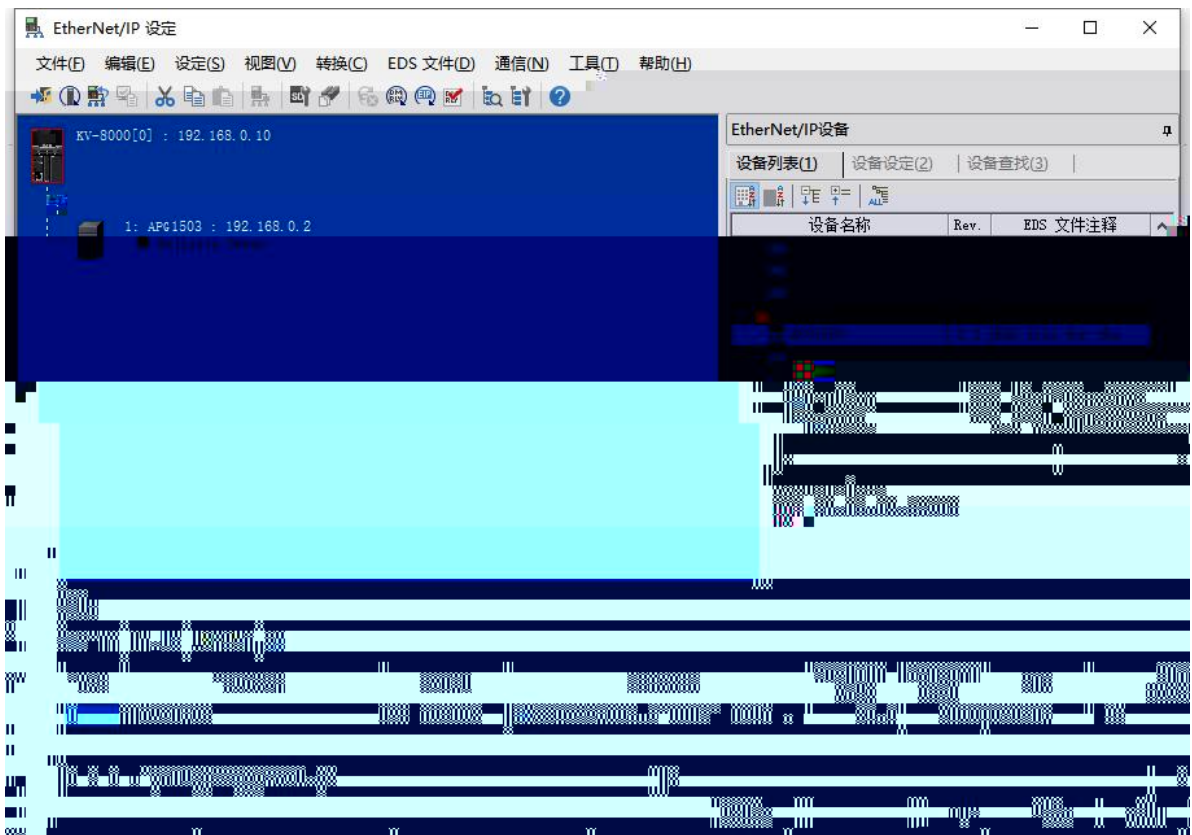
EDS



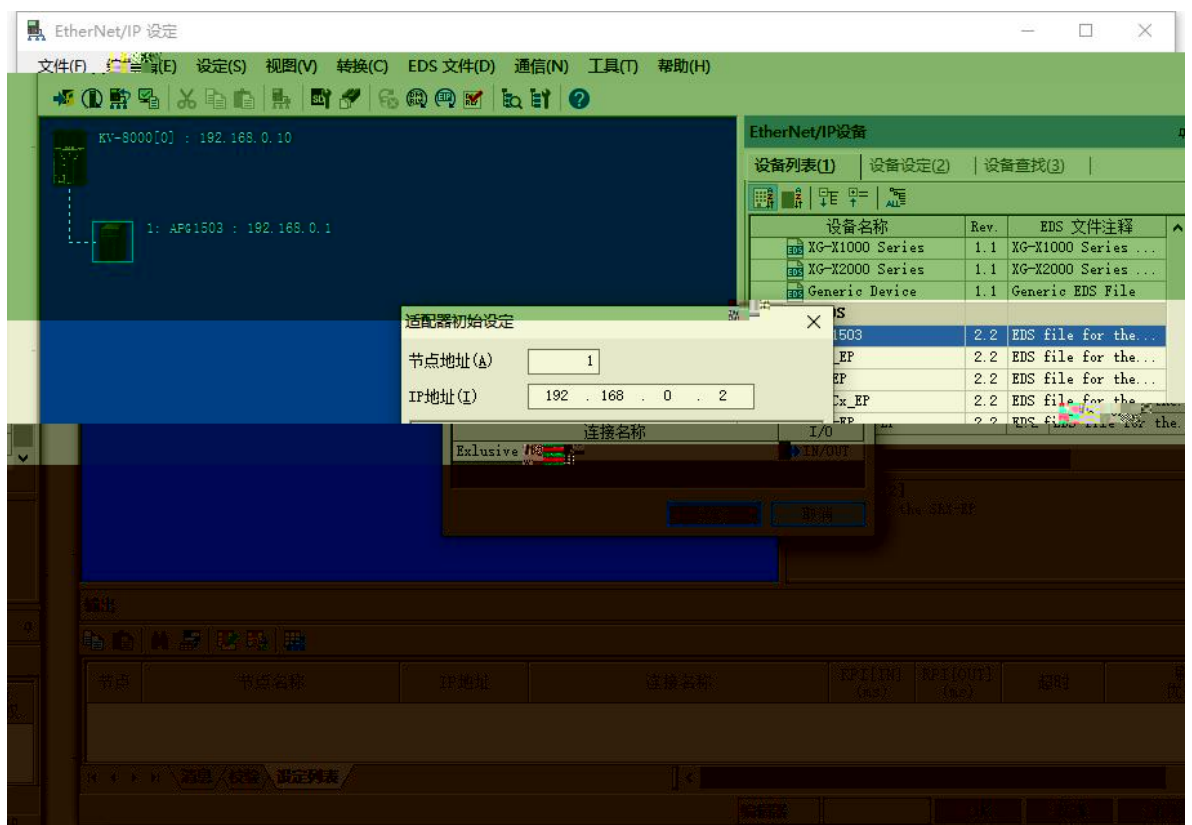
5.5

EtherNET/IP

"APG 1503"



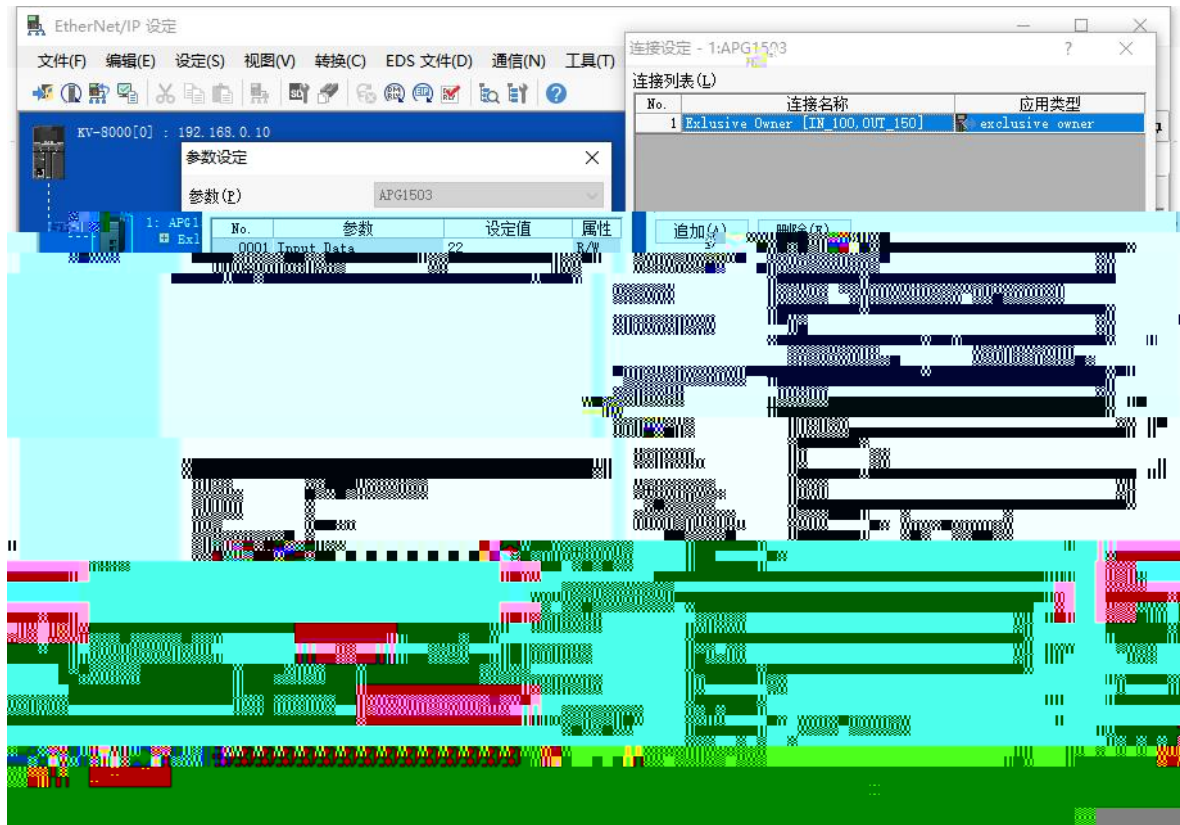
IP



"Exclusive Owner"



" "



a, Exclusive Owner

b,

c, RPI 5-30

Input Data Output Data 1 = 8

Ge-herQ1	从机地址	功能码	寄存器地址	数据长度	I. 地址	Q. 地址
ModbusConfig	1	03 读保持寄存器	0	10	3... 22	
dbusM+H+Hit	2	06 写单个寄存器	10	1		3... 4
	3	16 写多个寄存器	11	9		5... 22

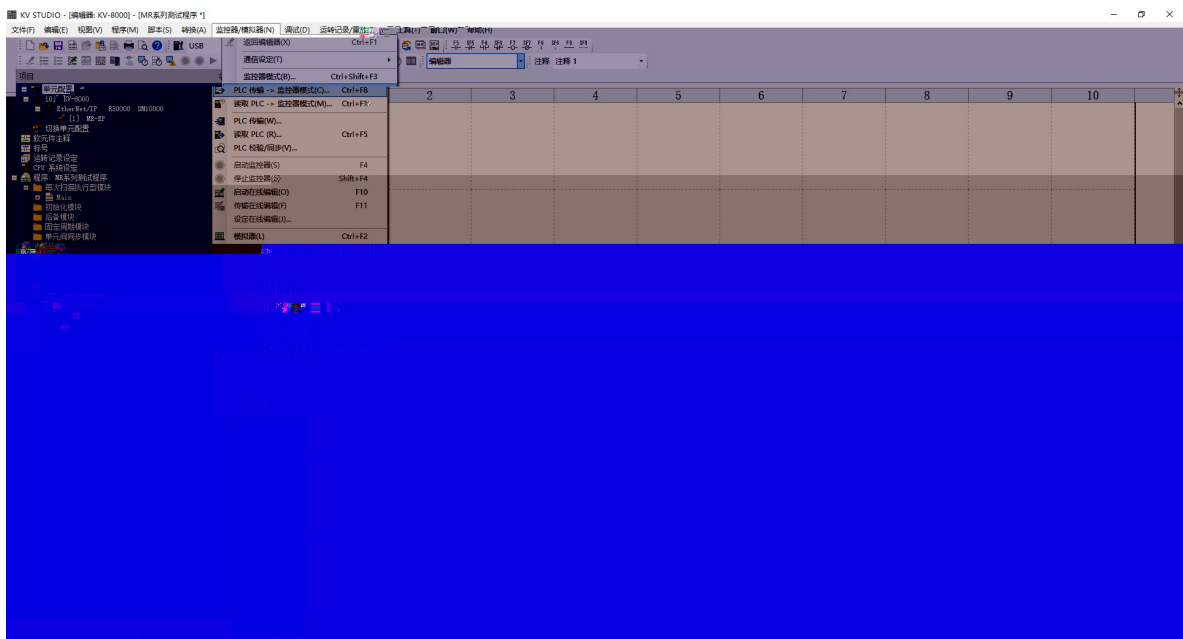
统计

总计槽数 输入数据总长度 (byte) 输出数据总长度 (byte) 包含: 状态寄存器

LA Econfig

PLC

plc



5.6

PLC

" " " "

6.

1.

windows

ping

IP

ping

ping

IP

IP

2

RUN

ERR

IP

IP

IP

