

透科自动化

Ethernet/IP R51CX-EP OMRON(NX/NJ



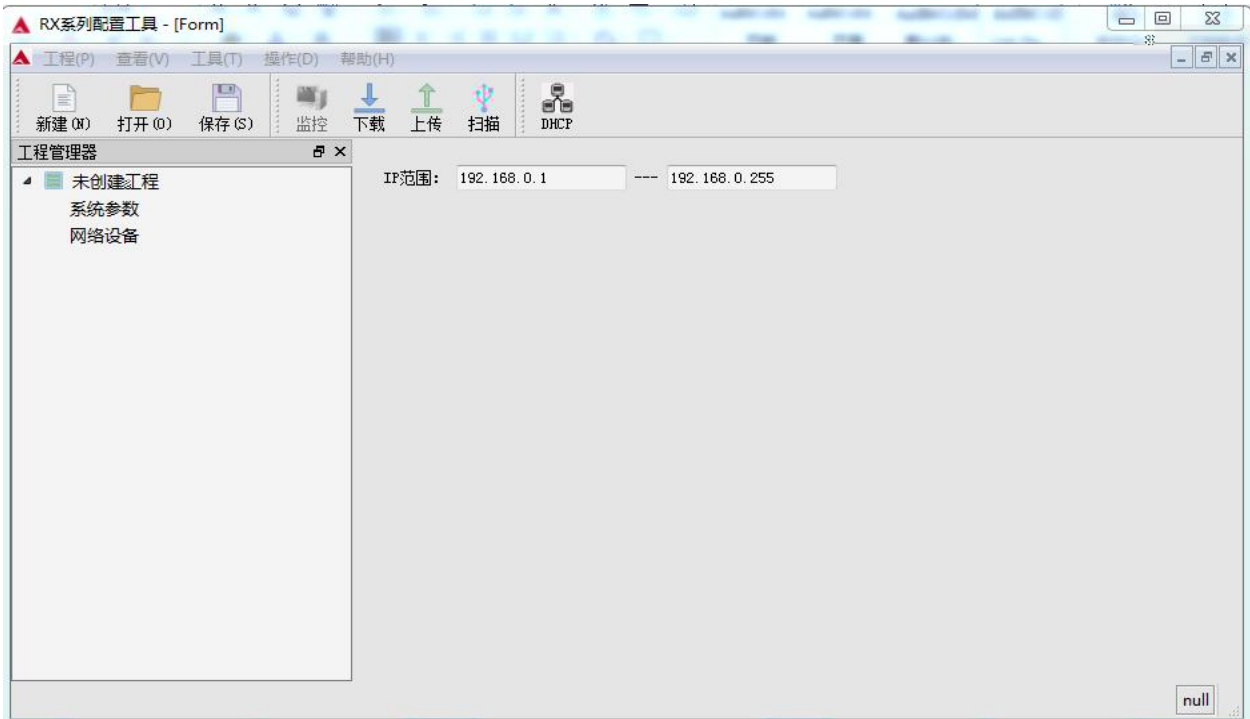
OMRON-NX/NJ PLC Ethernet/IP IO

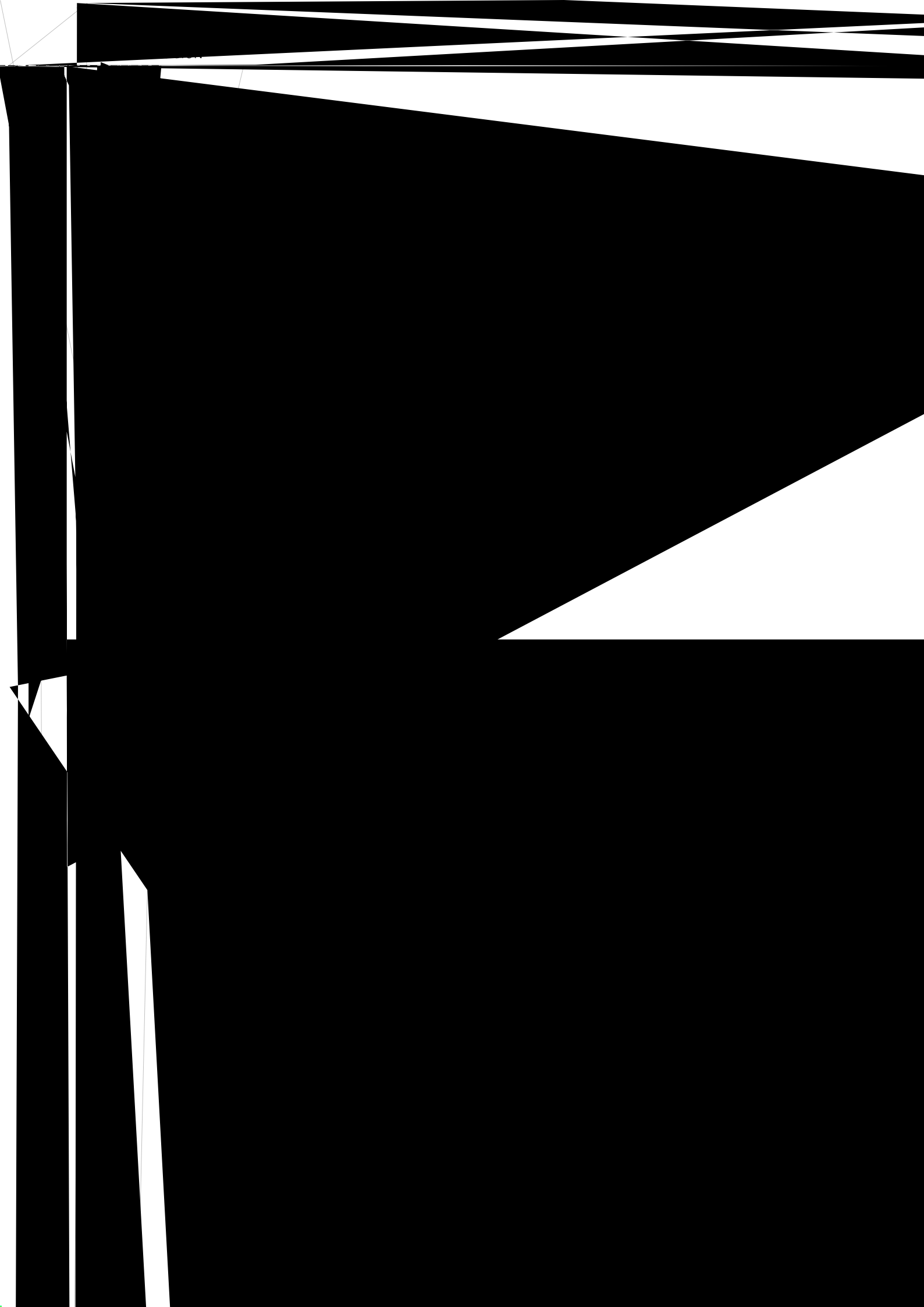
OMRON-NX/NJ PLC Ethernet/IP IO Sysmac Studio
IO .eds IO

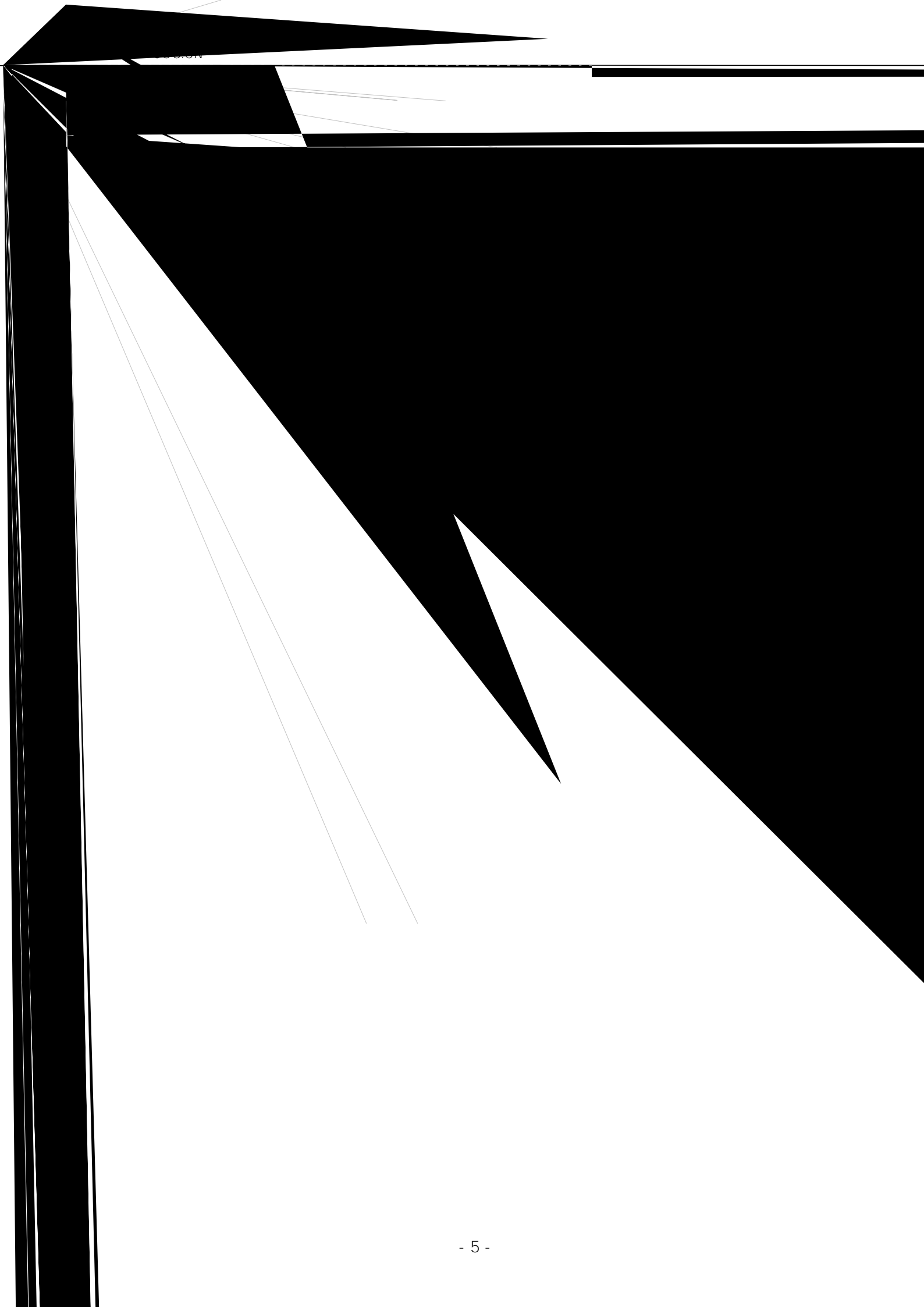
- OMRON Sysmac Studio
- IO R51C1_EPPRO.eds

1. PLC IO
2. PLC Ethernet IO

1. RxTool IP IP 192.168.0.X







NX1P2 9024DT V1.18 R51C1-EP

1.eds

R51C1_EPPRO.eds

C:\Program Files (x86)\OMRON\Sysmac Studio\IO DeviceProfiles\Eip

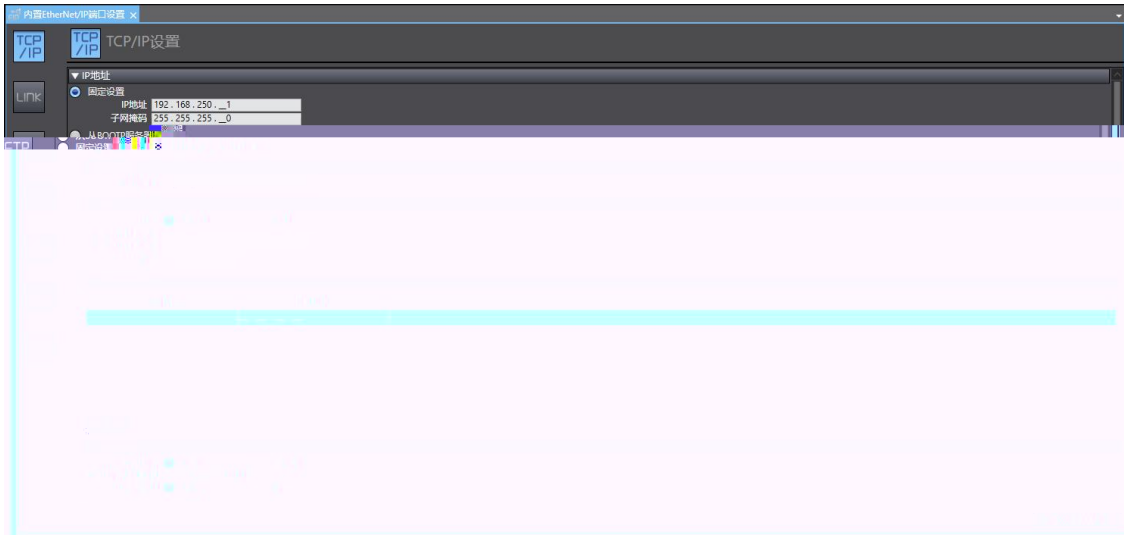
Connection\Eds

2.Sysmac Studio

PLC

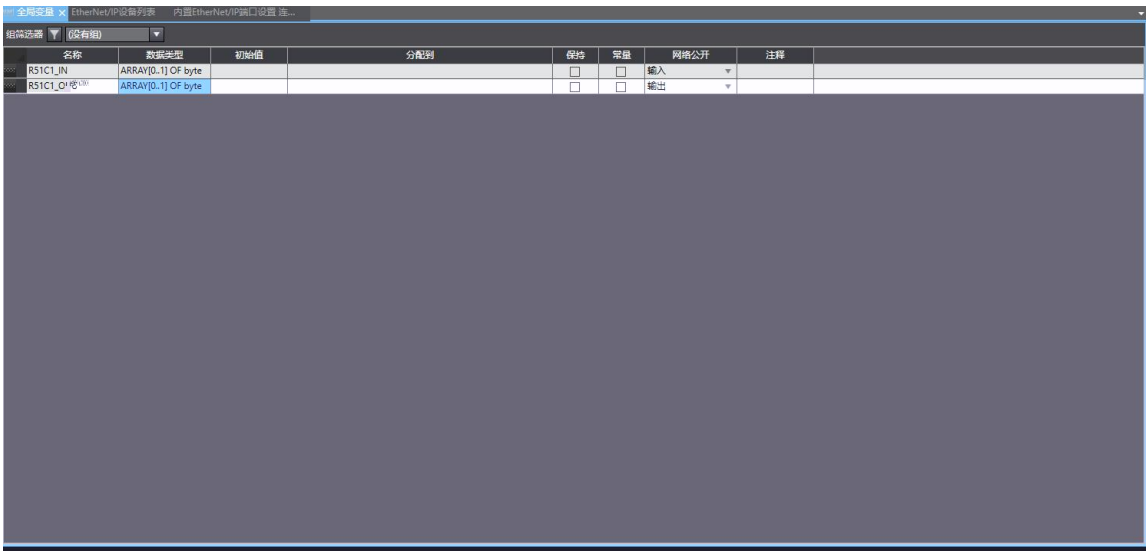


" EtherNet/IP "



IP

3. PLC

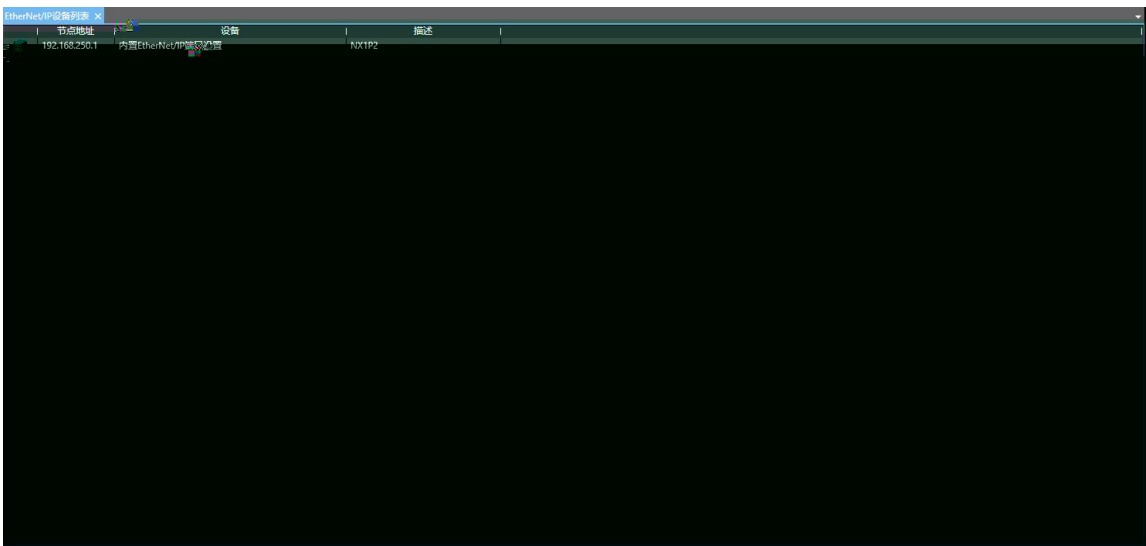


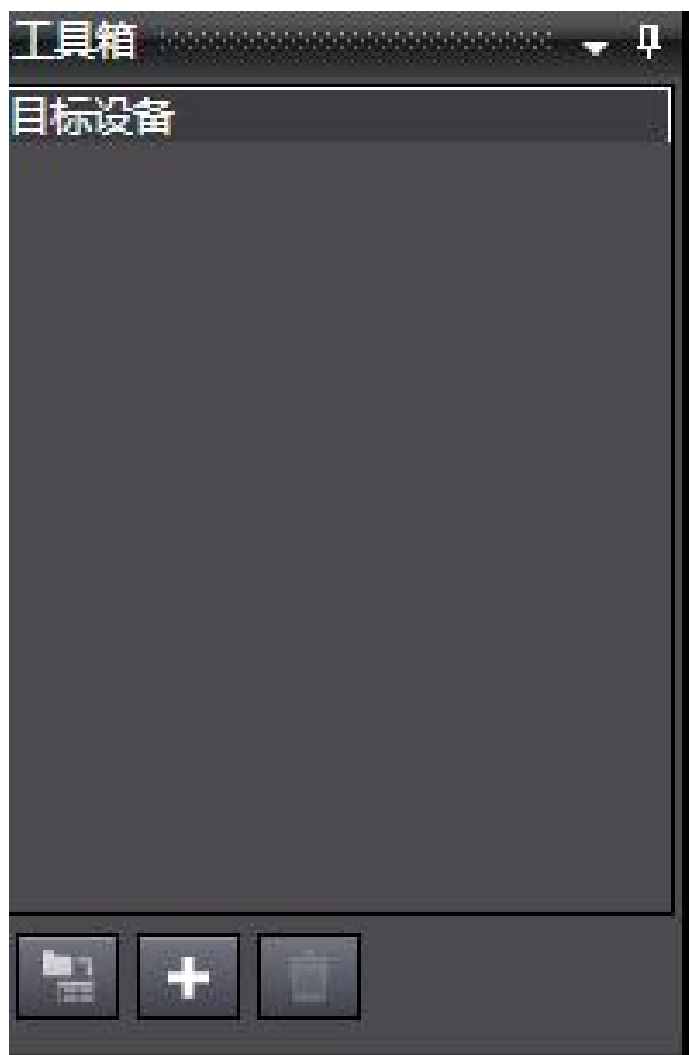
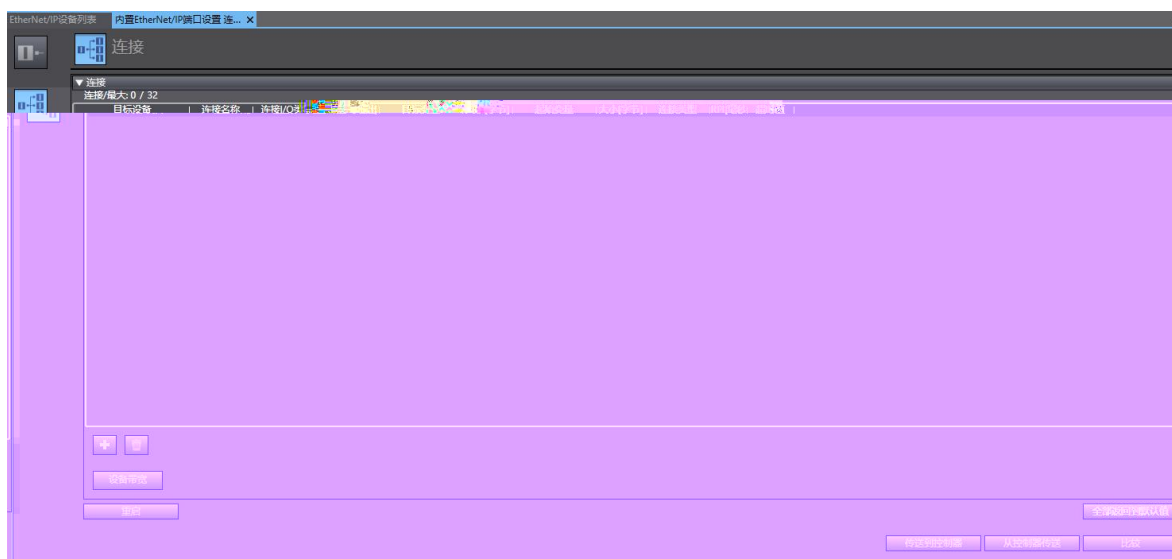
EIP

Byte

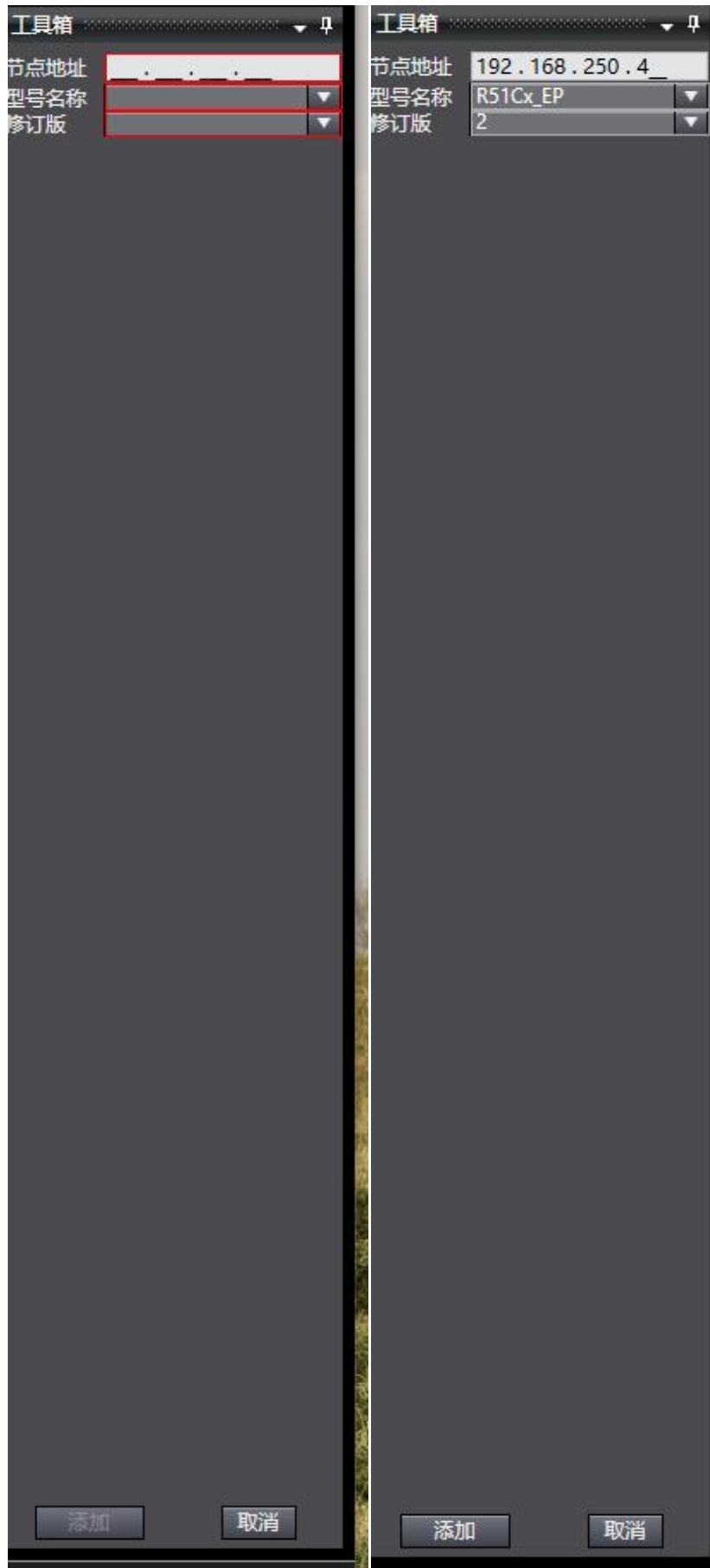
4.EIP

"EtherNet/IP"



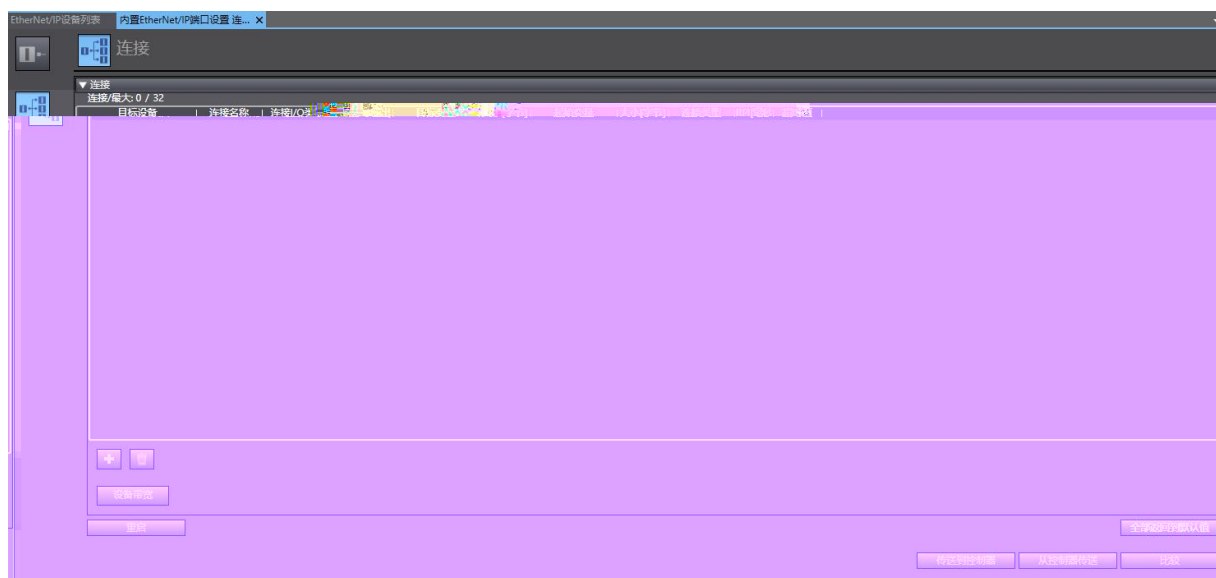


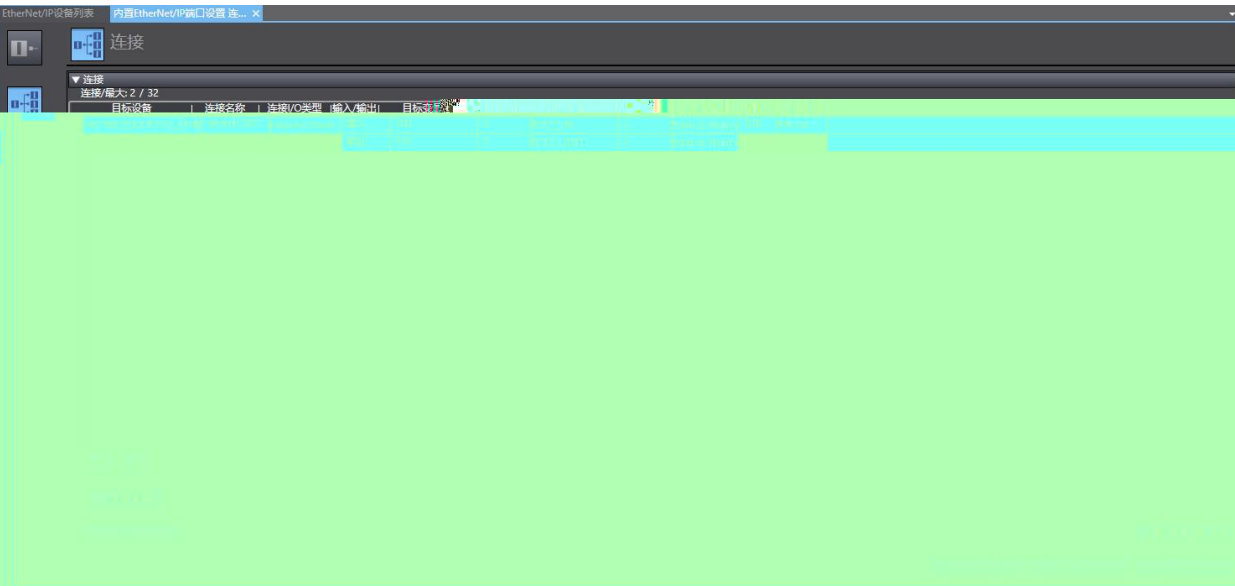
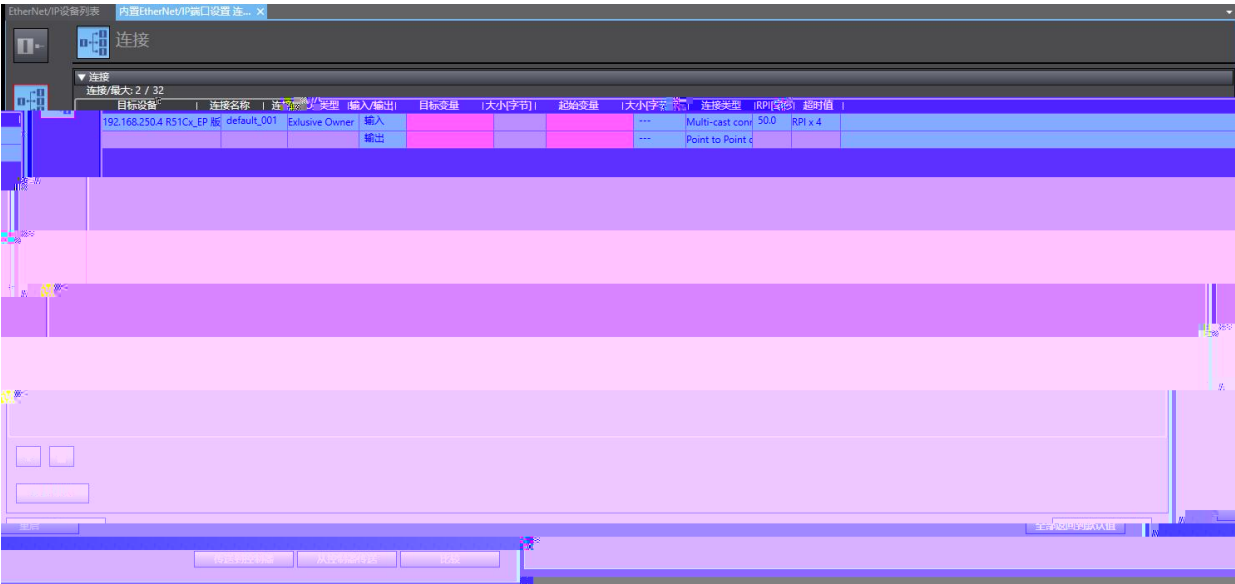
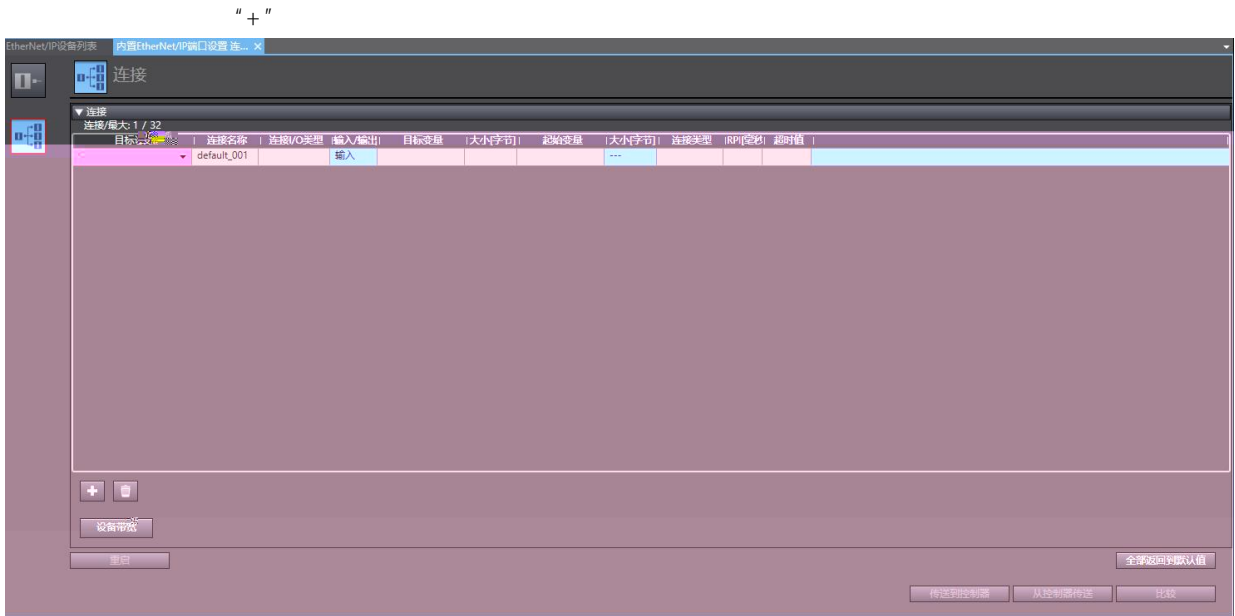
" + "

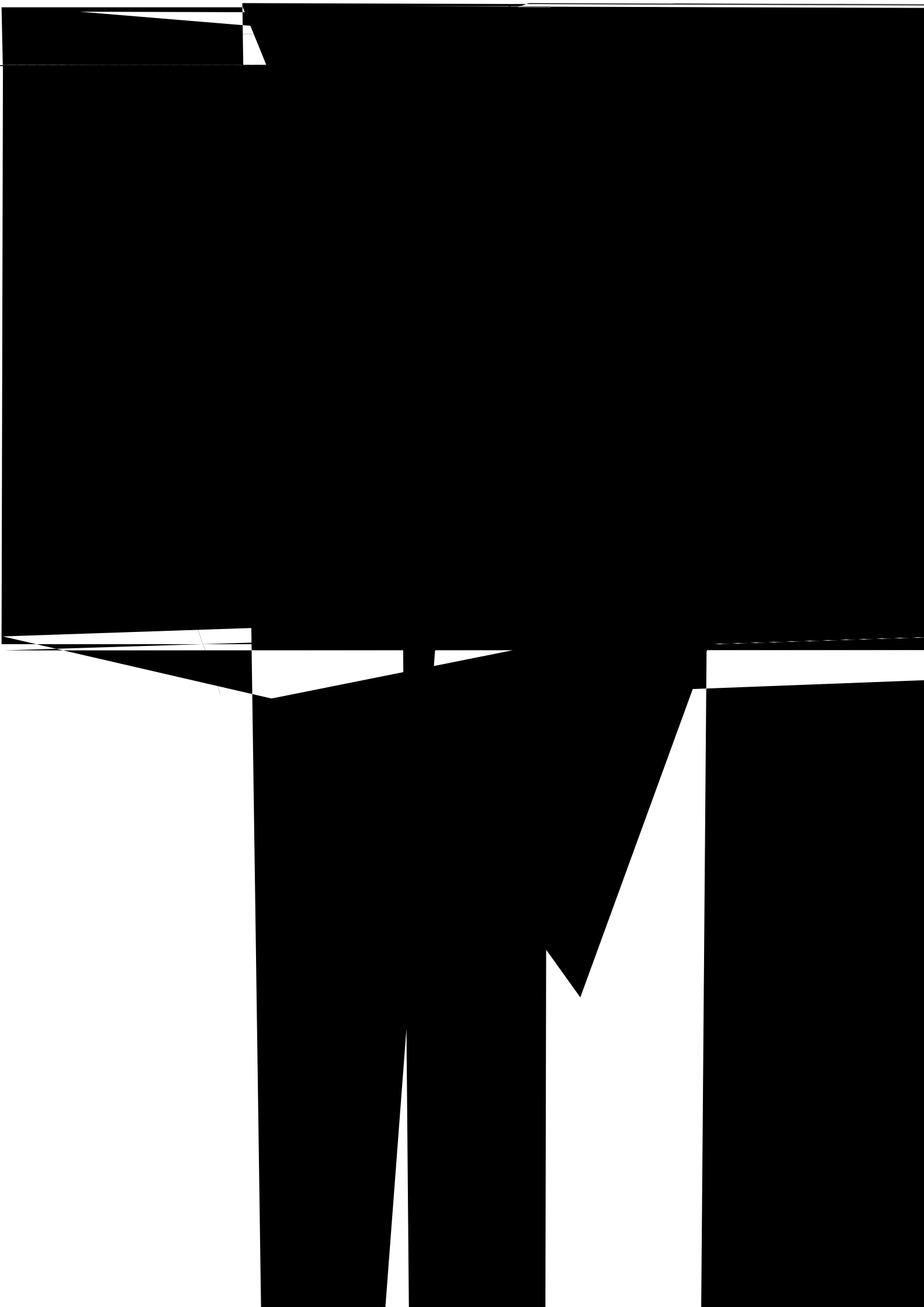


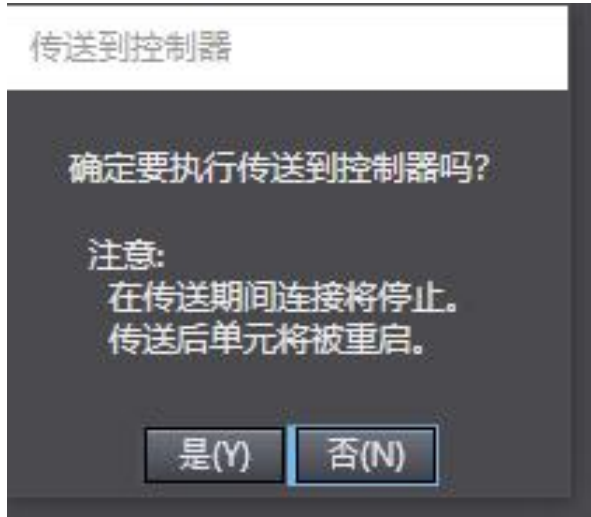


" "









“ ”

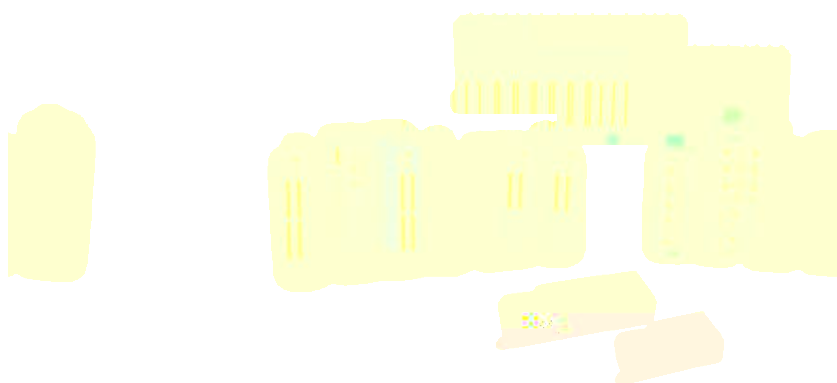


设备名称	名称	在线值	修改	注释	数据类型	分配到
new_Controller_0	RS1C1_OUT[0]	FF			byte	
new_Controller_0	RS1C1_OUT[1]	FF			byte	
new_Controller_0	RS1C1_IN[0]	02			byte	
new_Controller_0	RS1C1_IN[1]	00			byte	
new_Controller_0	输入名称					



读科自读
LATCOS

www.latcos.cn



www.latcos.cn