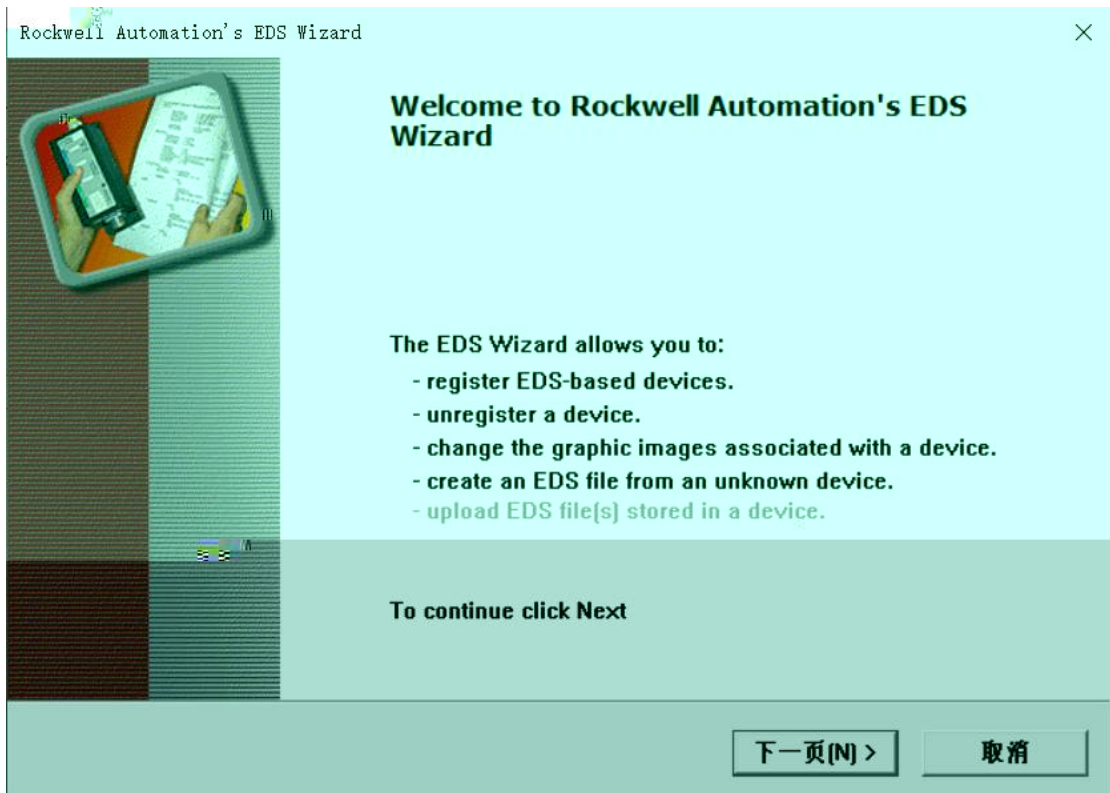
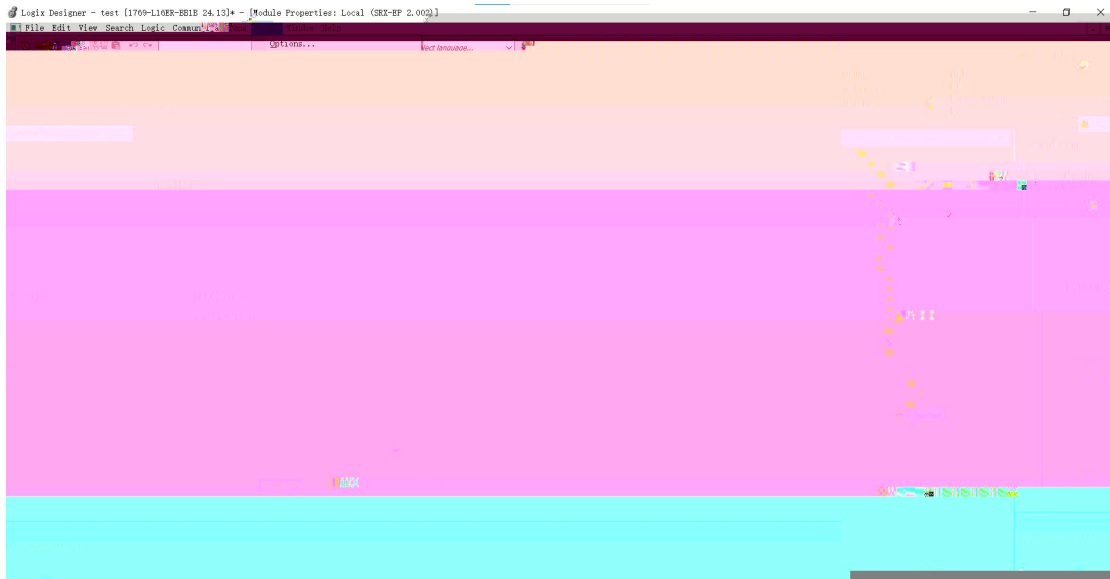


凌科自动化

GLATD





Options

What task do you want to complete?



Register an EDS file(s).
This option will add a device(s) to our database.



Unregister a device.
This option will remove a device that has been registered by an EDS file from our database.



Create an EDS file.
This option creates a new EDS file that allows our software to recognize your device.

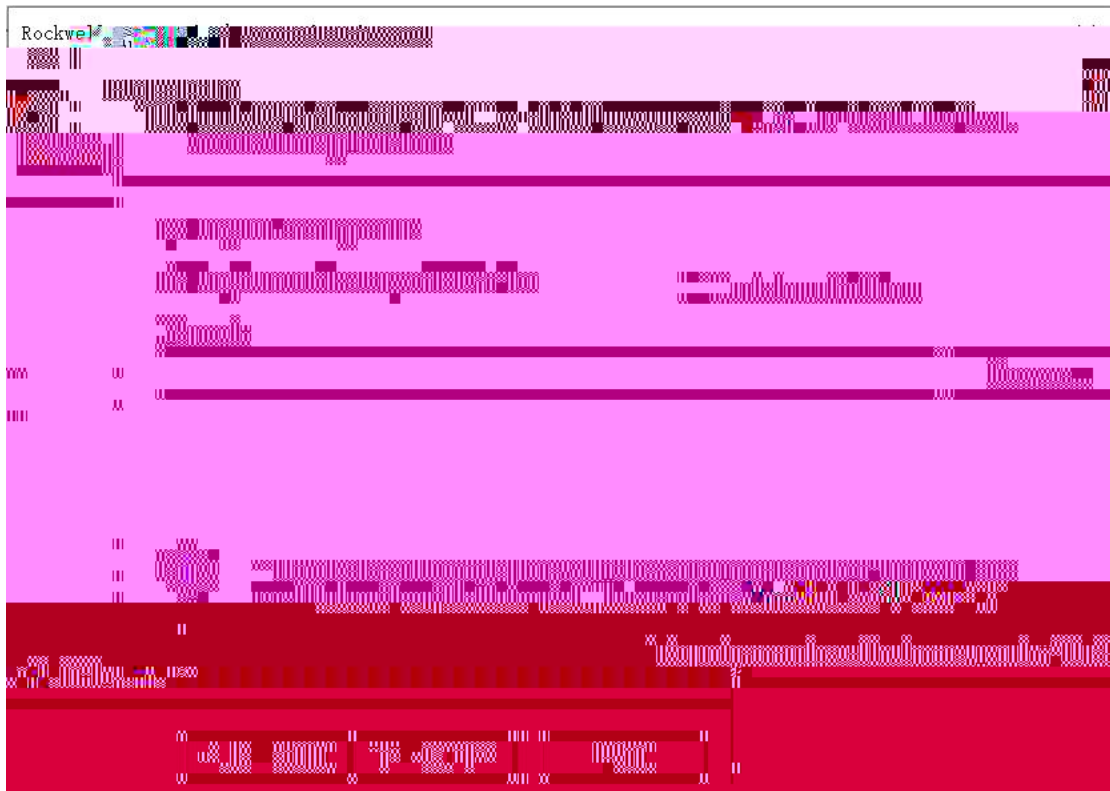


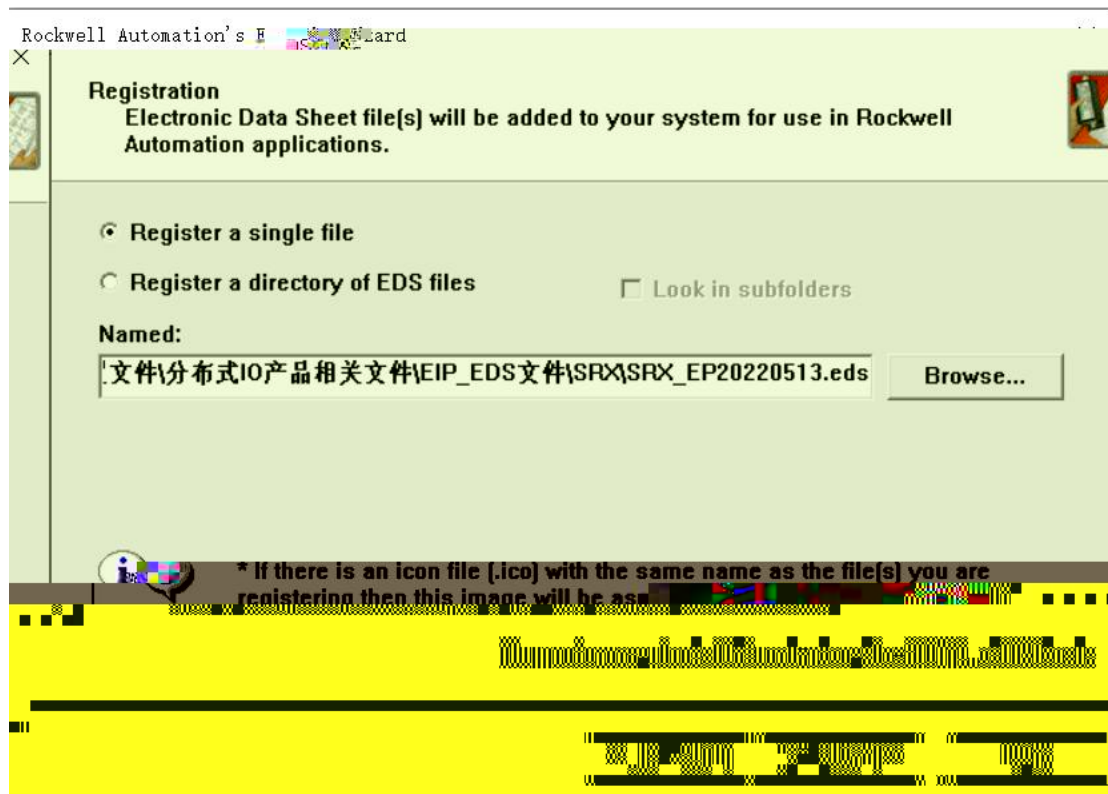
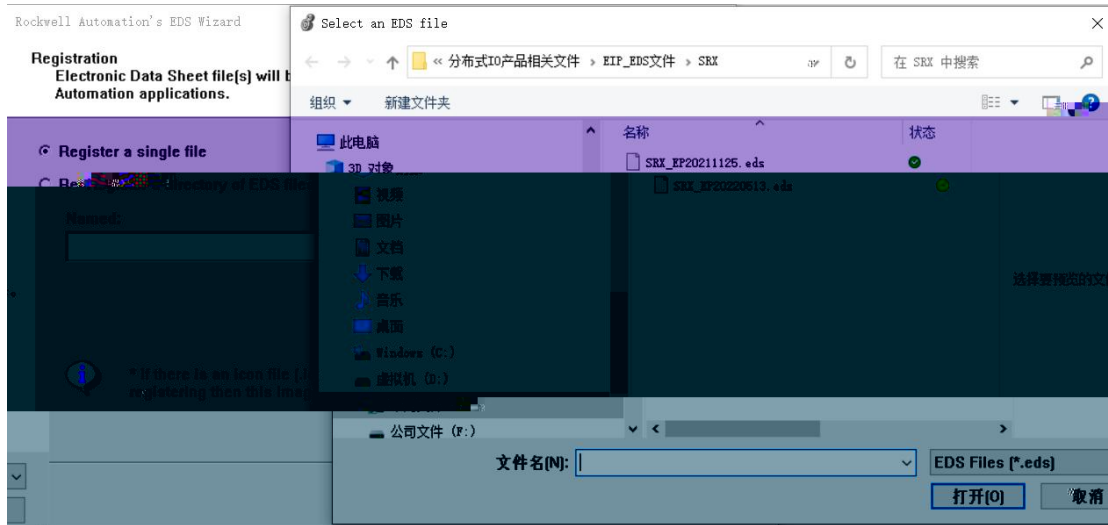
Upload EDS files from the device.
This option uploads and registers the EDS file(s) stored in the device.

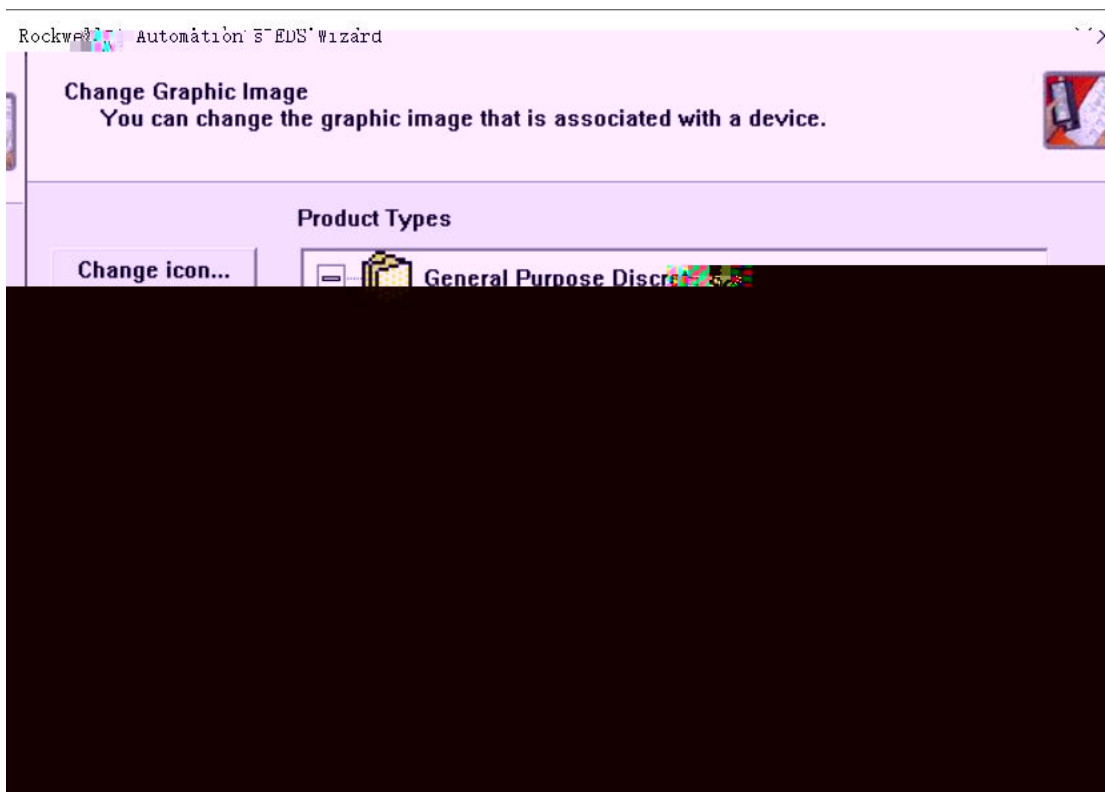
< 上一步(B)

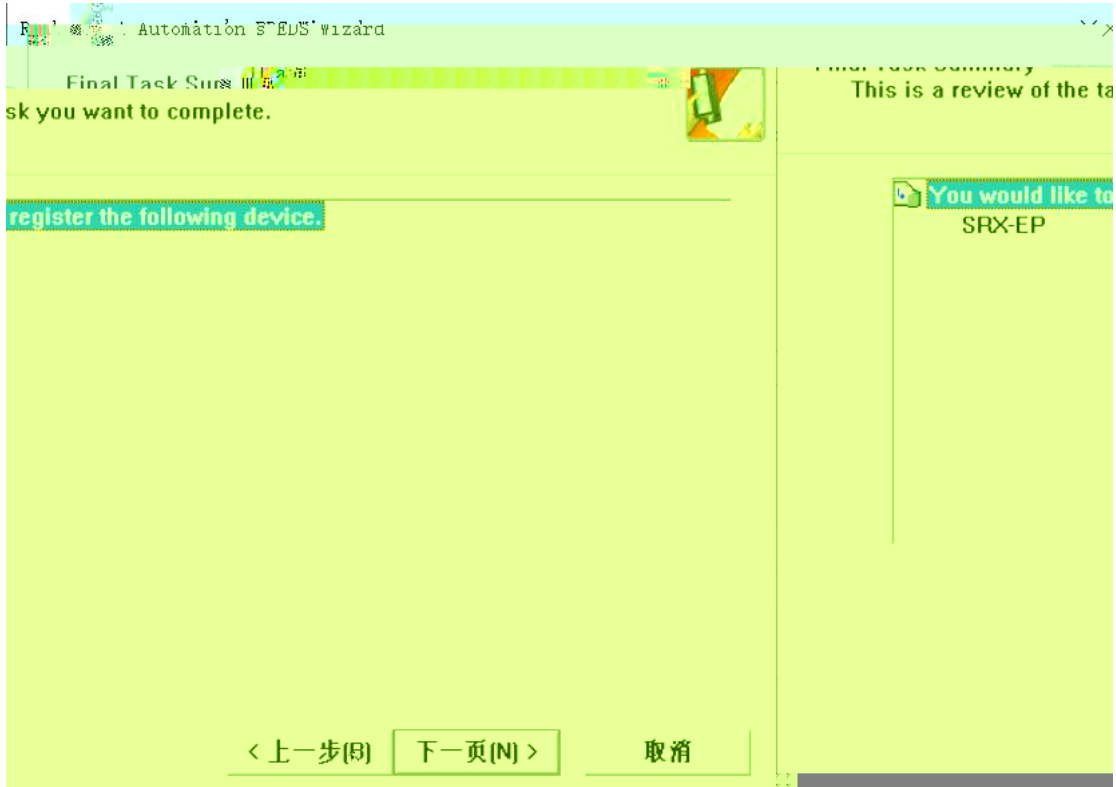
下一页(N) >

取消







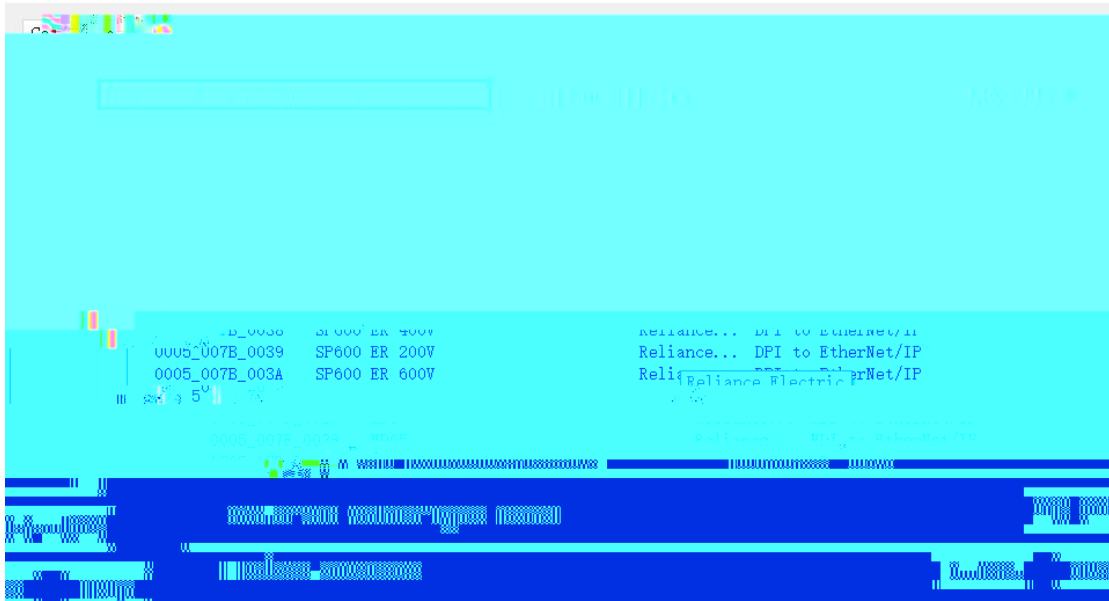


Rockwell Automation's EDS Wizard

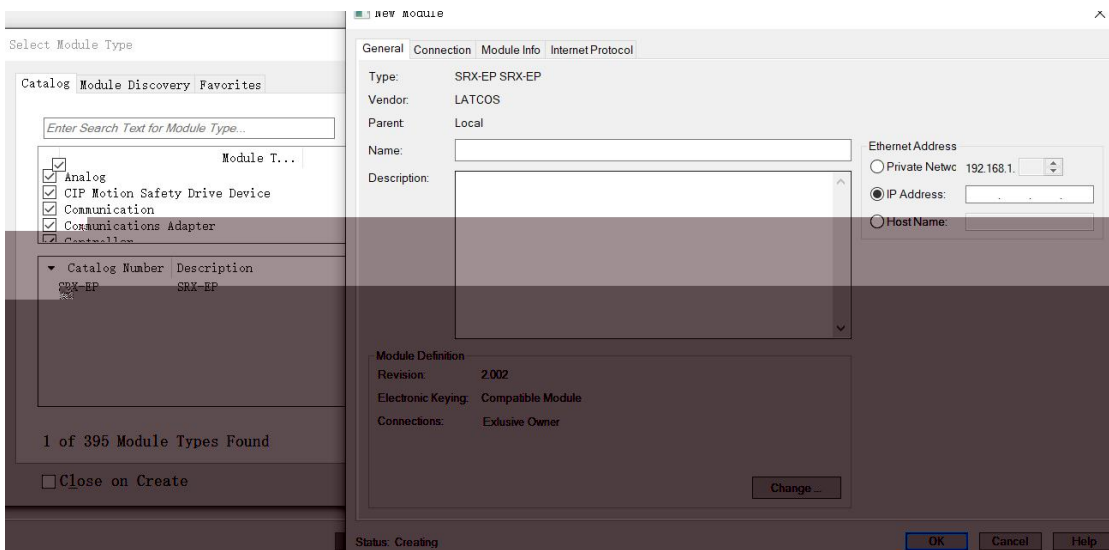
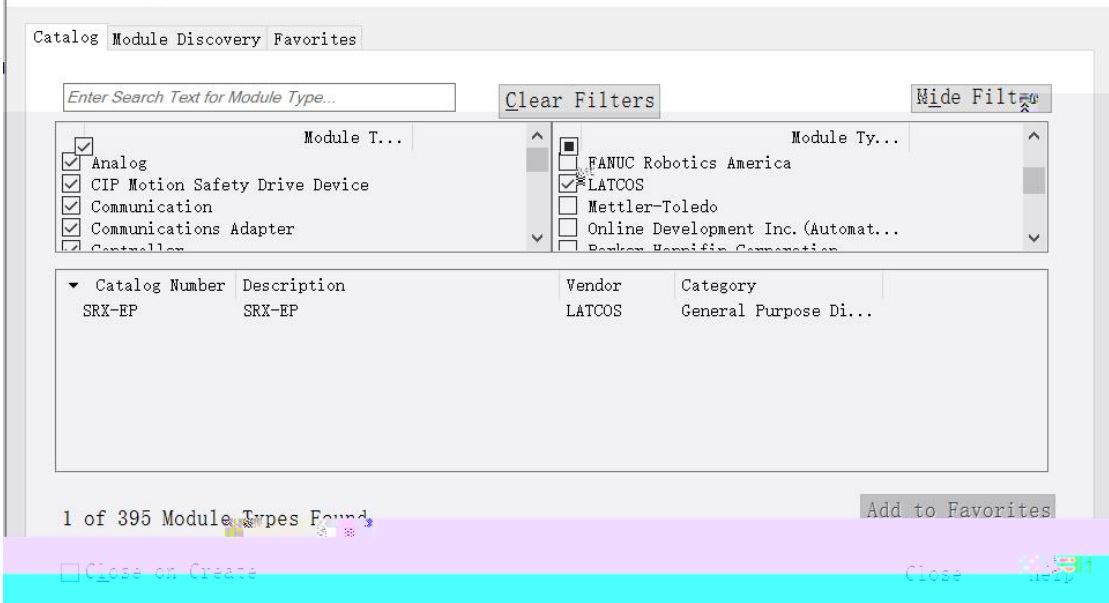


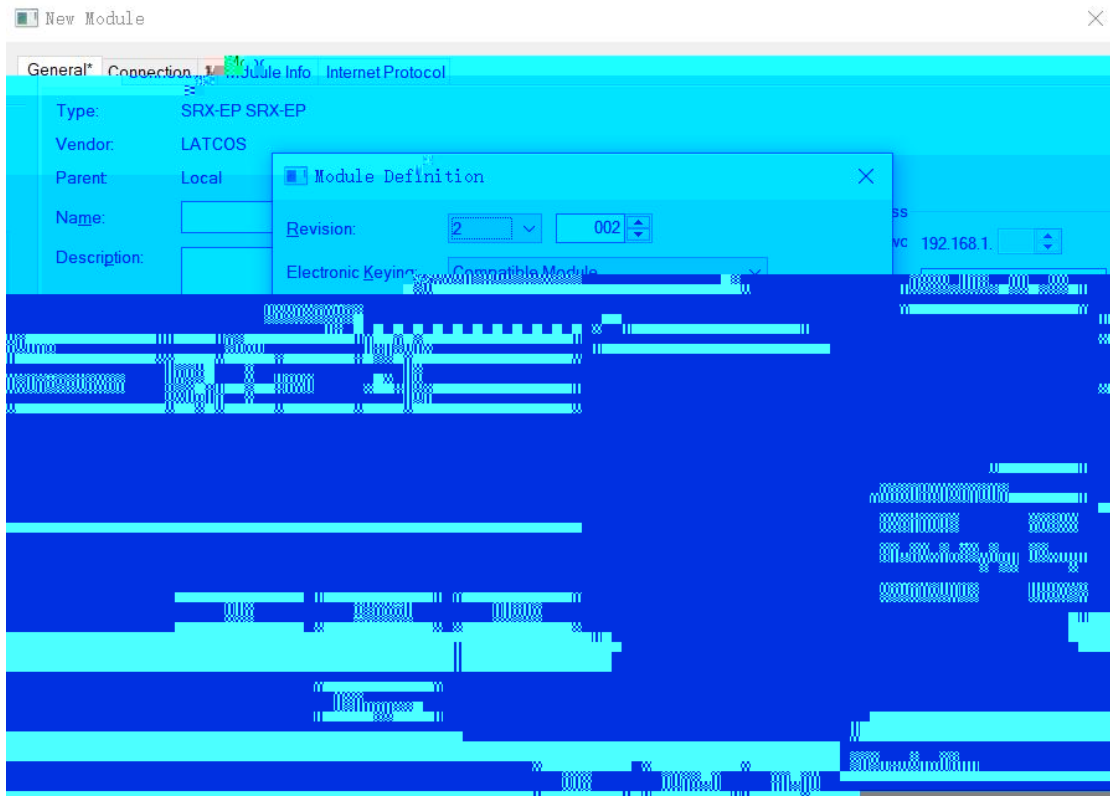
You have successfully completed the EDS Wizard.

Select Module Type



Select Module Type







技科自研
LATCOS

04.01.01.01



04.01.01.02



www.latcos.cn