

透科自动化

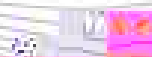
MR

KV 7500

ethernetip)

Ethernet/IP SRX

KV7500



2023-3-23

2023 03 23

20223 03 23

1.

KV STUDIO Ver.10G

2.

KV7500	Ethernet/IP	IO	KV STUDIO Ver.10G
IO	.eds	IO	

3.

- KV STUDIO Ver.10G
- IO SRX_EP20201126.eds

4.

4.1

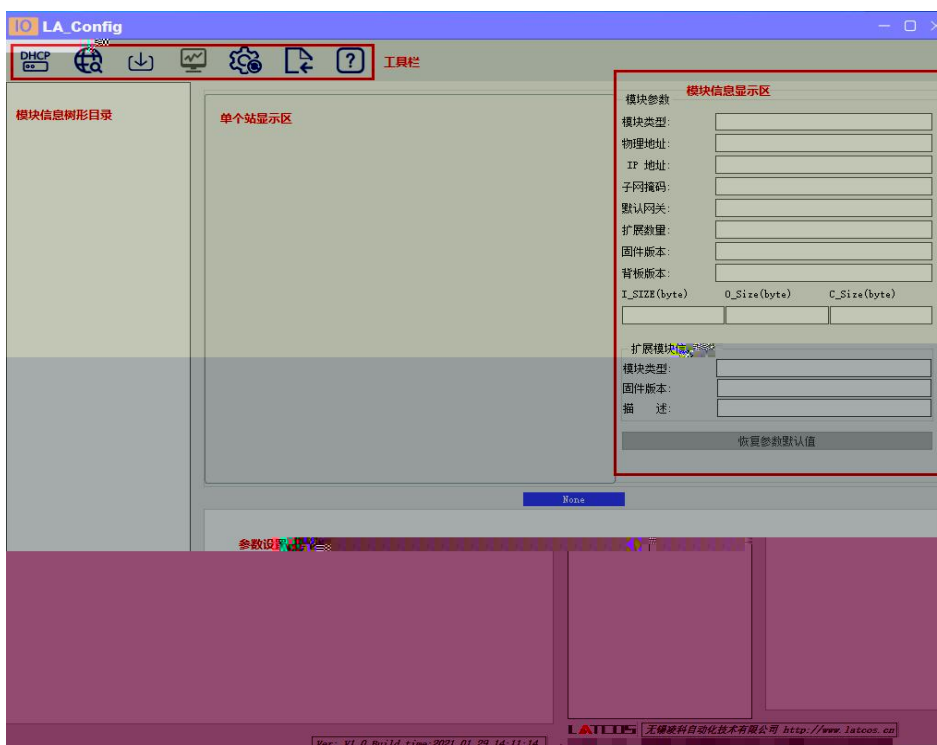
- 1. KV7500 IO
- 2. PLC Ethernet IO

4.2

IP

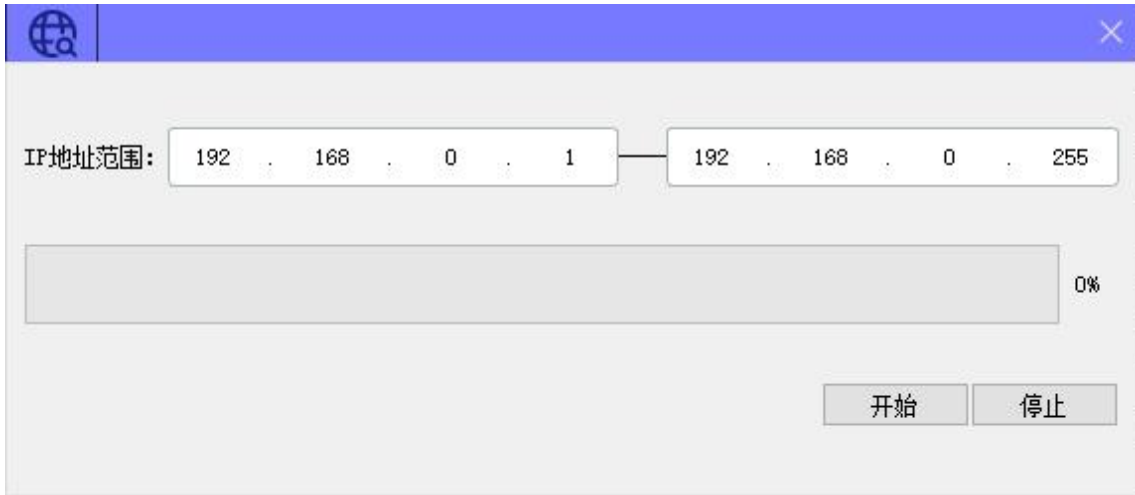
4.2.1

LAEConfig	IP	IP 192.168.0.x
-----------	----	----------------





4.2.2

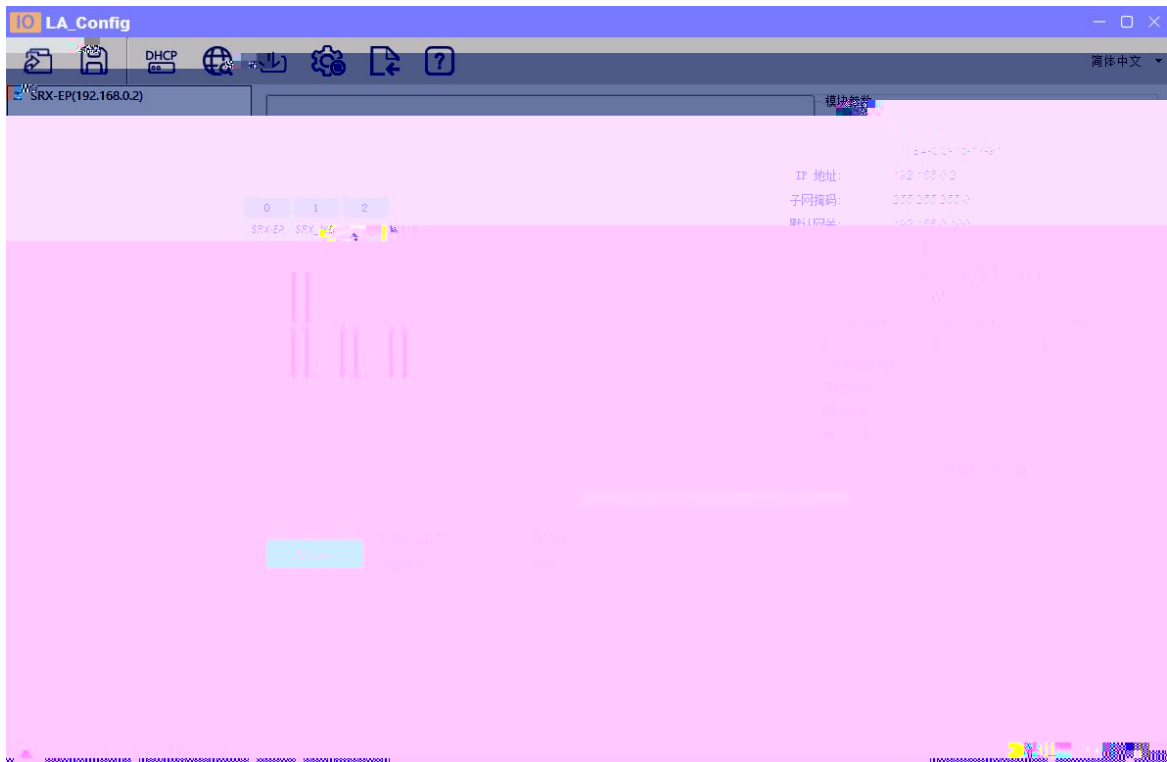


IP

IP

“ ”

IP





DHCPService

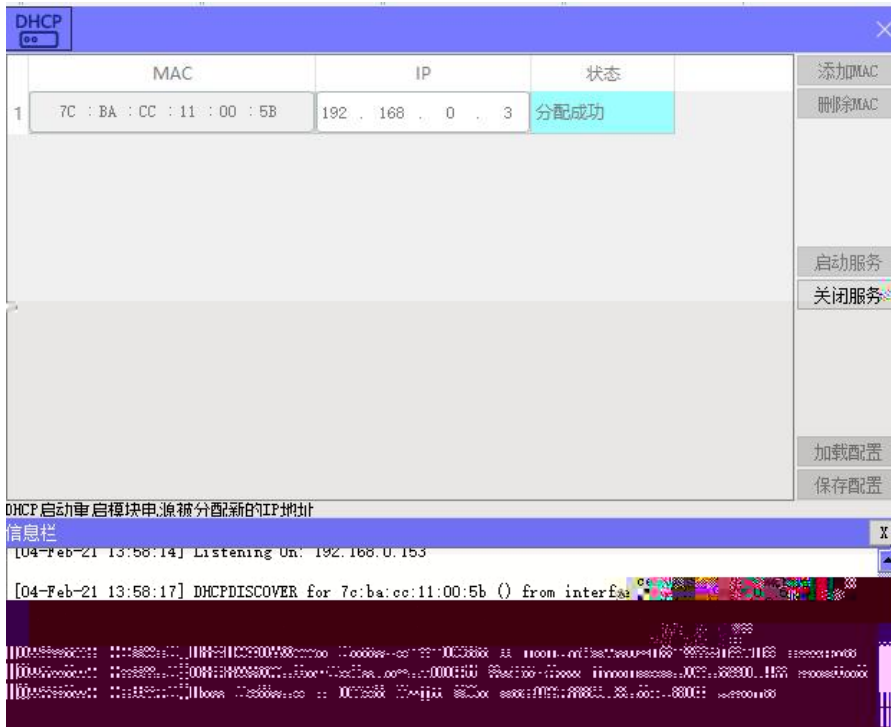
" MAC" " MAC"

MAC

IP

" "

IP





mac IP地址 子网掩码 默认网关 模块名称 状态

mac	IP地址	子网掩码	默认网关	模块名称	状态
-----	------	------	------	------	----

扫描时间 5 :S 全局扫描 修改IP 恢复出厂设置 重启模块

mac IP地址 子网掩码 默认网关 模块名称 状态

mac	IP地址	子网掩码	默认网关	模块名称	状态
00:0C:29:00:00:00	192.168.0.3	255.255.255.0	192.168.0.1	模块名称	就绪

扫描时间 5 :S 全局扫描 修改IP 恢复出厂设置 重启模块

准备进行中 100%

IP

" IP"

IP

5.

MR520X-EP

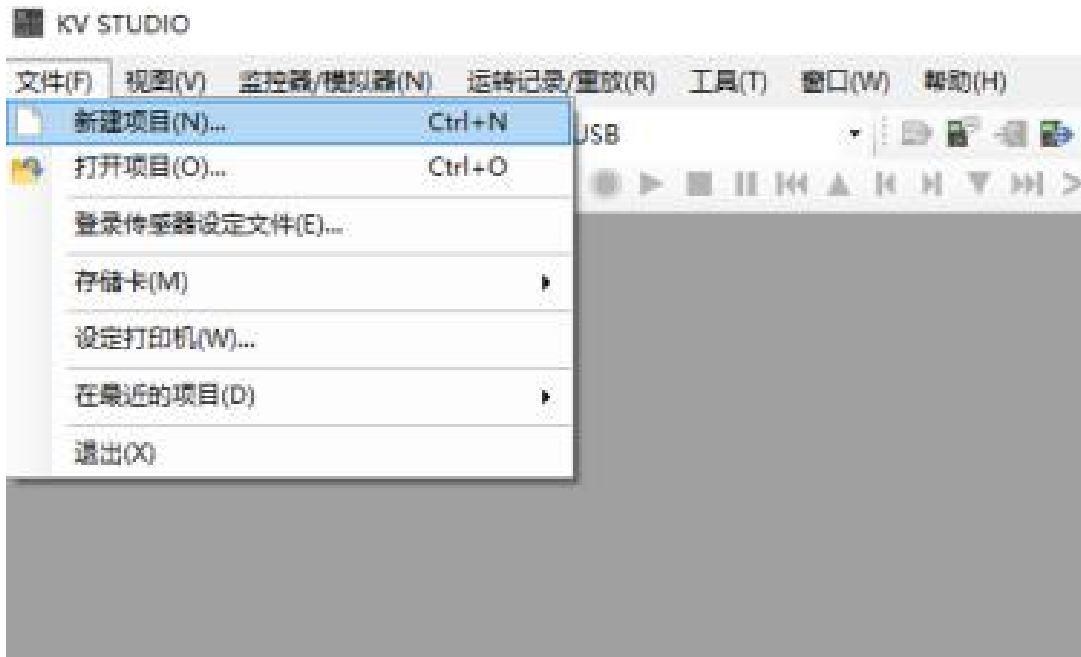
PLC(KV8000)

KV STUDIO

5.1

5.2

KV STUDIO

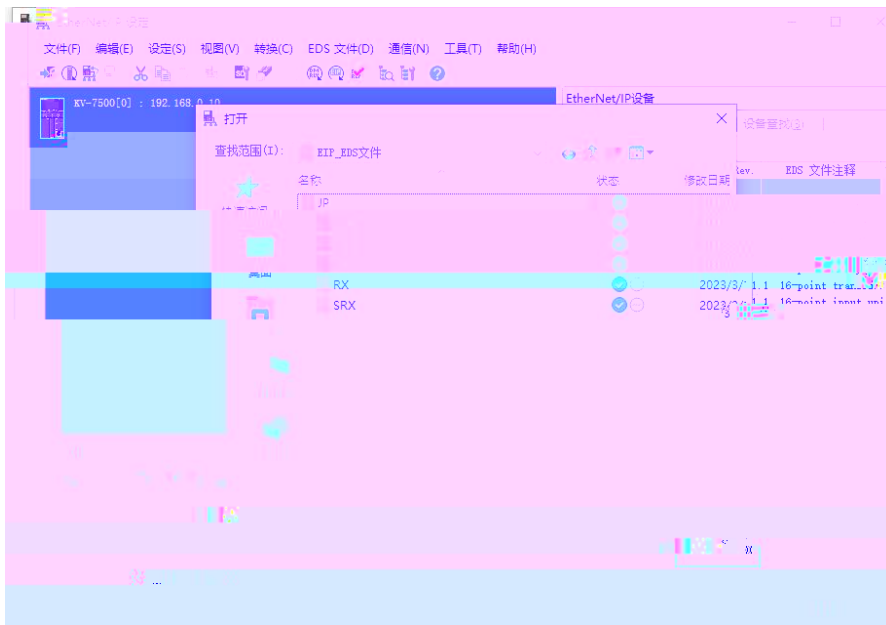


PLC



EDS

EDS



5.5



a, Exclusive Owner

SRX0808x-EP SRX1616x-EP SRX0016x-EP

SRX0032x-EP Input Only

SRX1600x-EP SRX3200x-EP

b,

c, RPI 5-30

Input Data Output Data 1 = 8

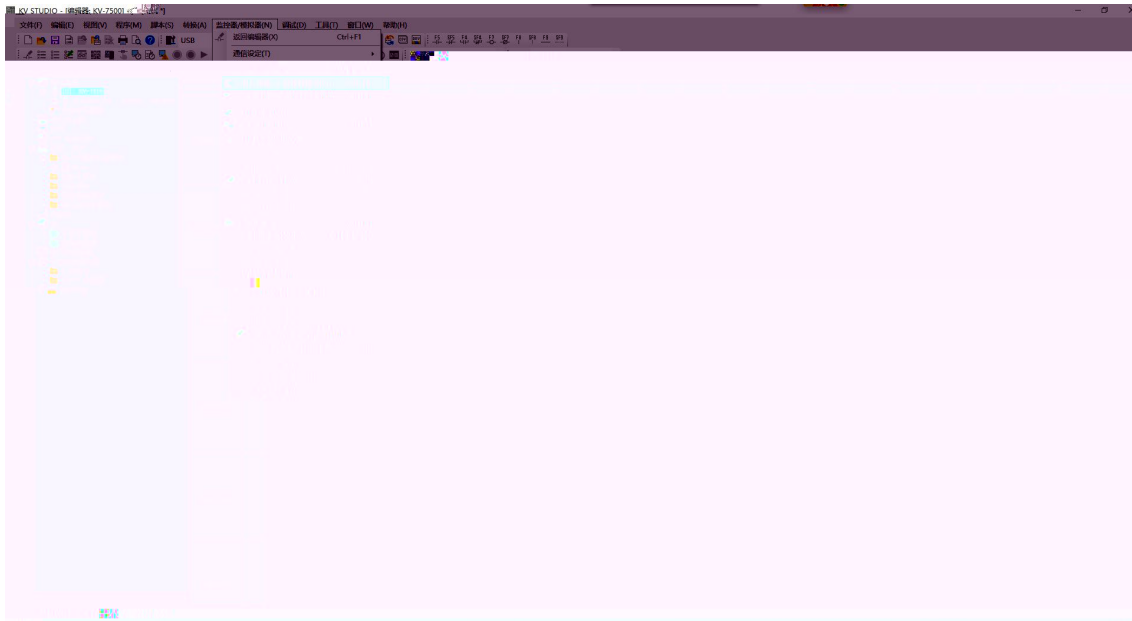
	SRX0808X-EP	SRX1616X-EP	SRX1600-EP	SRX3200-EP	SRX0016X-EP	SRX0032X-EP
Input Data	1	2	2	4	0	0
Output Data	1	2	-	-	2	4
	Exclusive owner		Input Only		Exclusive owner	

LAECONFIG

I_SIZE(byte)	O_Size(byte)	C_Size(byte)

PLC

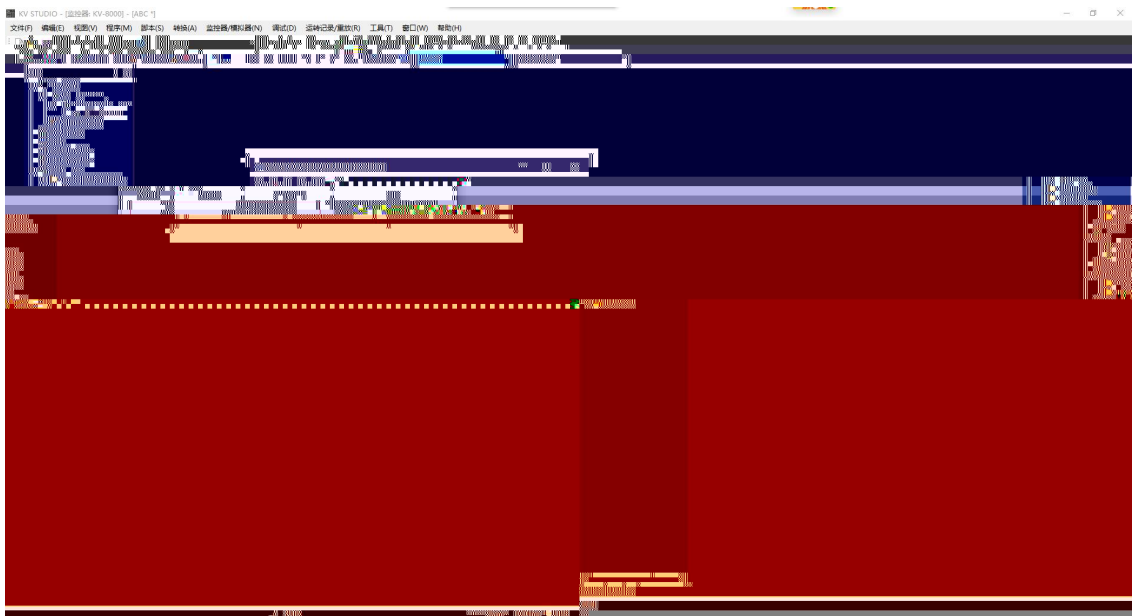
plc



5.6

PLC

" " " "



6.

1.

windows

ping

IP

ping

ping

IP

IP

2

RUN

ERR

IP

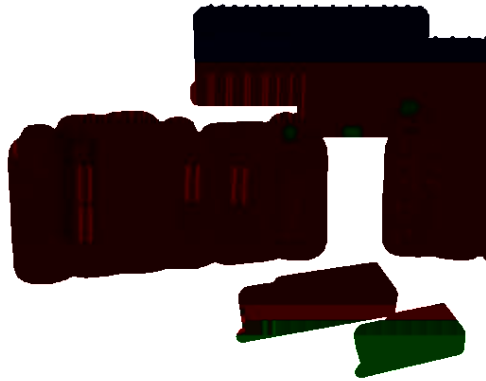
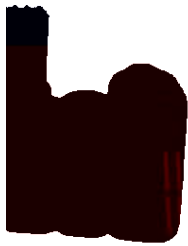
IP

IP



原科自研
LATCOS

原科自研
LATCOS 原科自研



www.latcos.cn

3

0510-85888030

7 701