

凌科自动化

User Manual

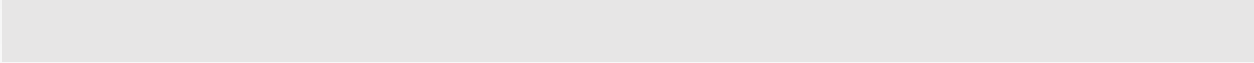


ETHERNET/IP
MODBUS RTU
APG 1503

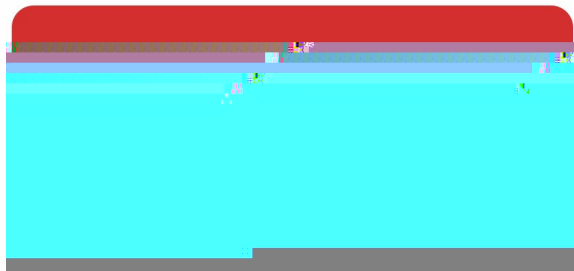
RS485

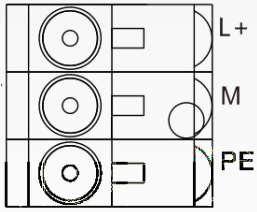






1		ETHERNET/IP
2		10/100 Mbaud
3	RJ45	IEEE 802.xx
4		MAC
5		CAT5e
6		





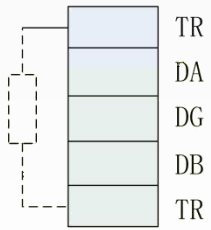
1	L	24V
2	M	
3	PE	

X1P2, RJ45 X1P1
 LED 3 Modbus mac
 3 ETHERNET/IP

PWR			
ALM		Modbus	
RX		Modbus	
TX		Modbus	
RY		operate	
MT		LED	
SF		---	
ER		ETHERNET/IP	

Mobus 120R TR
 TR1 DA, TR2 DB

4



1	TR1		
2	DA	/	A
3	DG		
4	DB	/	B
5	TR2		



status

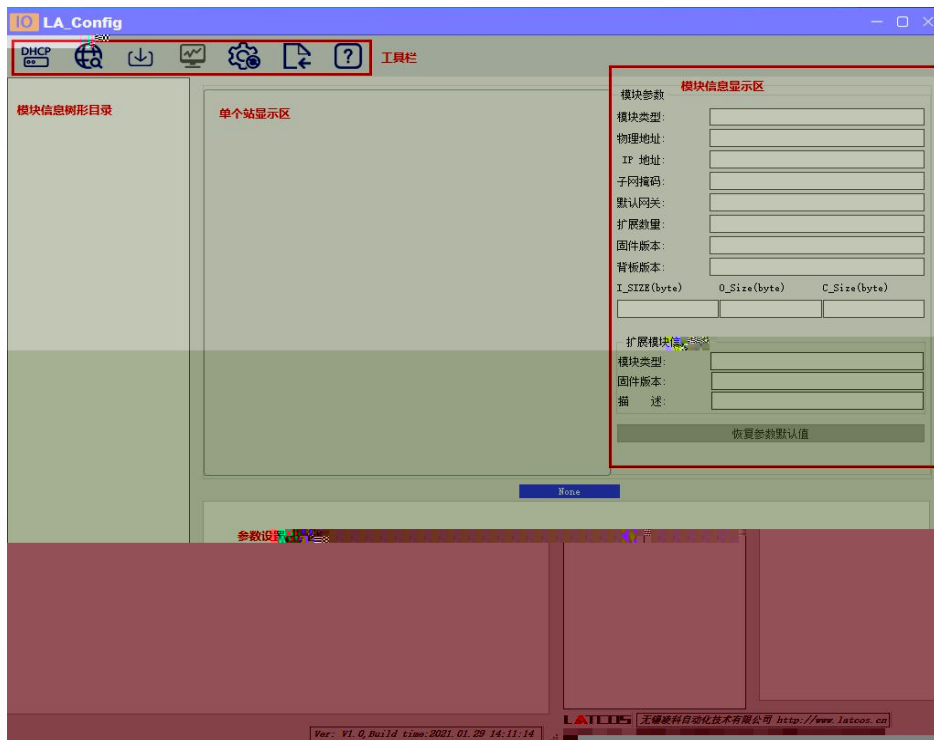
control

/			



“LAEConfig” LAEConfig

WIN10





地址范围: 168 . 192 . 168 0

0%

开始 停止



DHCPService

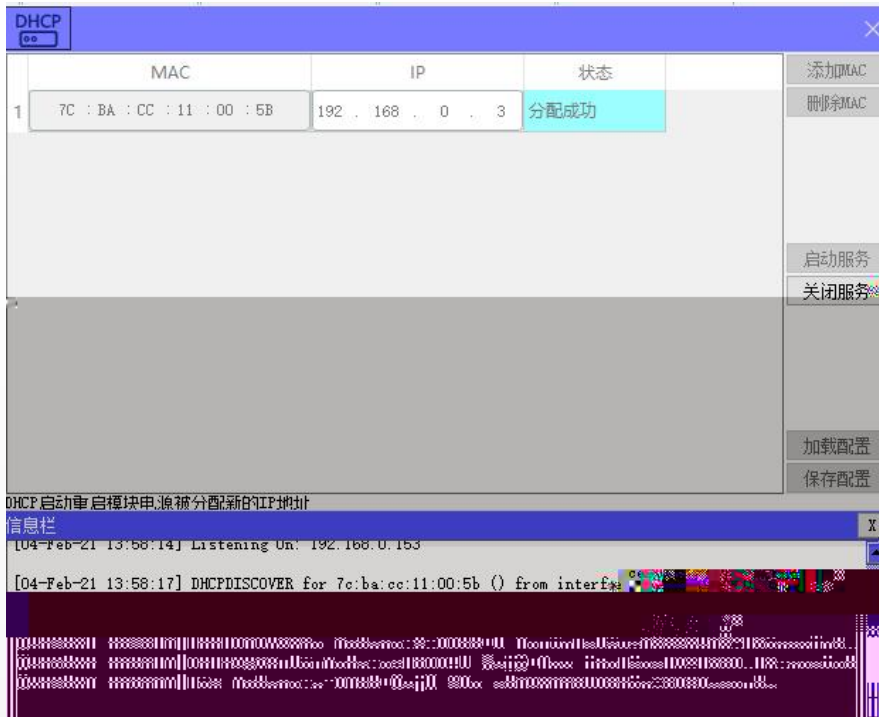
" MAC" "

MAC"

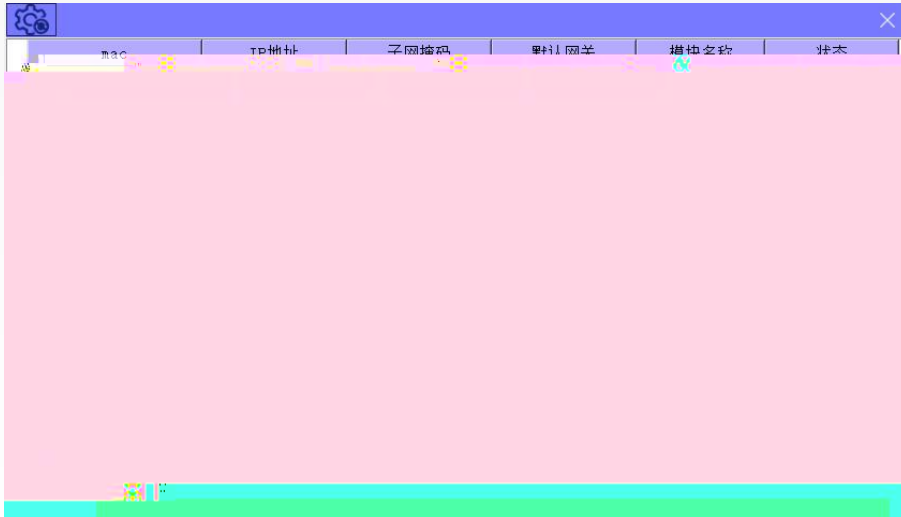
MAC

IP

IP



" "



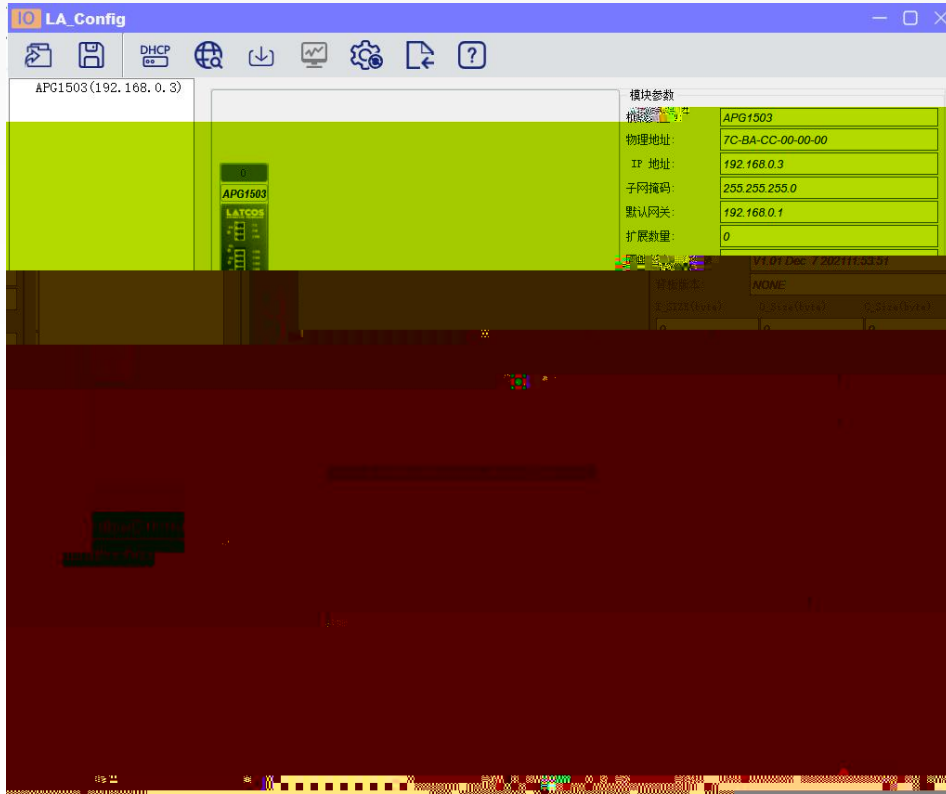
IP

" IP"

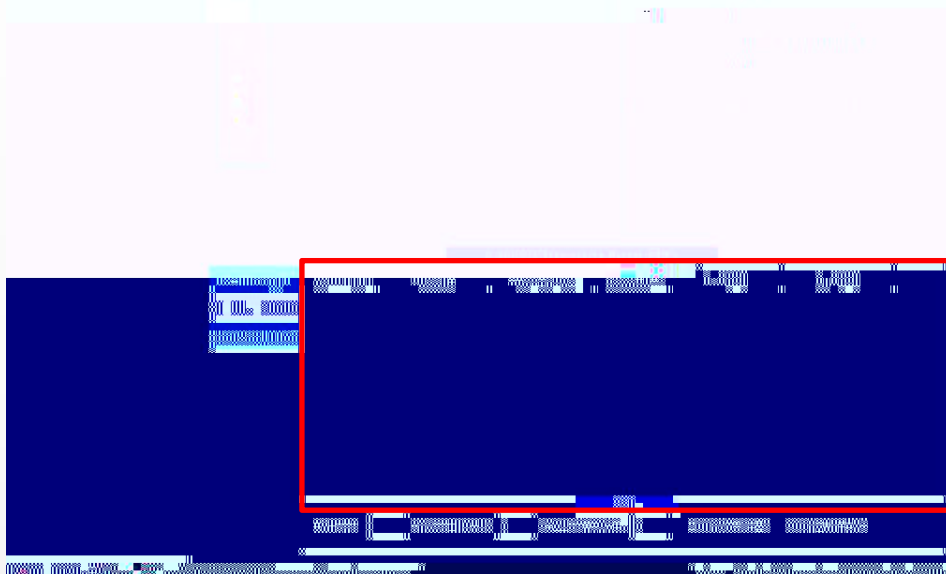
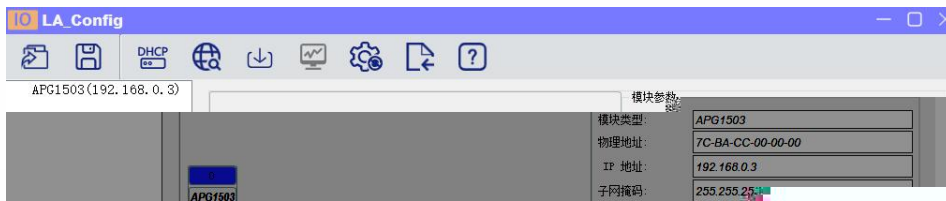
IP

1 modbus master

modbus



2. modbus config



3.

" " modbus

增加
删除

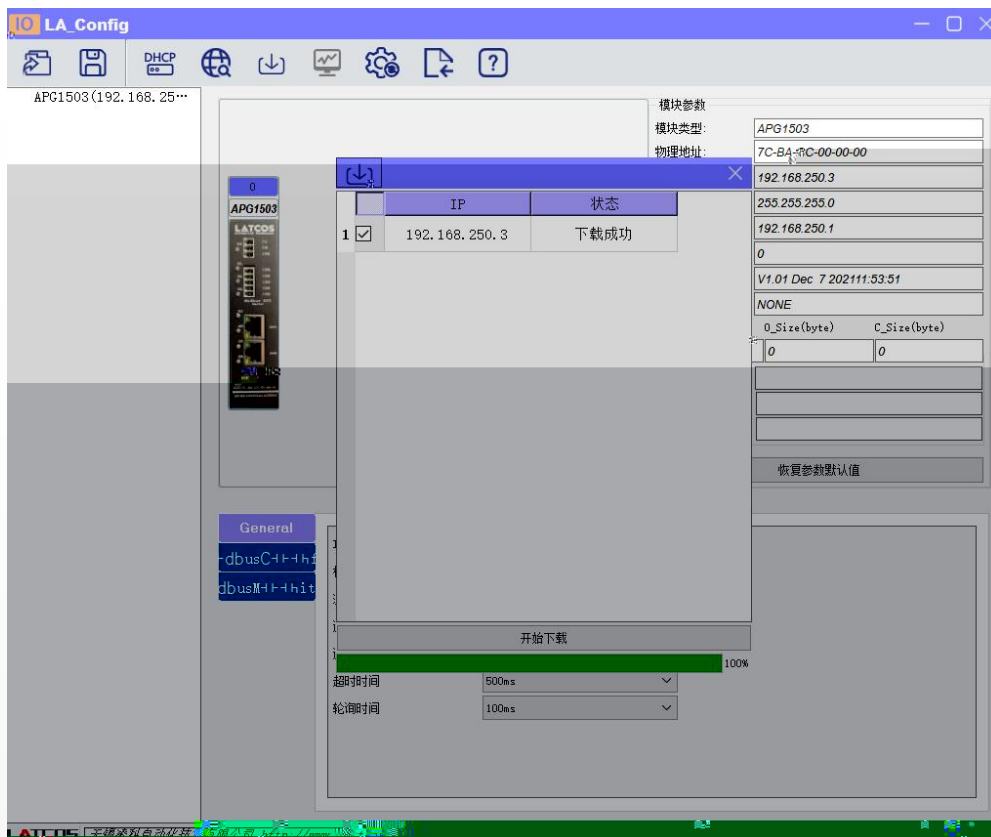
" " modbus

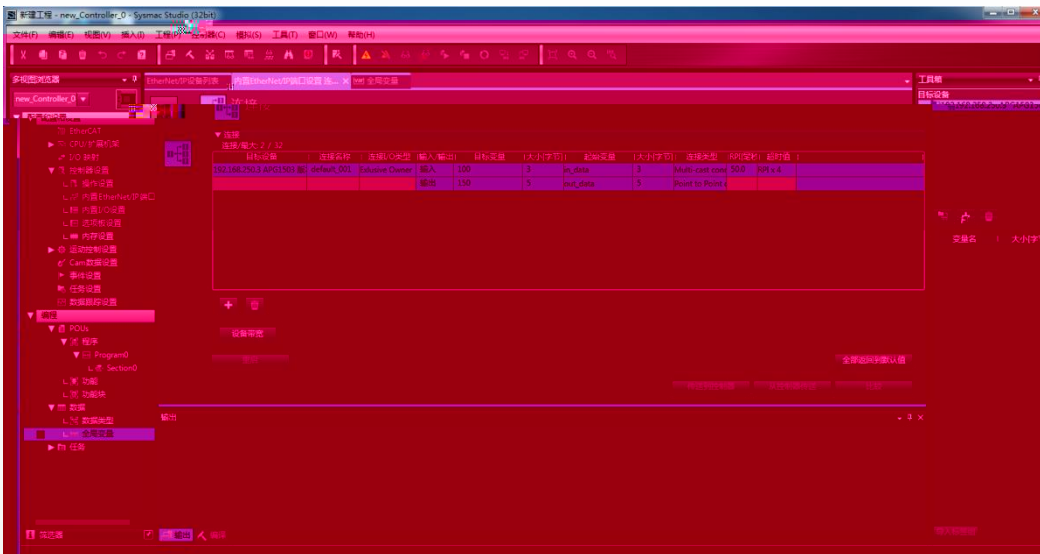
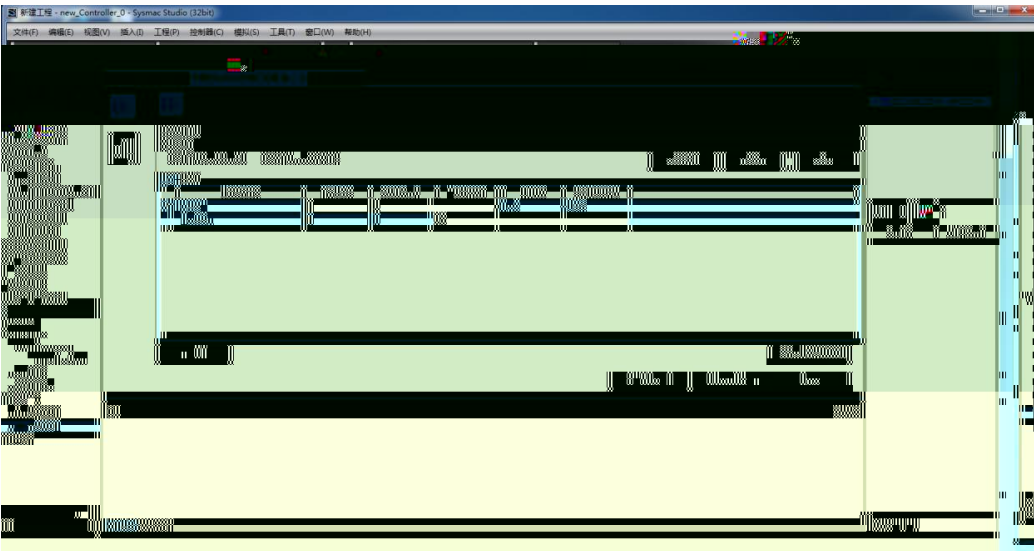
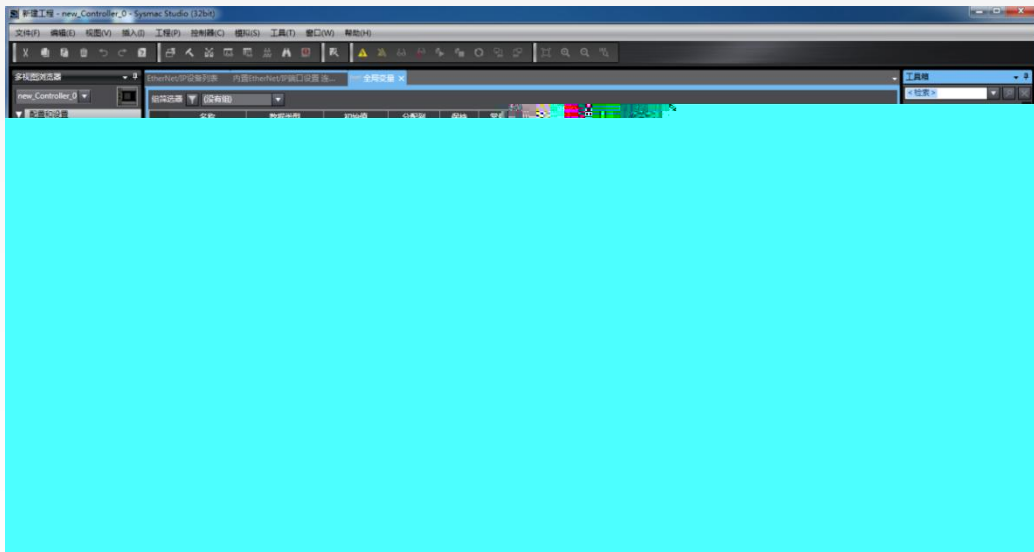


modbus

PLC

4.



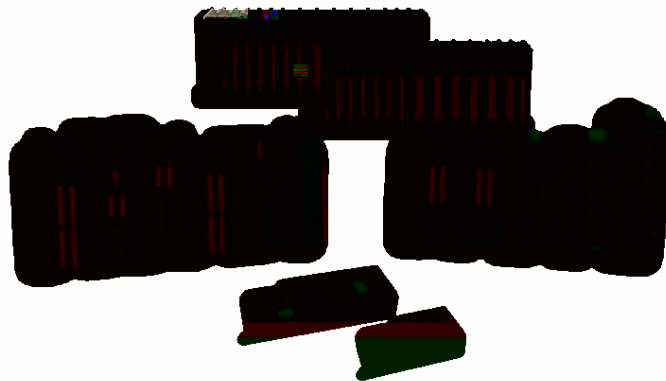


in_data(0)		
in_data(1)	1	
in_data(2)		
out_data(0)		
out_data(1)	1	
out_data(2)		
out_data(3)	2	
out_data(4)		



凌科自动化
LATCOS
Automation Technology, Inc.

先进自动化控制及工业网络技术



Copyright © 2023Wuxi Latcos Automation Technology, Inc. All rights reserved.

www.latcos.cn