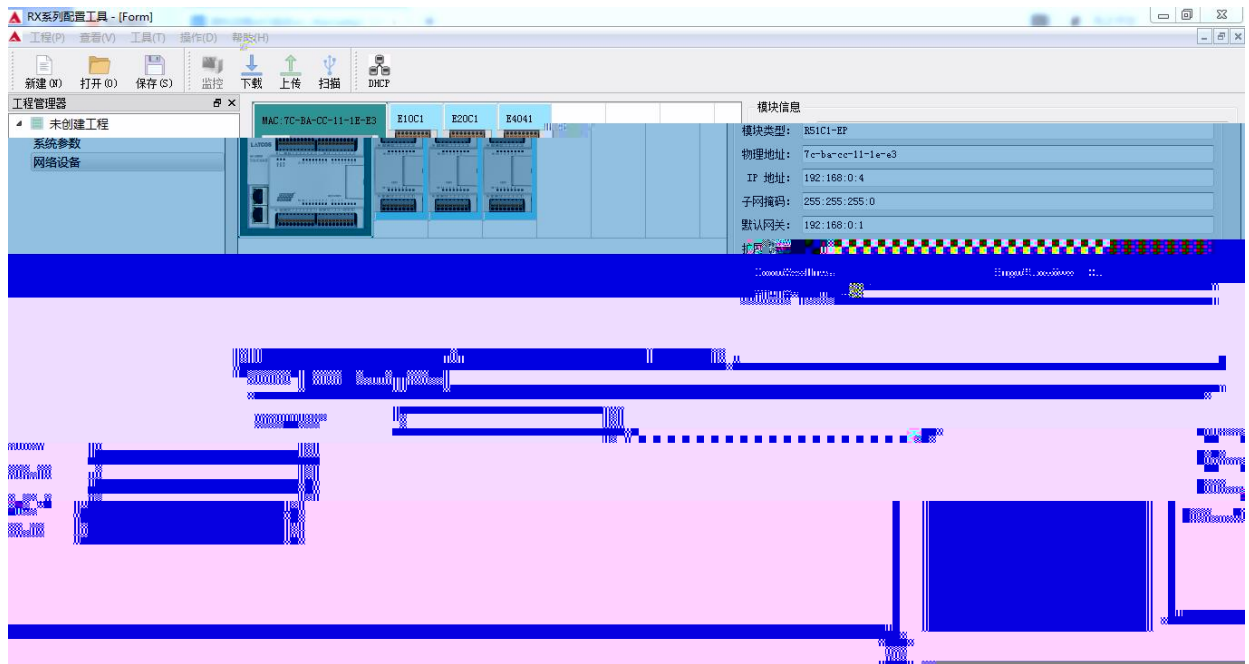
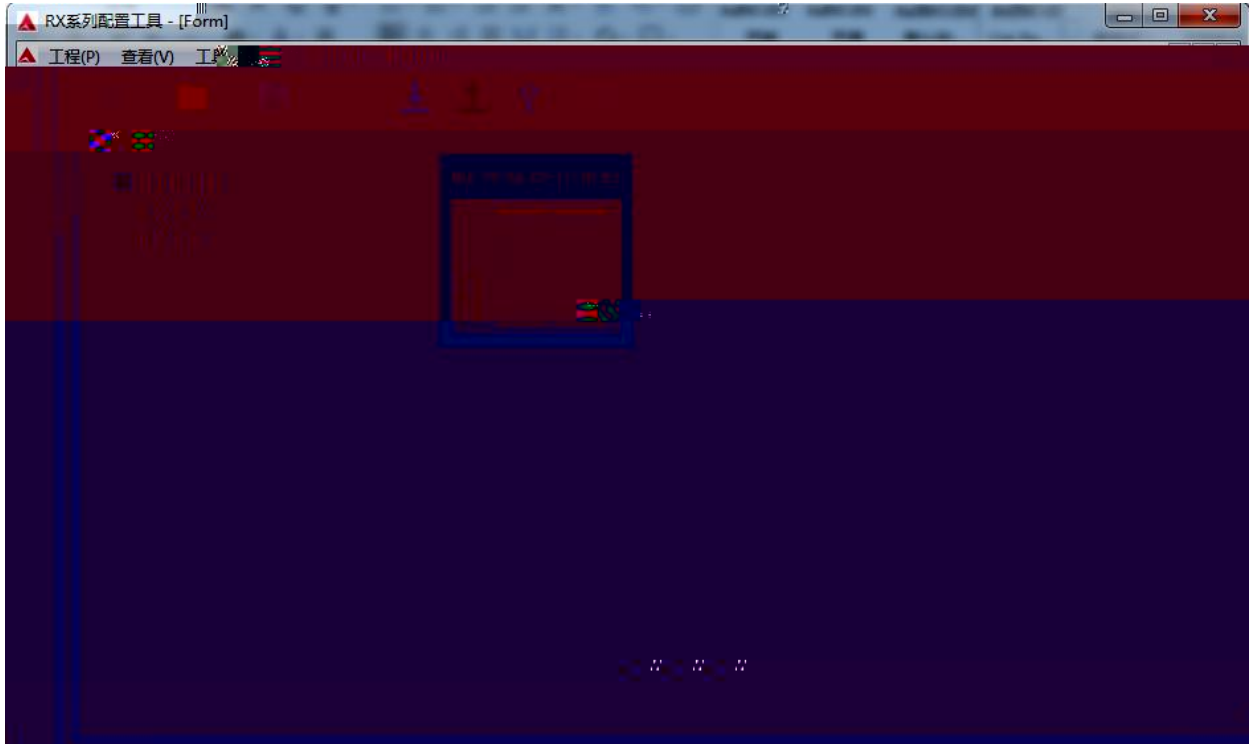




网络设备



模块信息

模块类型:	R51C1-EP
物理地址:	7c-ba-cc-11-1e-e3
IP 地址:	192.168.0:4
子网掩码:	255.255.255.0
默认网关:	192.168.0:1
扩展数量:	3
InputSize (byte)	4
OutputSize (byte)	12
固件版本:	V1.10

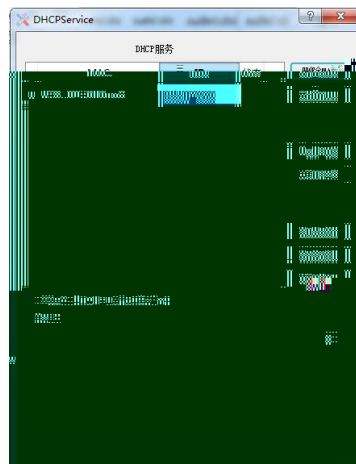
R51C1-EP E10C1 E20C1 E4041

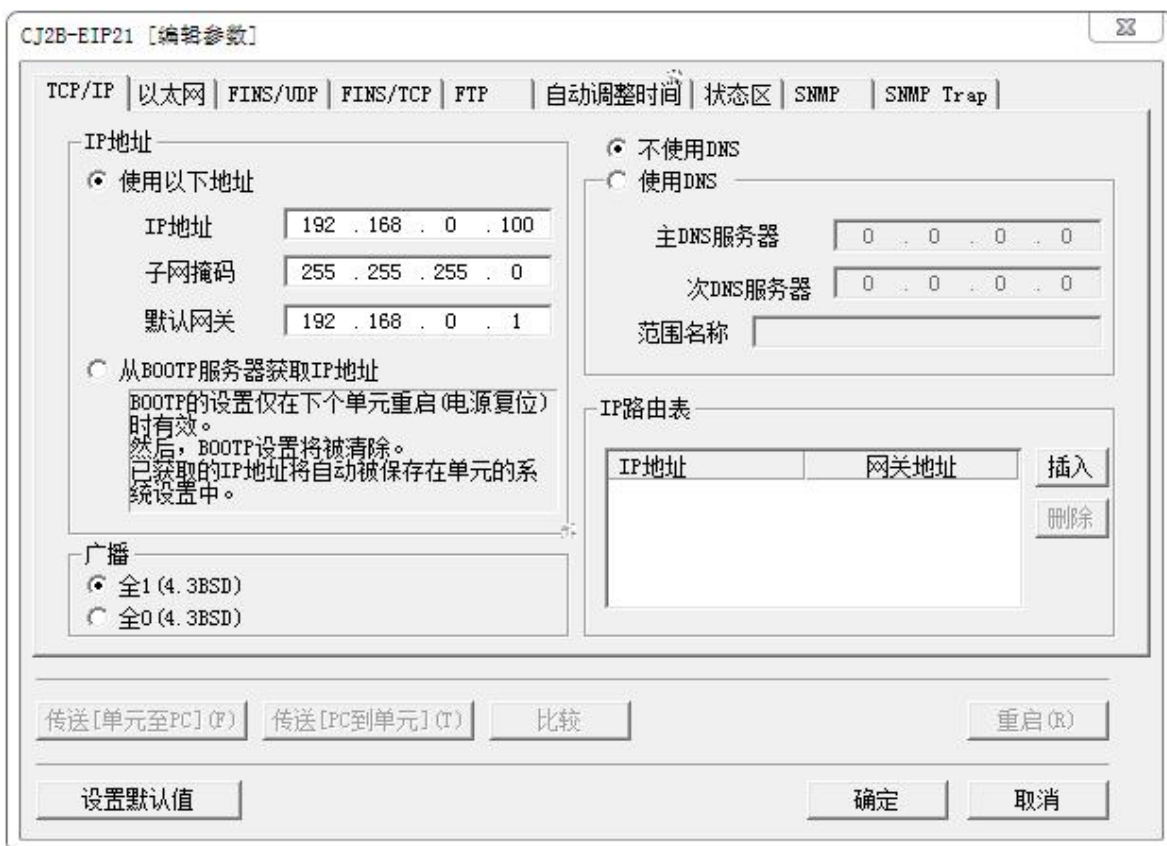
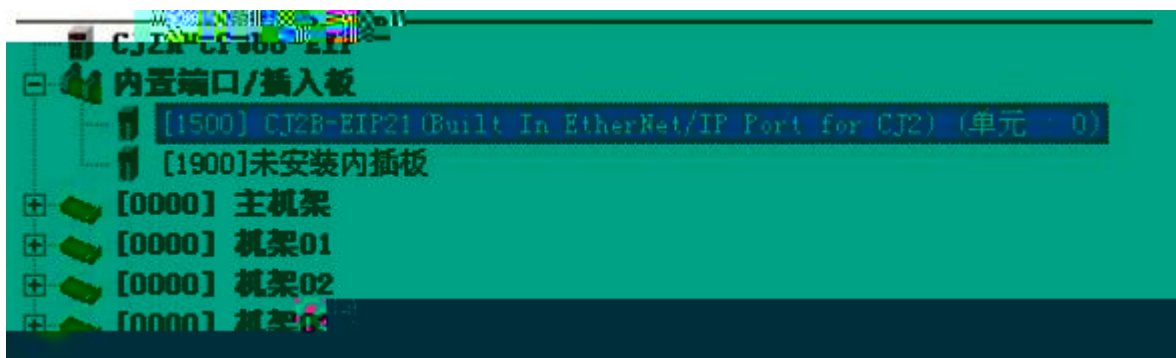
Input_Filter	5	
Error_Mode0..7	0	
Error_Mode8..15	0	
Error_Value0..7	0	
Error_Value8..15	0	

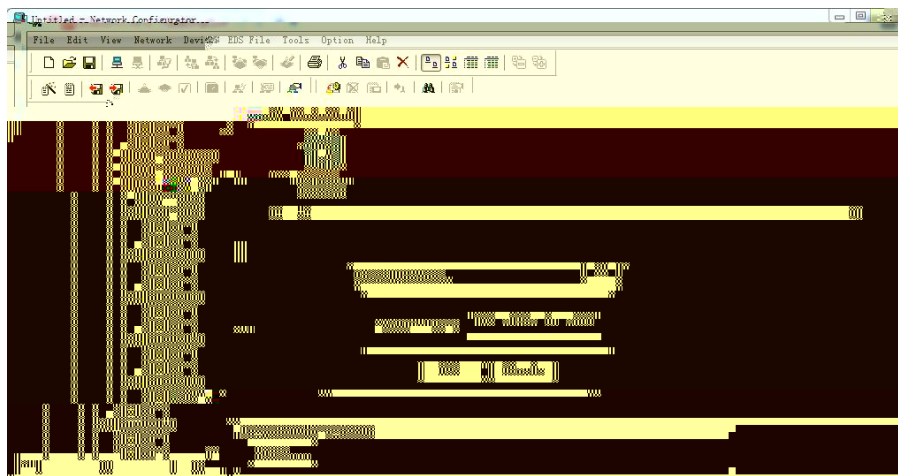
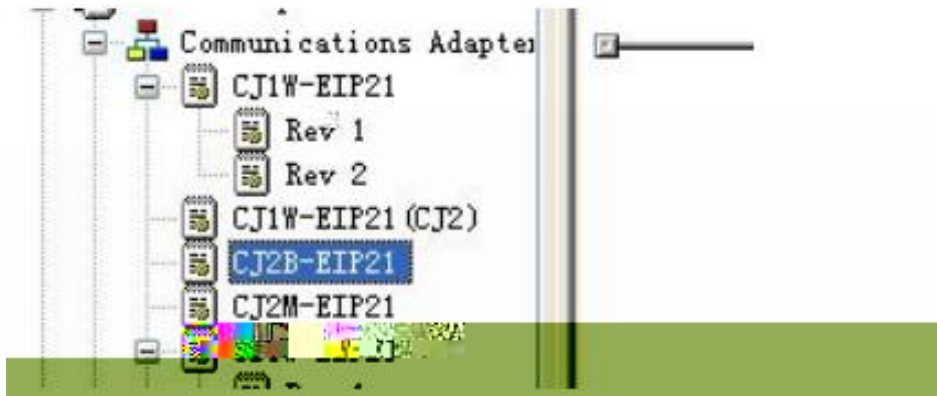
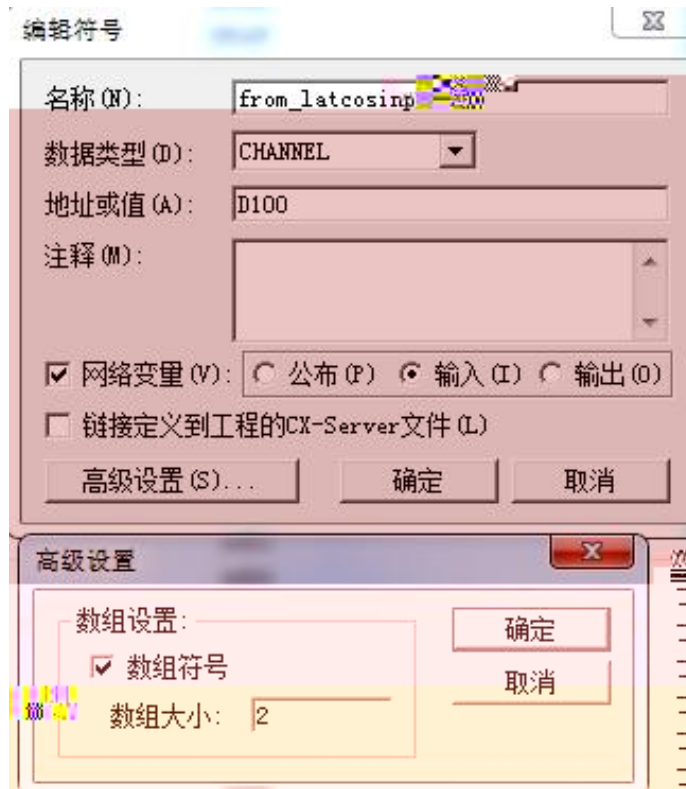


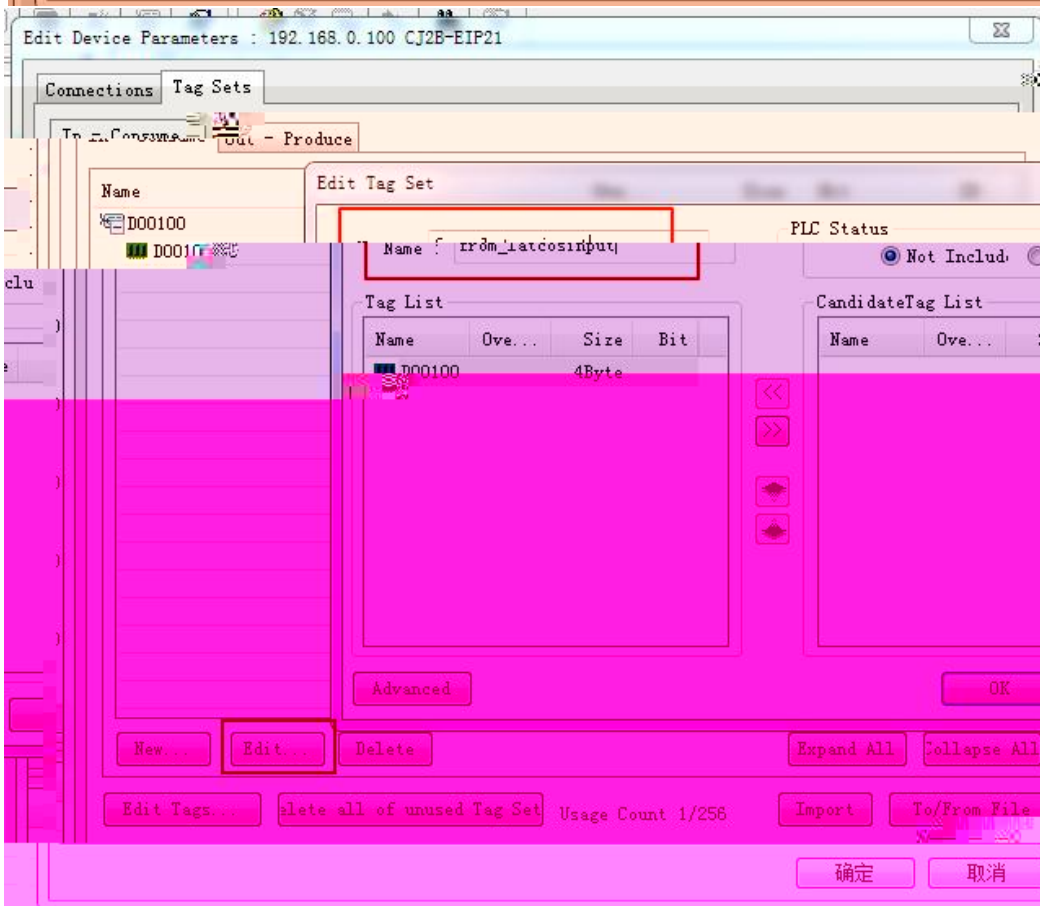
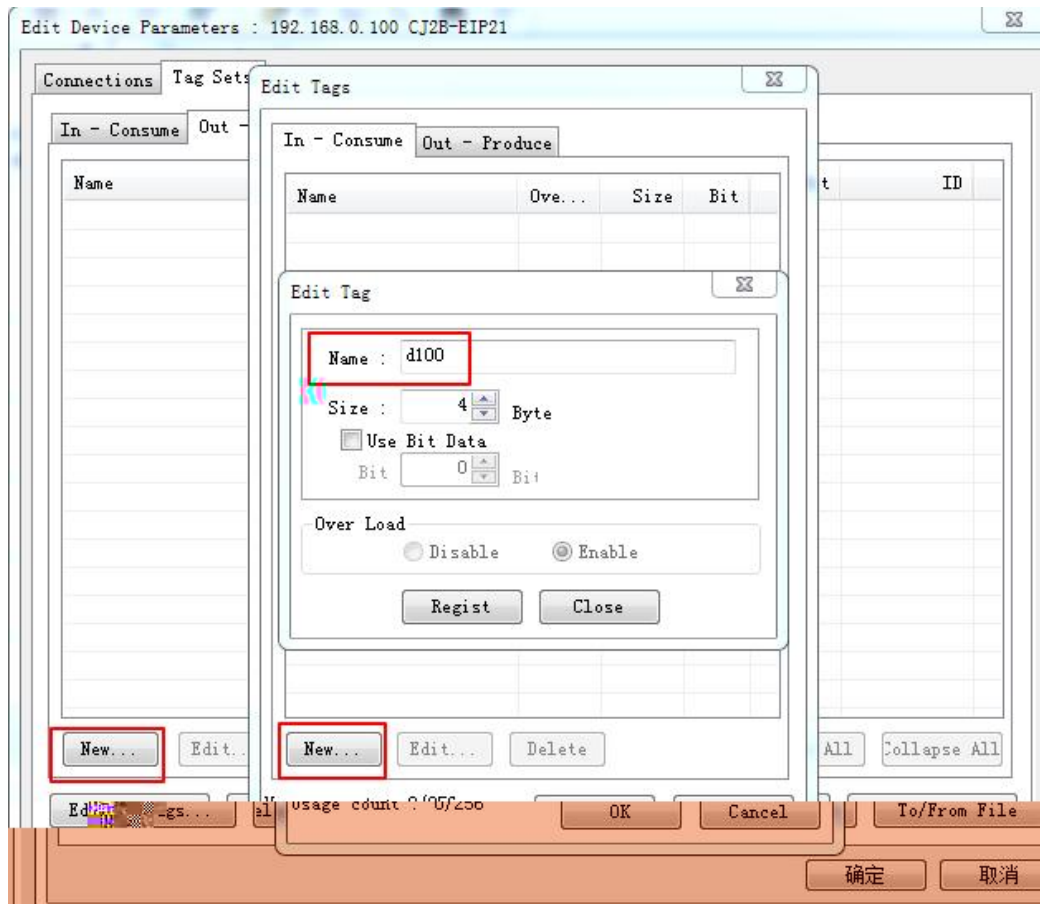
添加MAC

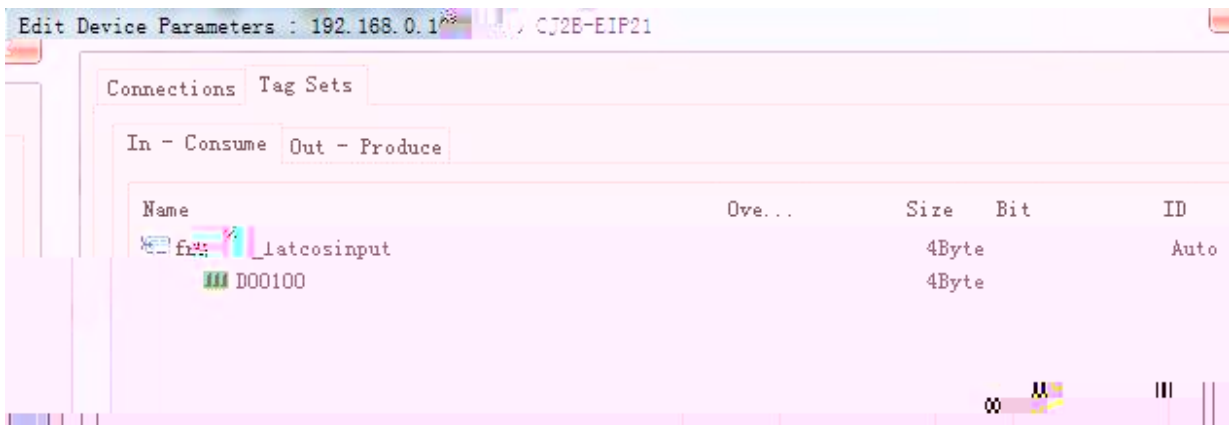
启动服务



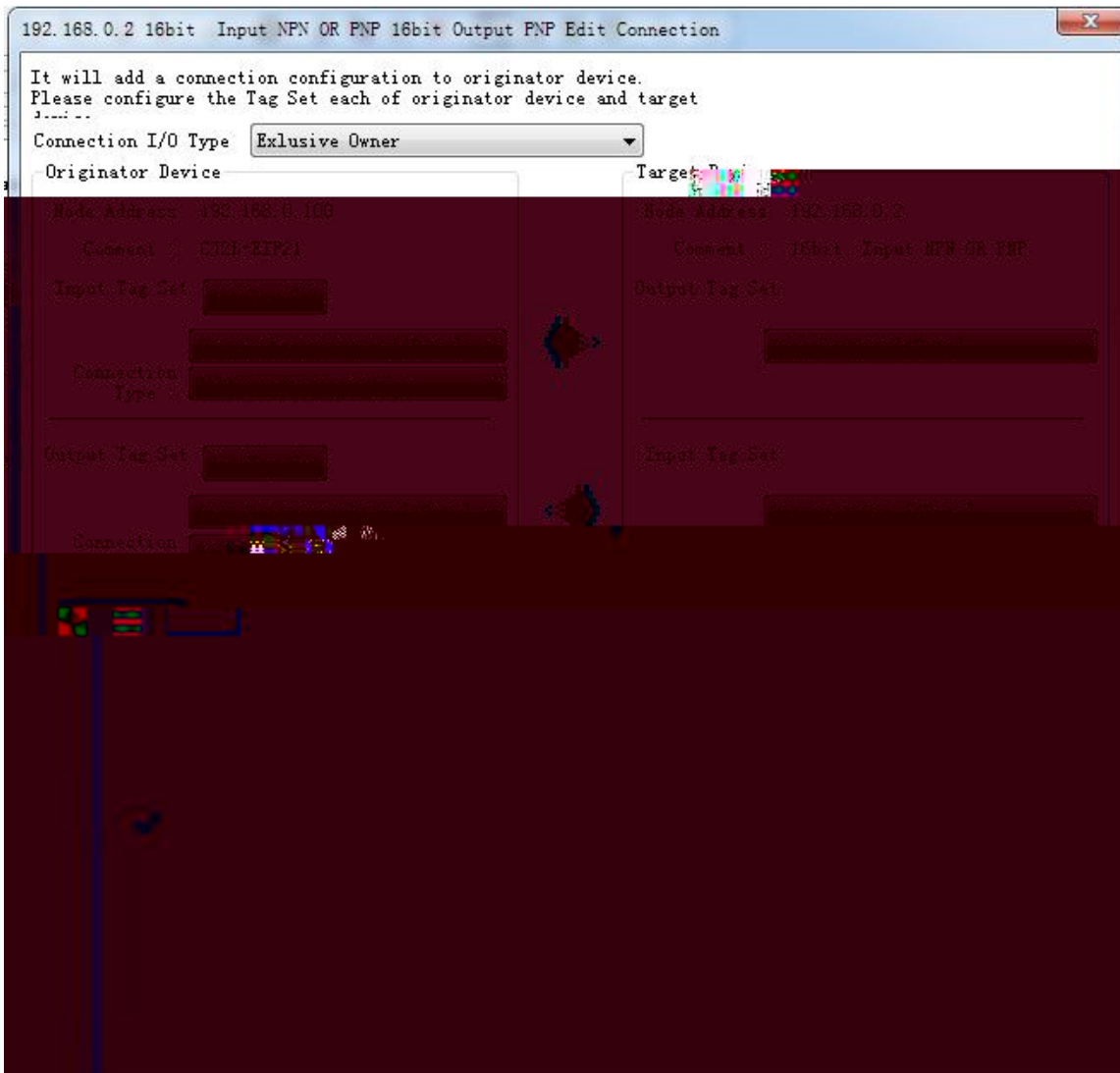
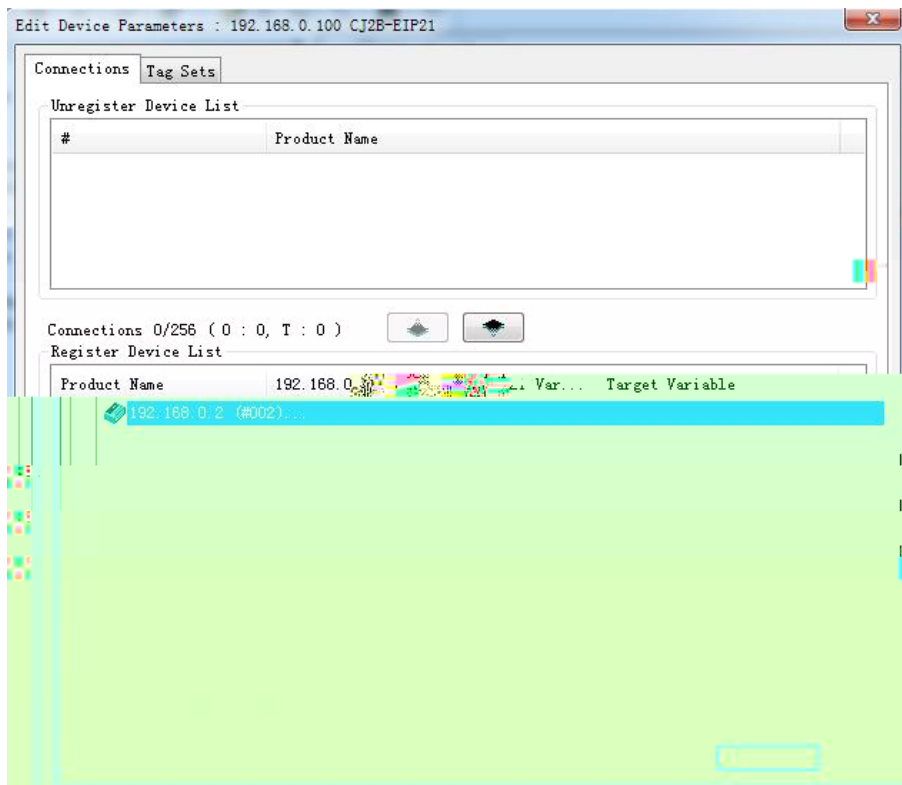


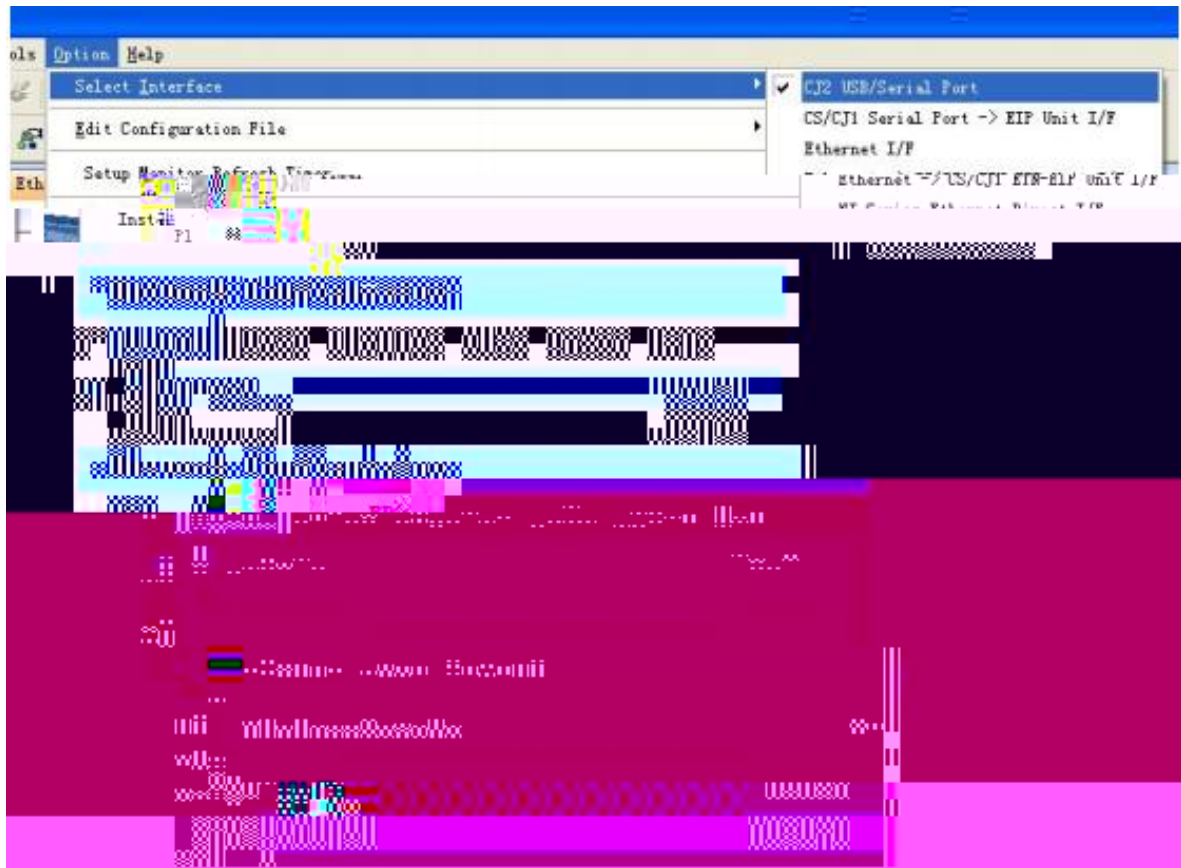






[REDACTED]







液科自能
LATCOS

液科自能 液科自能

