

透科自动化

MR

KV 8000

ethernetip)

Ethernet/IP MR

KV8000



2023-3-23

2023 03 23

20223 03 23

1.

KV STUDIO Ver.10G

2.

KV8000	Ethernet/IP	IO	KV STUDIO Ver.10G
IO	.eds	IO	

3.

- KV STUDIO Ver.10G
- IO MR_EP20221128.eds

4.

4.1

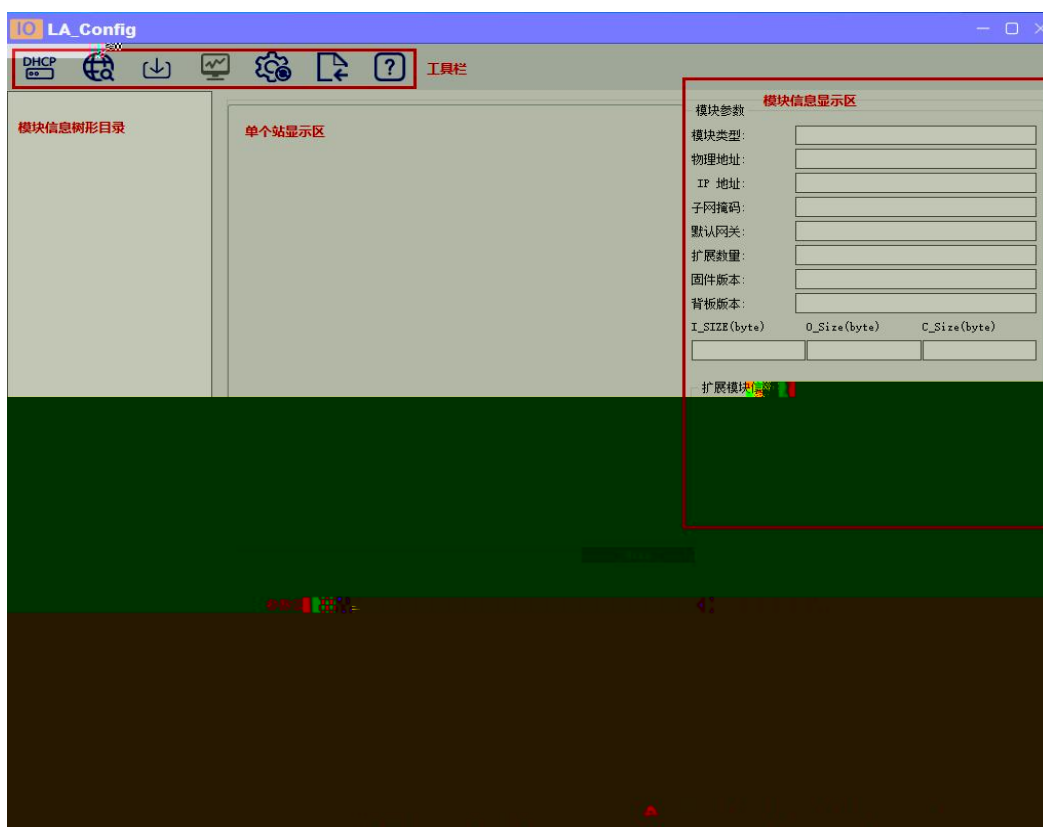
- 1. KV8000 IO
- 2. PLC Ethernet IO

4.2

IP

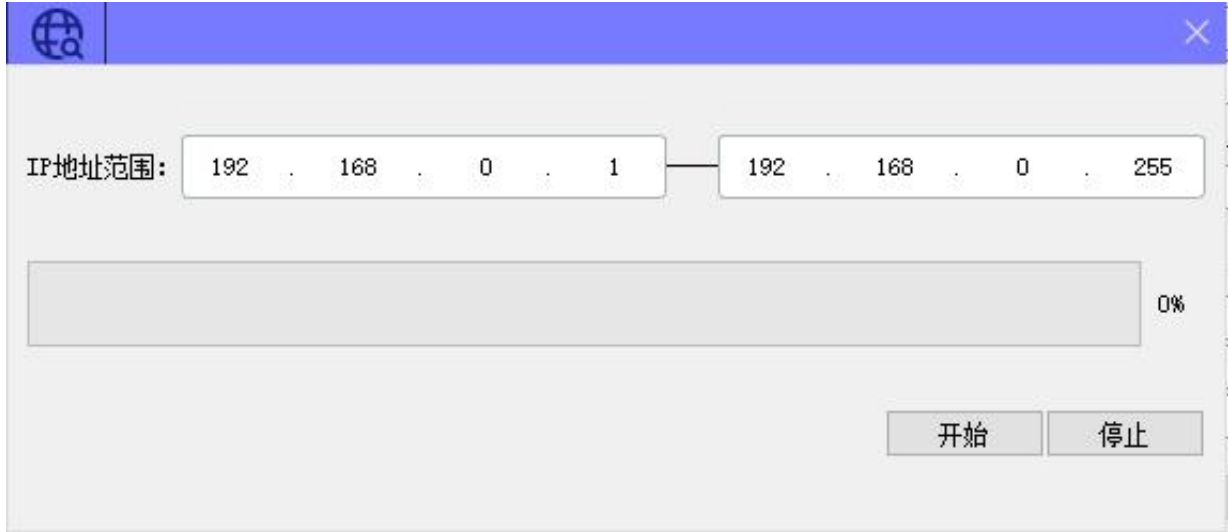
4.2.1

LAEConfig	IP	IP 192.168.0.x
-----------	----	----------------





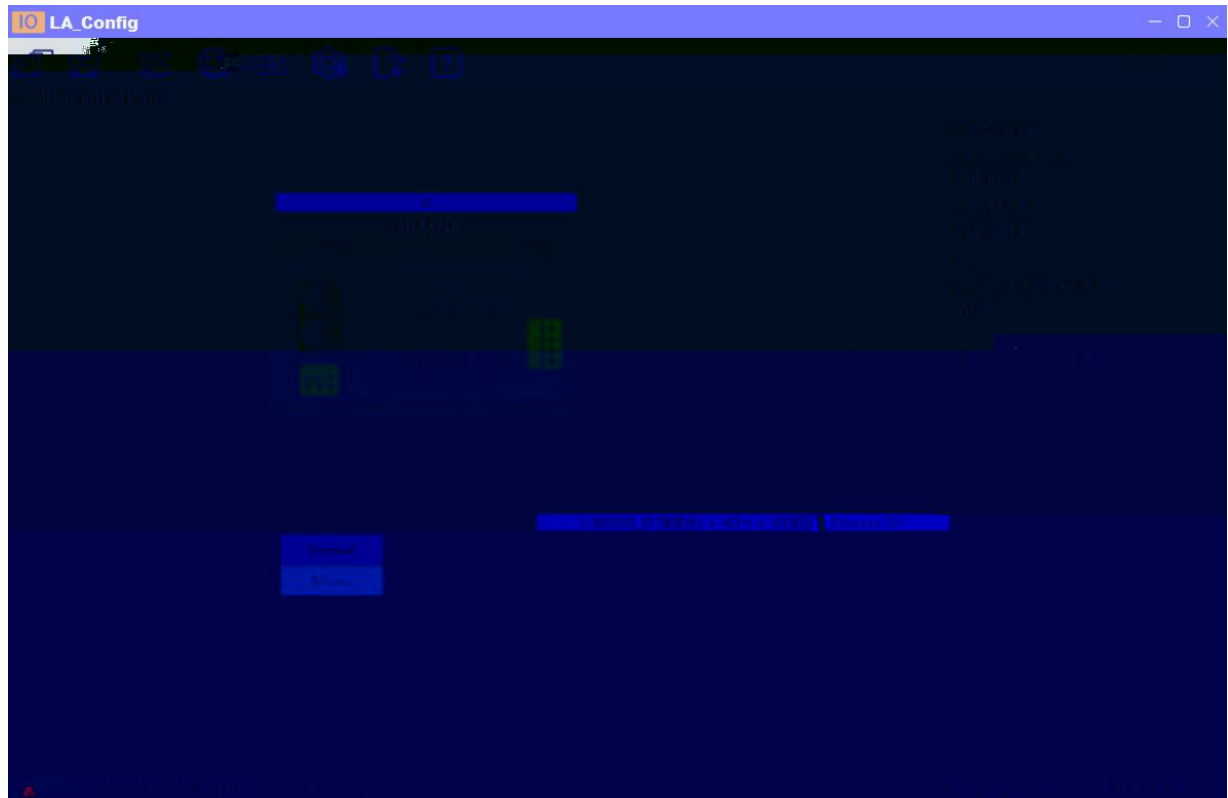
4.2.2



IP

IP

IP



4.2.3

IP

1

"IP"

IP"

DHCP 启动前 启模块申请被分配新的IP地址

	MAC	IP	状态
1	7C : BA : CC : 11 : 00 : 56	192 . 168 . 0 . 4	未分配

信息栏



DHCPService

" MAC" " MAC"

MAC

IP

" "

IP

DHCP 启动前 启模块申请被分配新的IP地址

	MAC	IP	状态
1	7C : BA : CC : 11 : 00 : 5B	192 . 168 . 0 . 3	分配成功

信息栏

```
[04-Feb-21 13:58:14] Listening On: 192.168.0.153
[04-Feb-21 13:58:17] DHCPDISCOVER for 7c:ba:cc:11:00:5b () from interface:
[04-Feb-21 13:58:17] DHCPDISCOVER for 7c:ba:cc:11:00:5b () from interface:
[04-Feb-21 13:58:17] DHCPDISCOVER for 7c:ba:cc:11:00:5b () from interface:
```



mac	IP地址	子网掩码	默认网关	模块名称	状态
-----	------	------	------	------	----

扫描时间 5 :S

全局扫描 修改IP 恢复出厂设置 重启模块

mac	IP地址	子网掩码	默认网关	模块名称	状态
-----	------	------	------	------	----

IP " IP" IP

5.

MR0808X-EP

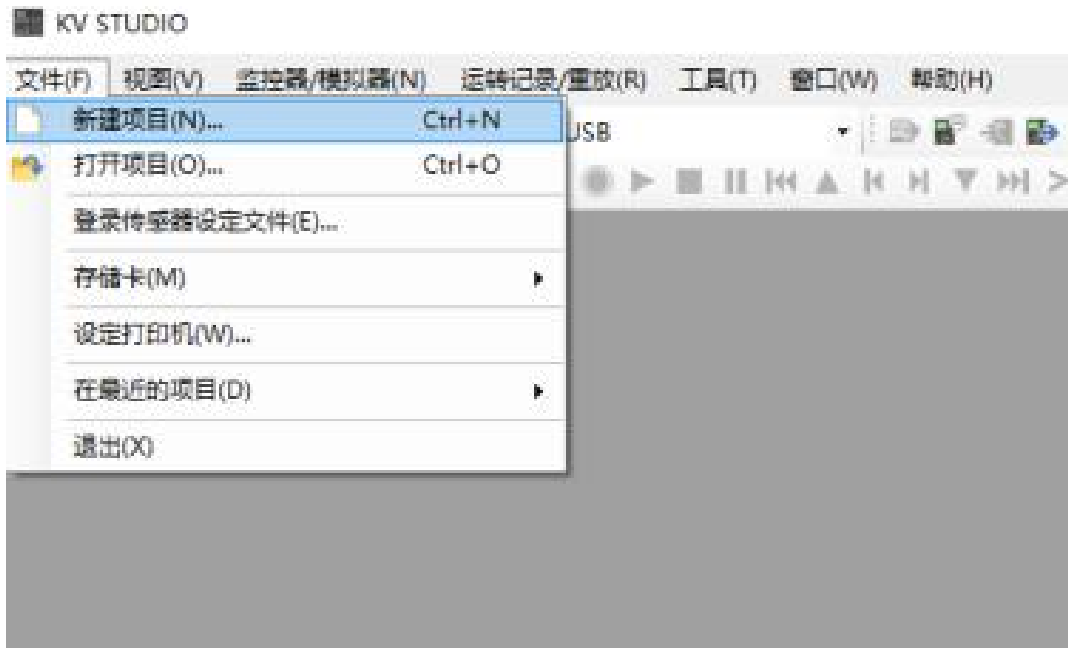
PLC (KV8000)

KV STUDIO

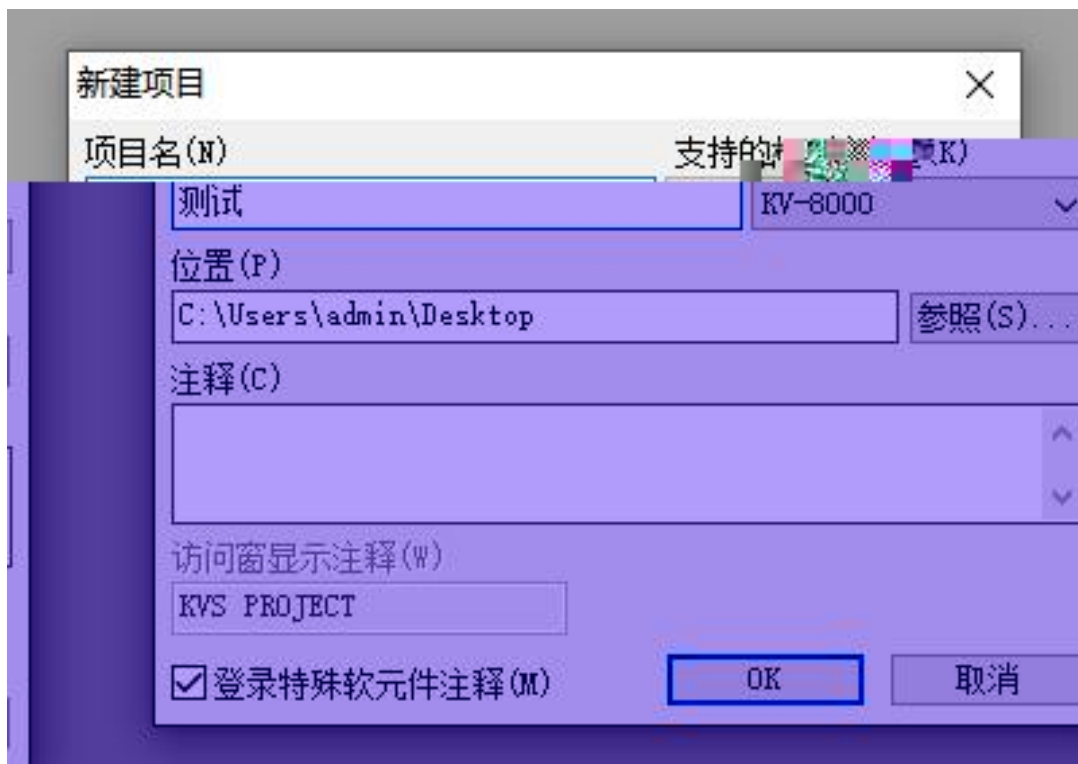
5.1

5.2

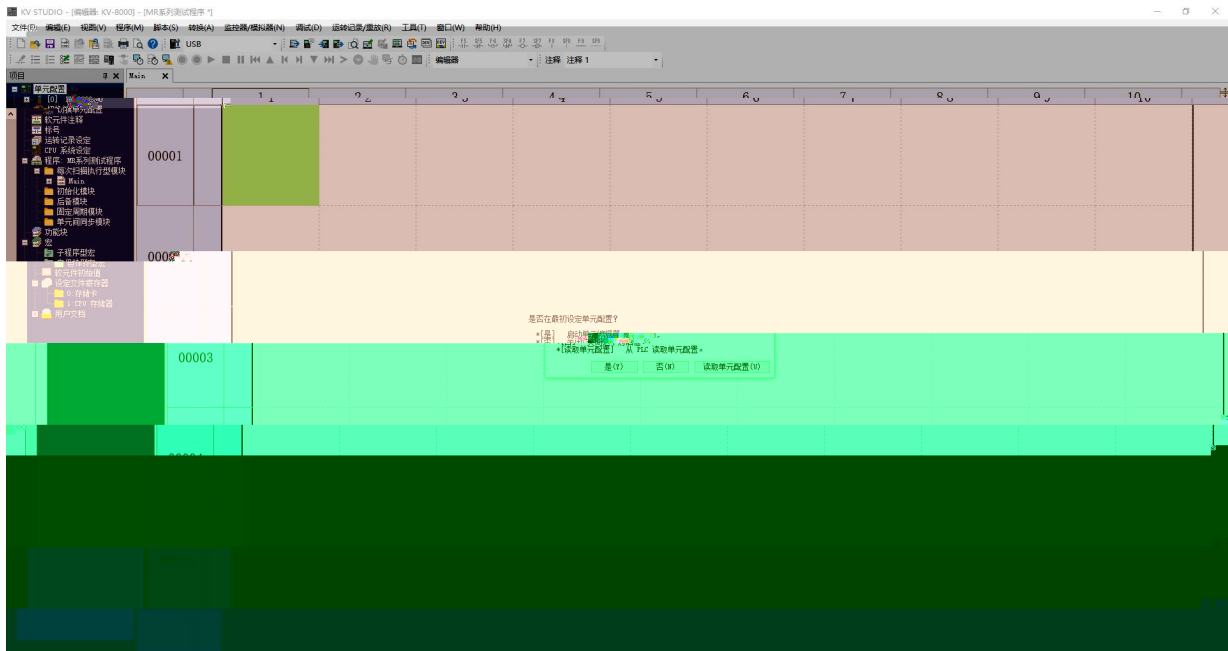
KV STUDIO



PLC

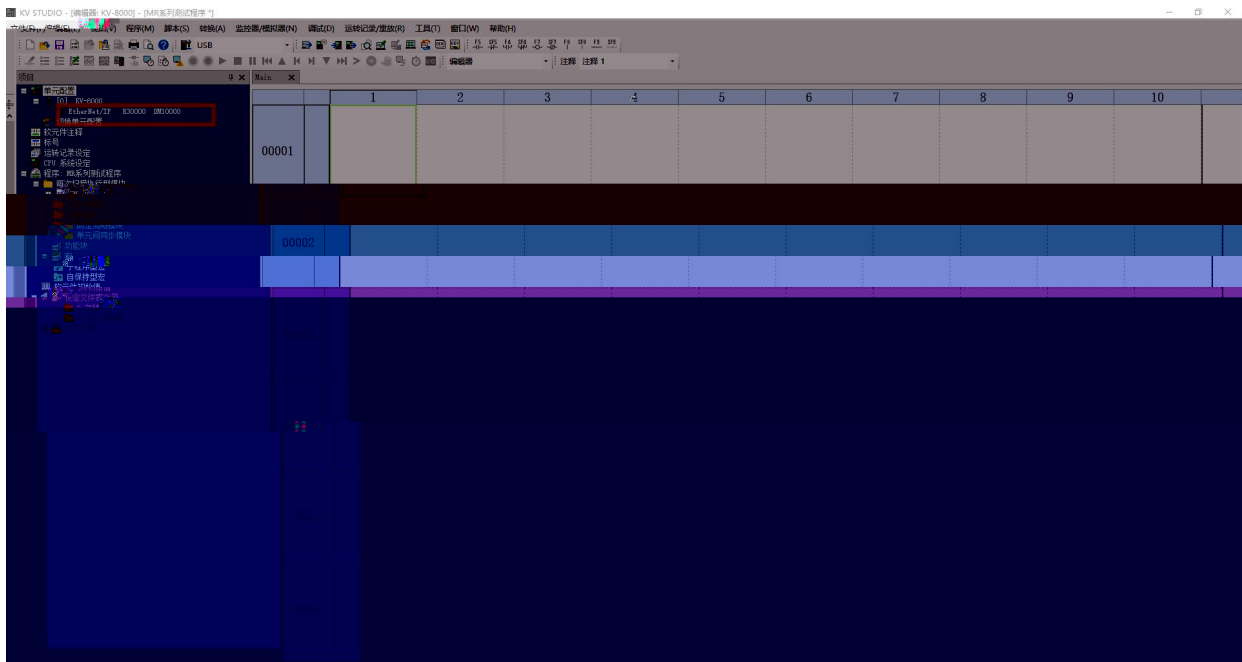


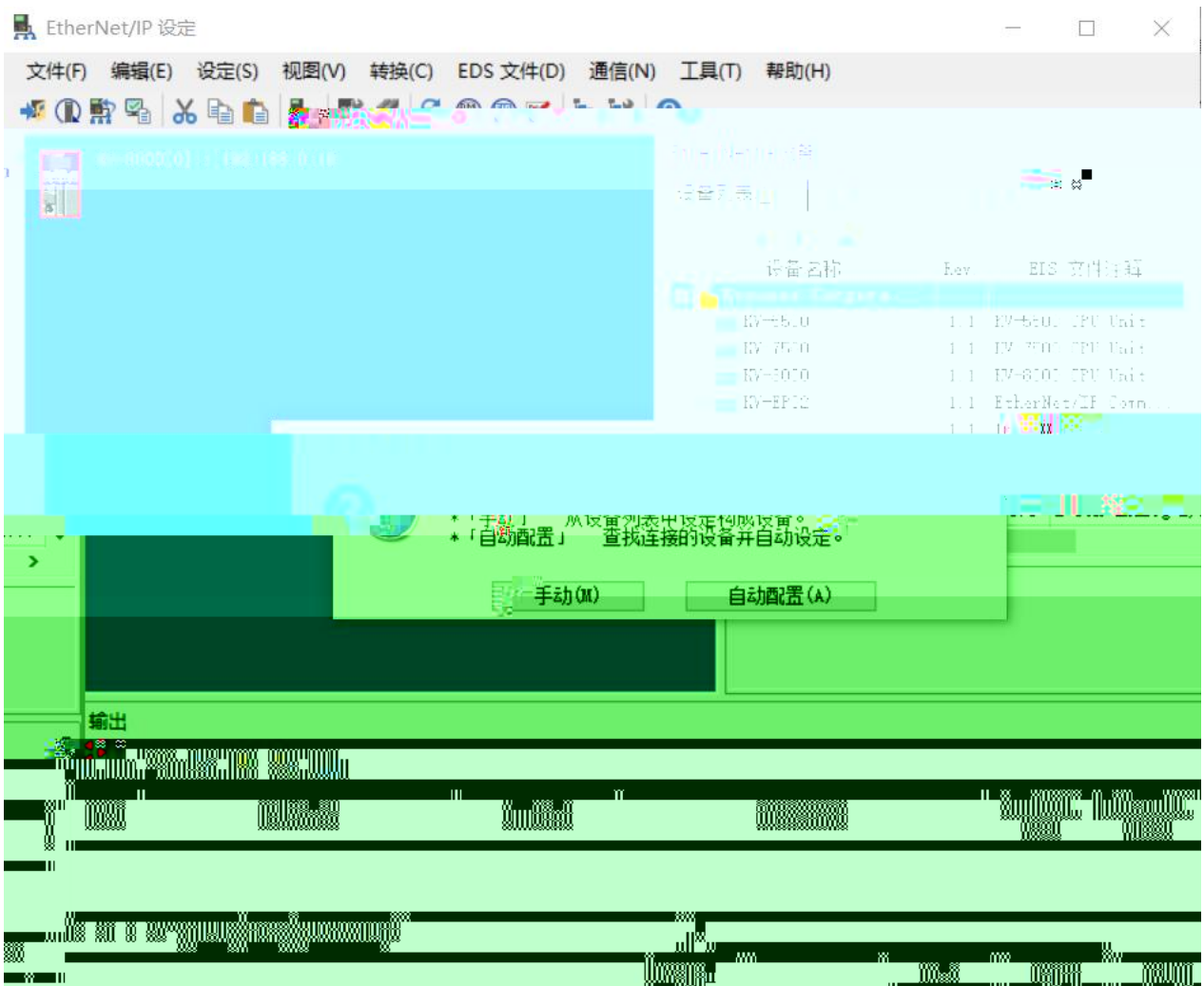
5.3 EtherNet/IP



PLC

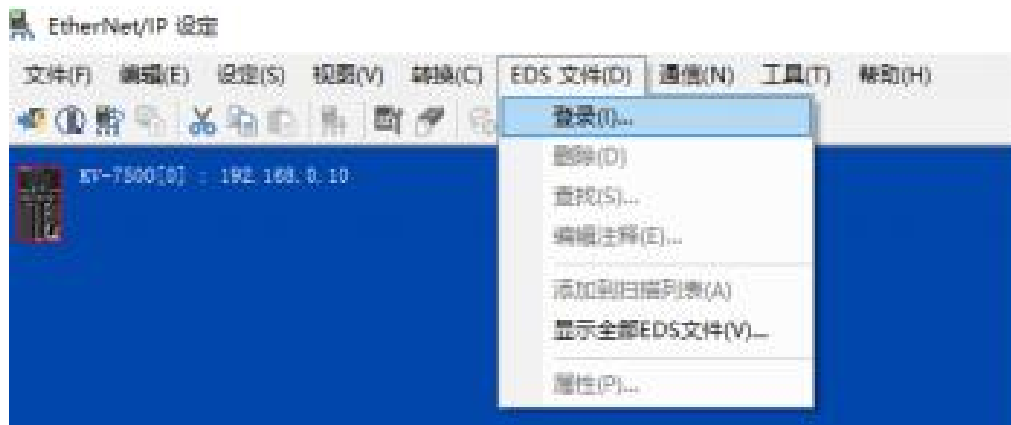
EtherNet/IP





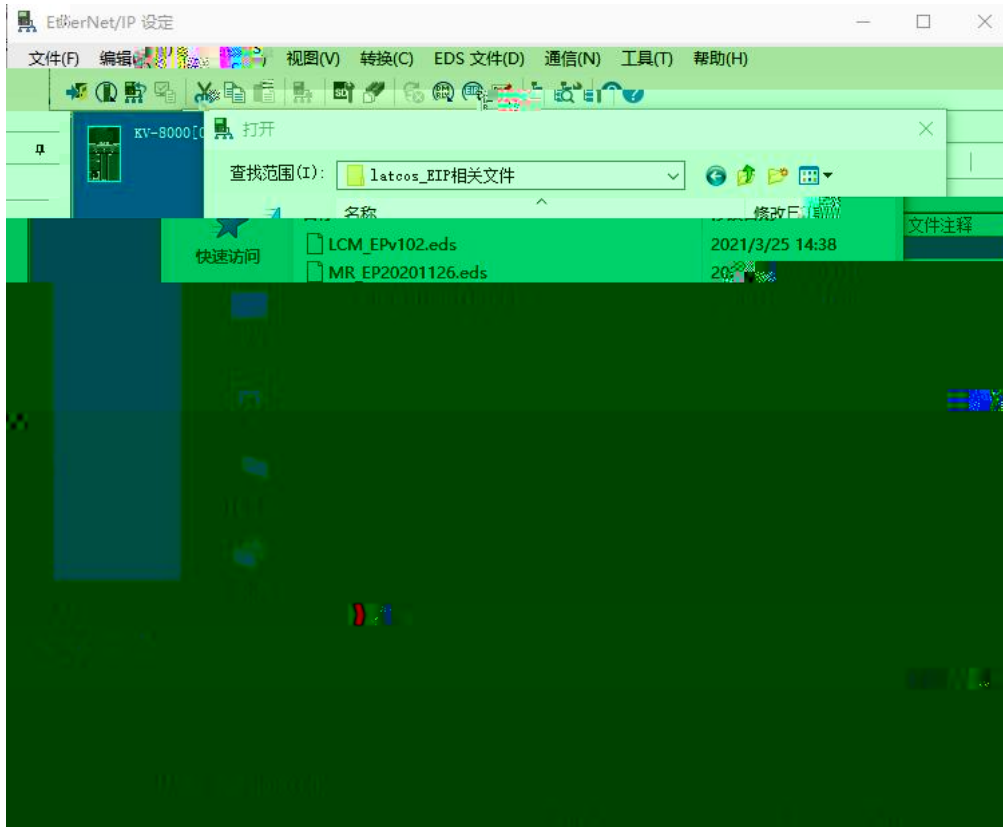
5.4 EDS

“EtherNet/IP” “EDS” “ ” “ ”



EDS

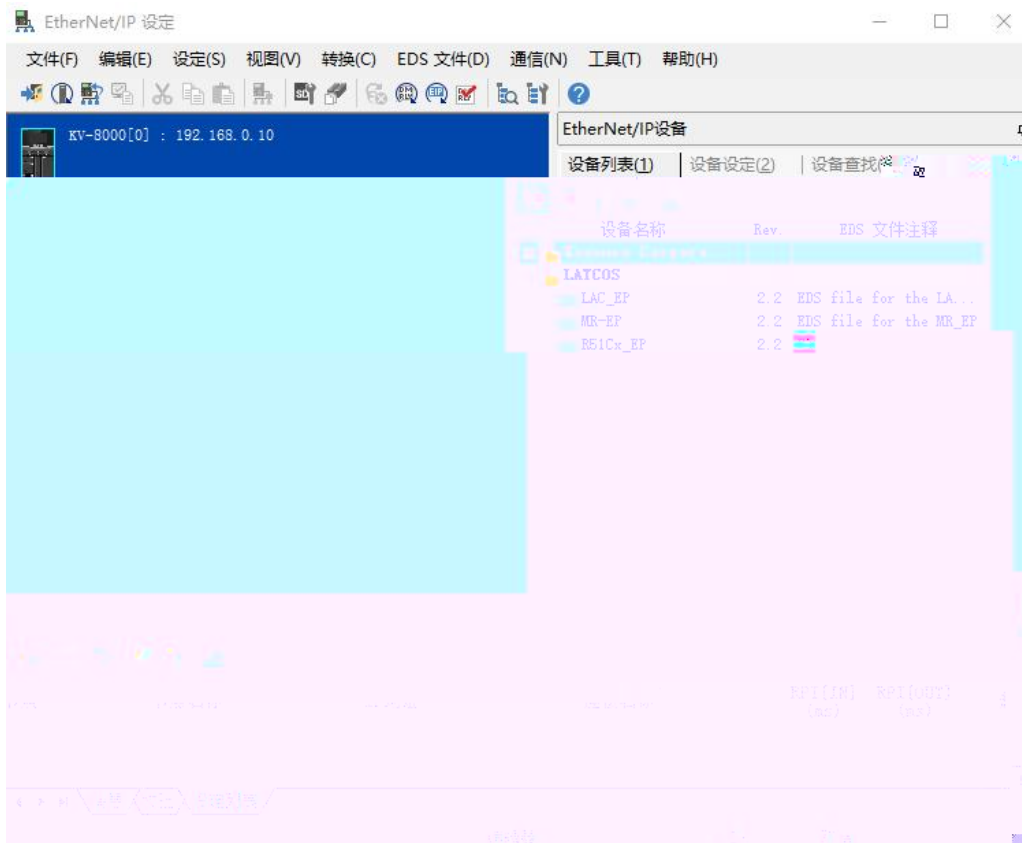
EDS

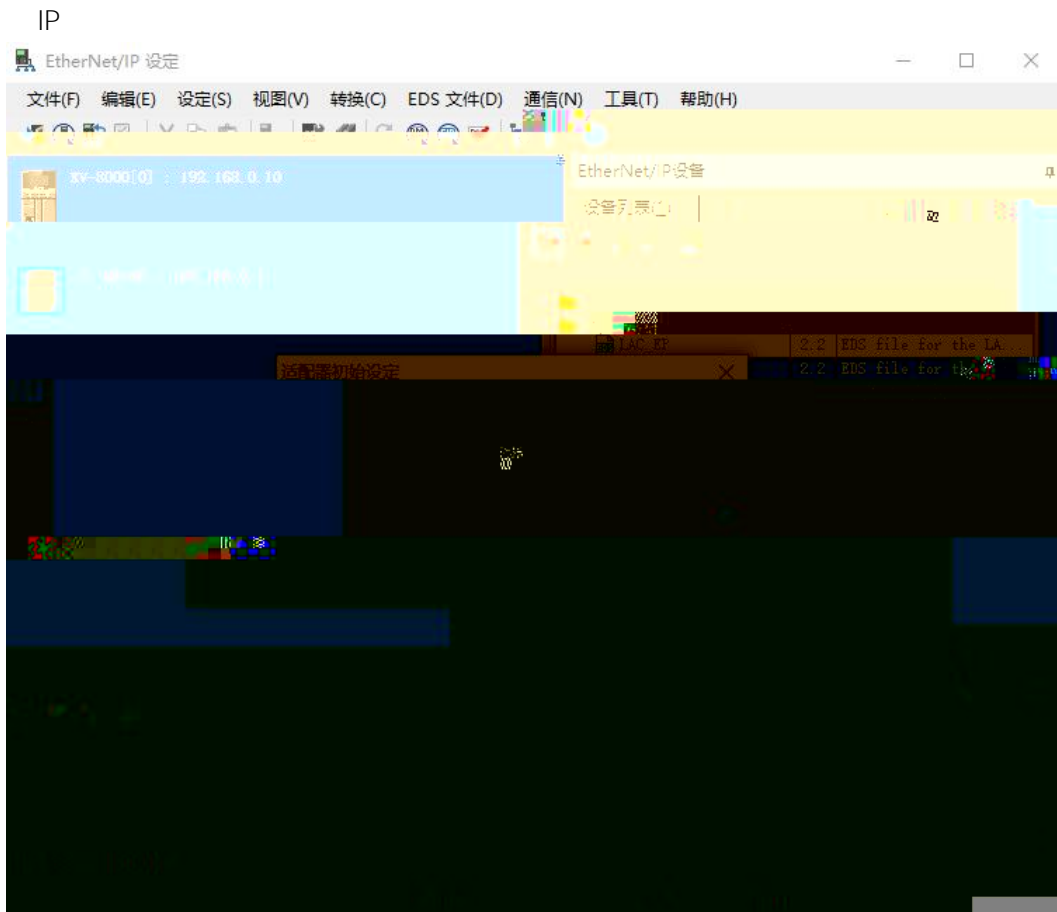


5.5

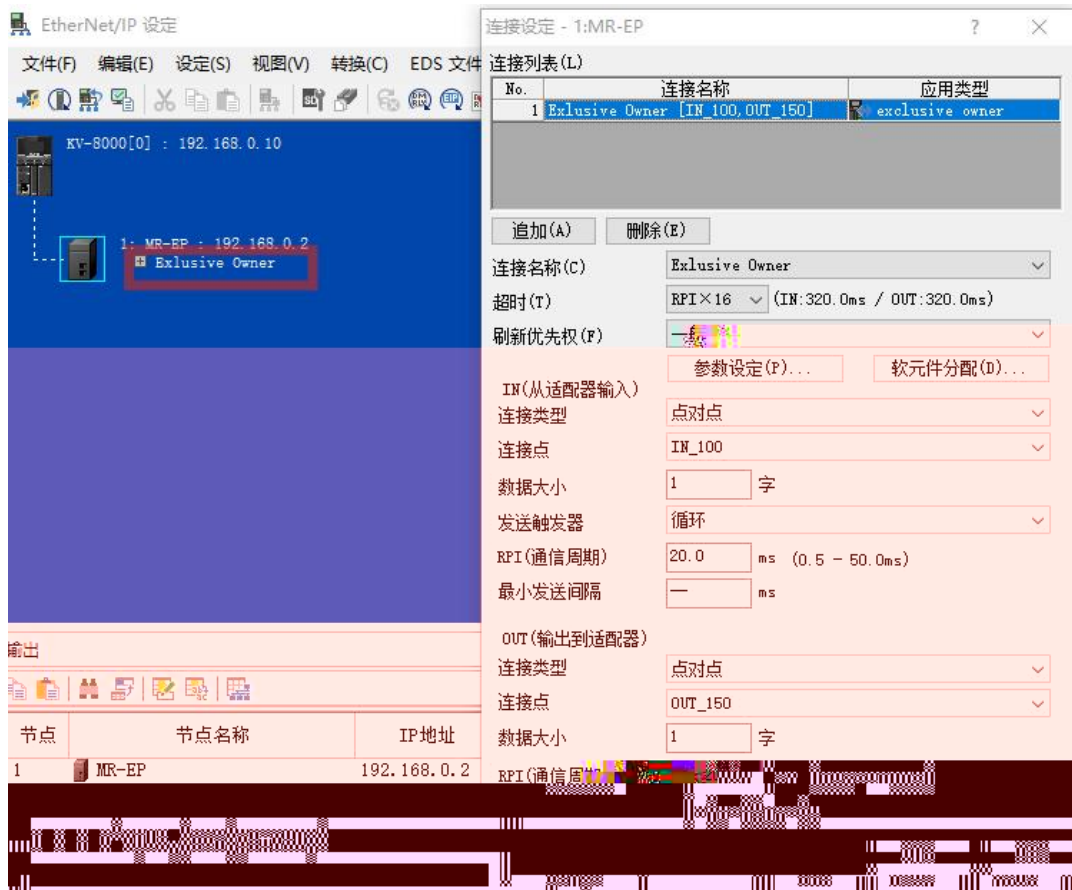
EtherNET/IP

"MR-EP"



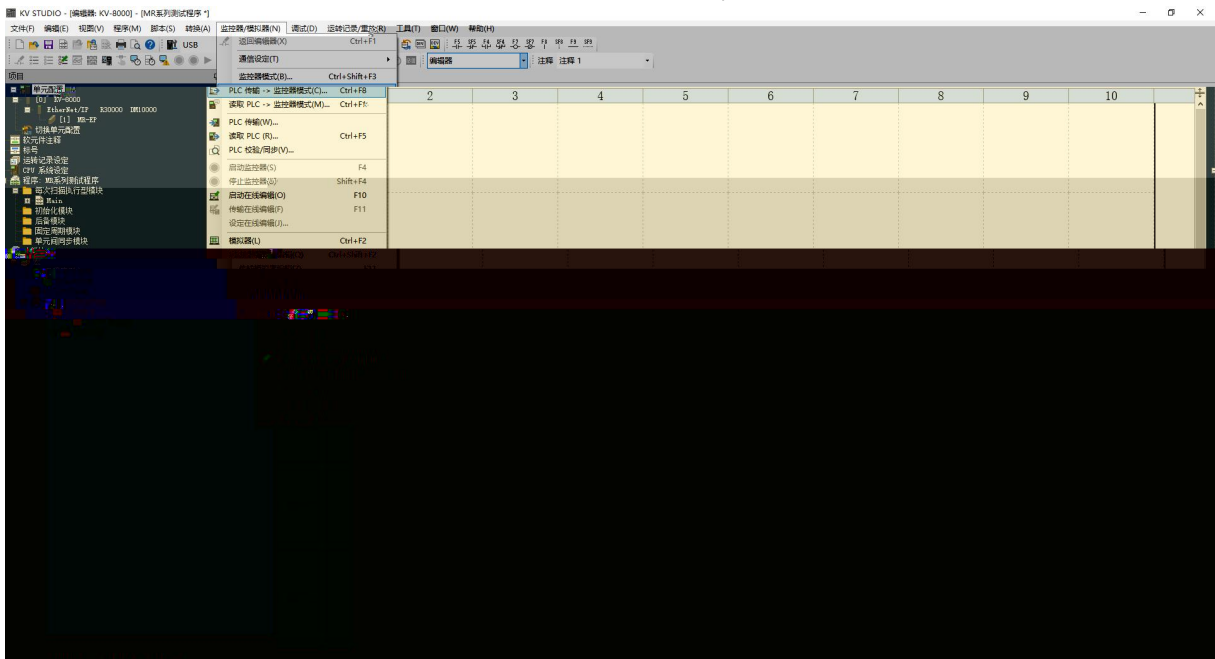


“Exclusive Owner”



PLC

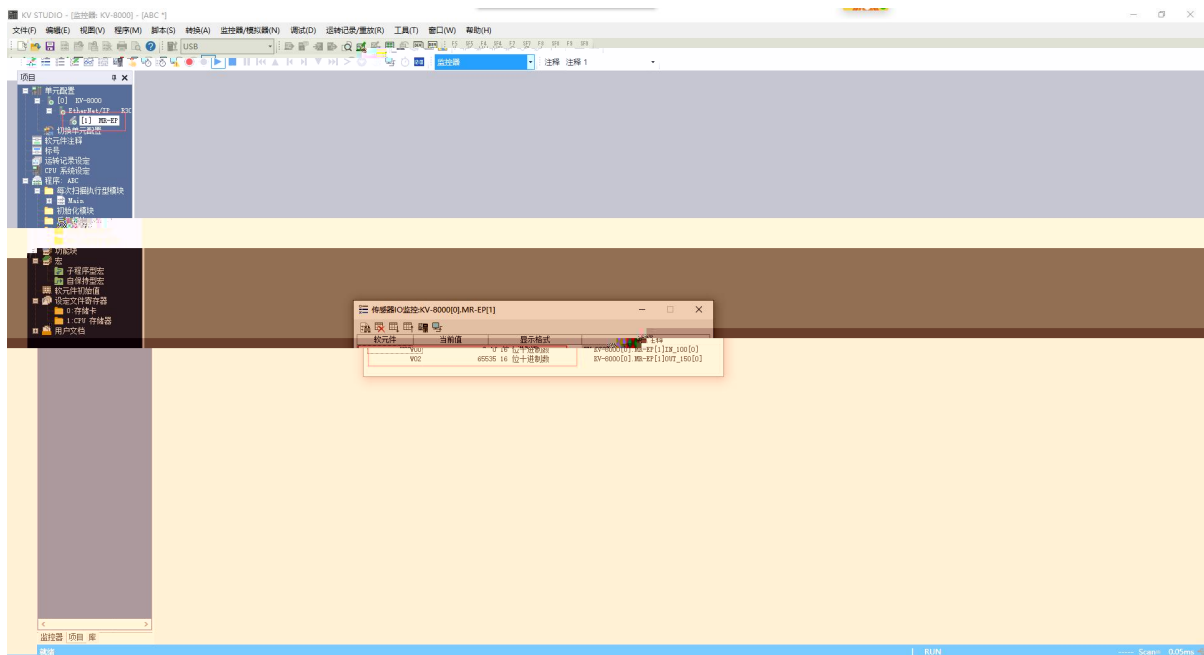
plc



5.6

PLC

" " " "



6.

1.

windows

ping

IP

ping

ping

IP

IP

2

RUN

ERR

IP

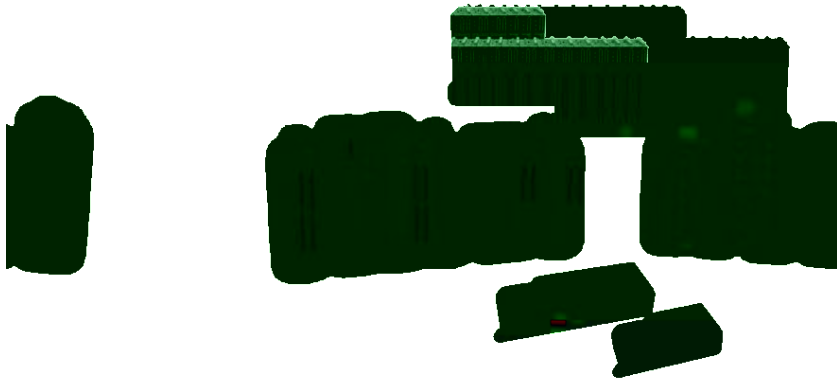
IP

IP



技科自研
LATCOS

0510-85888030



www.latcos.cn

3

0510-85888030

7

701