



2023-3-23

2023 03 23

20223 03 23

1.

KV STUDIO Ver.10G

2.

KV8000	Ethernet/IP	IO	KV STUDIO Ver.10G
IO	.eds	IO	

3.

- KV STUDIO Ver.10G
- IO SRX\_EP20221128.eds

4.

4.1

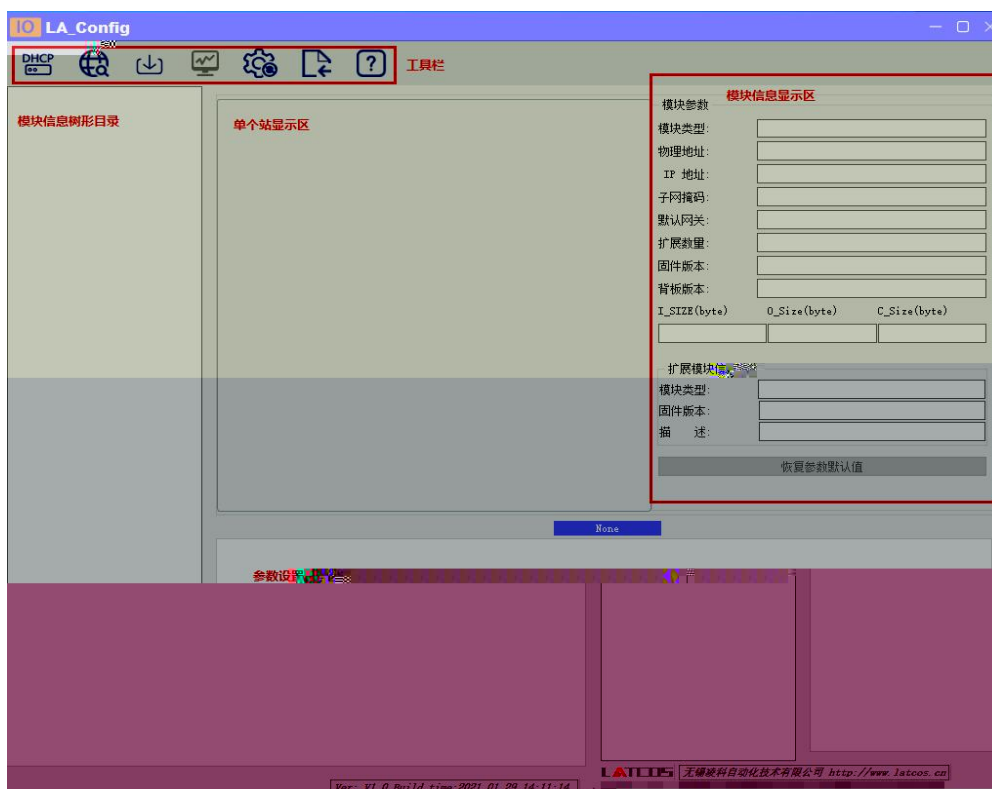
- 1. KV8000 IO
- 2. PLC Ethernet IO

4.2

IP

4.2.1

LAEConfig	IP	IP 192.168.0.x
-----------	----	----------------





4.2.3


IP

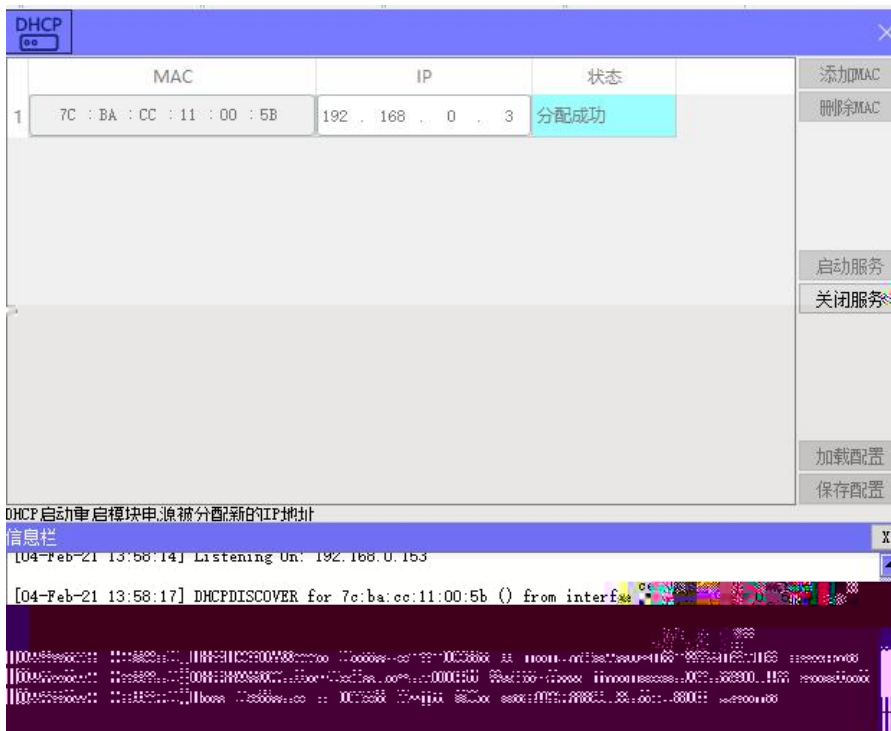
1

"IP"

IP"




 DHCPService " MAC" " MAC"  
 MAC IP " "  
 IP





mac	IP地址	子网掩码	默认网关	模块名称	状态
-----	------	------	------	------	----

扫描时间 5 :S    全局扫描    修改IP    恢复出厂设置    重启模块

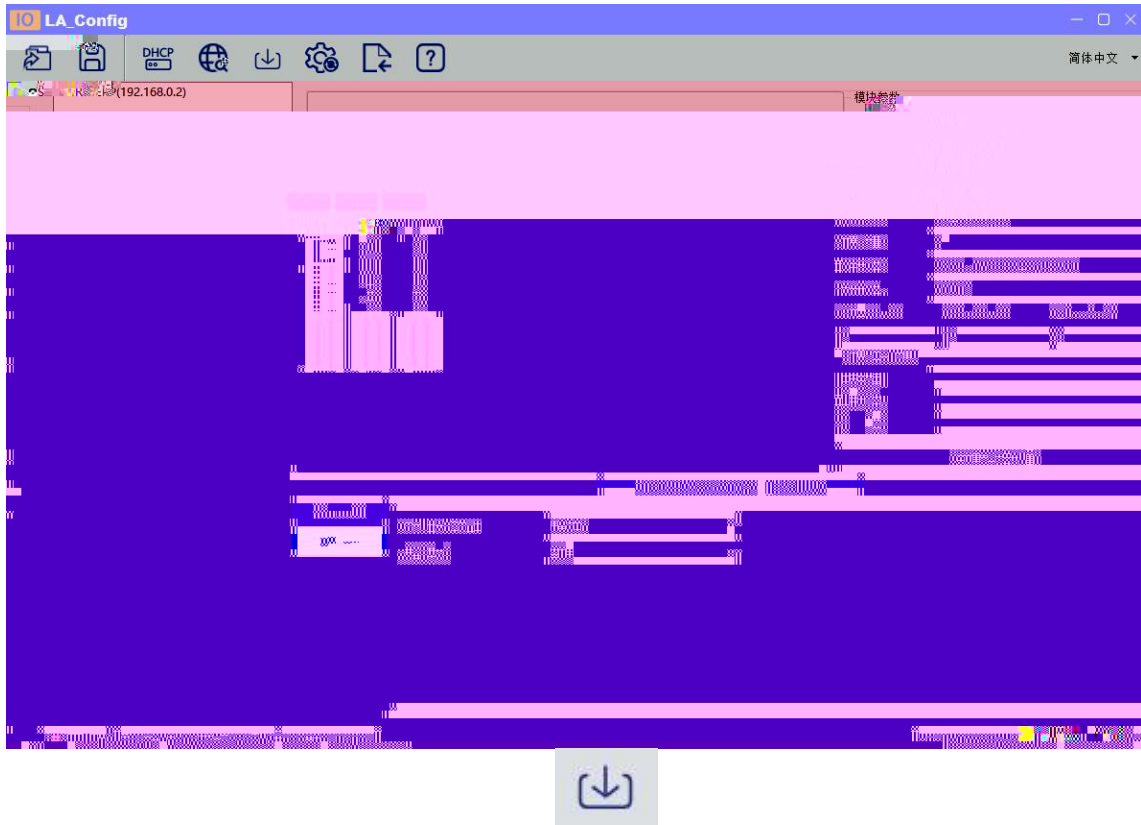
mac	IP地址	子网掩码	默认网关	模块名称	状态
7C-8-0	192.168.0.3	255.255.255.0	192.168.0.1	192.168.0.3	IP

扫描时间 5 :S    全局扫描    修改IP    恢复出厂设置    重启模块

扫描进行中:  100%

IP                    “ IP”                    IP

4.2.4



4.2.5 /

/

1

2) DO\_ 0..7 DQ0.x bit DQ0.x

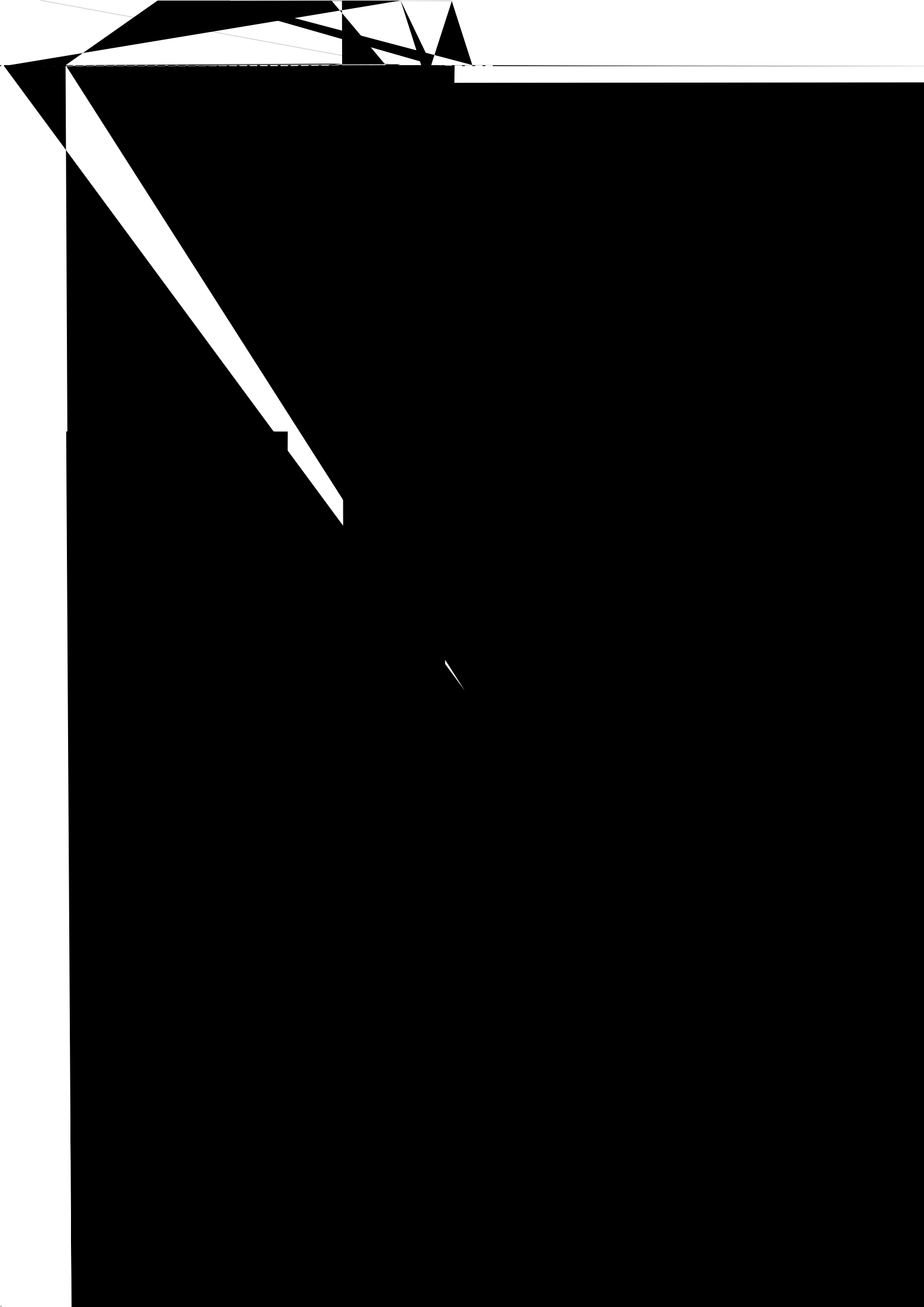
Bit0 DQ-0.0 "Error Mode" bit "1"

"Error Value[7..0]" bit DQ0.x

3) DO\_ 0..7 "Error Mode[7..0]" bit

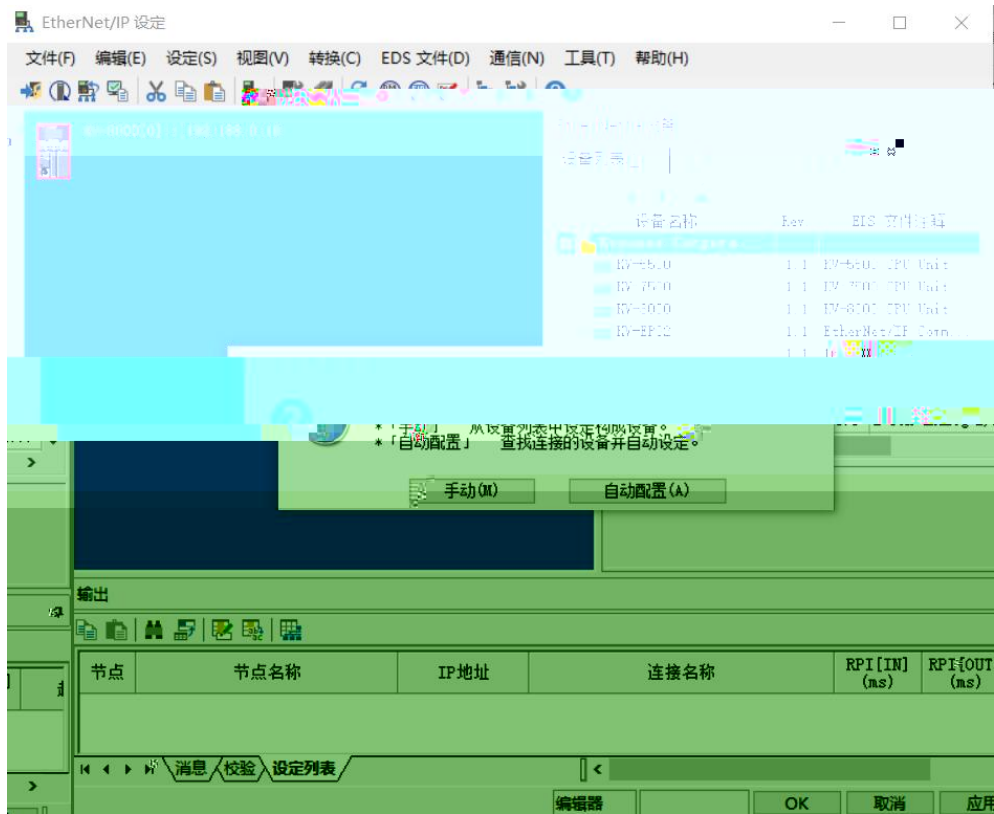
DQ

4) "  "









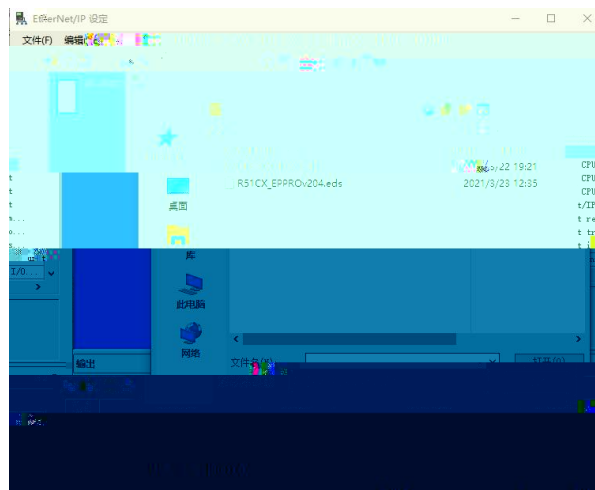
## 5.4 EDS

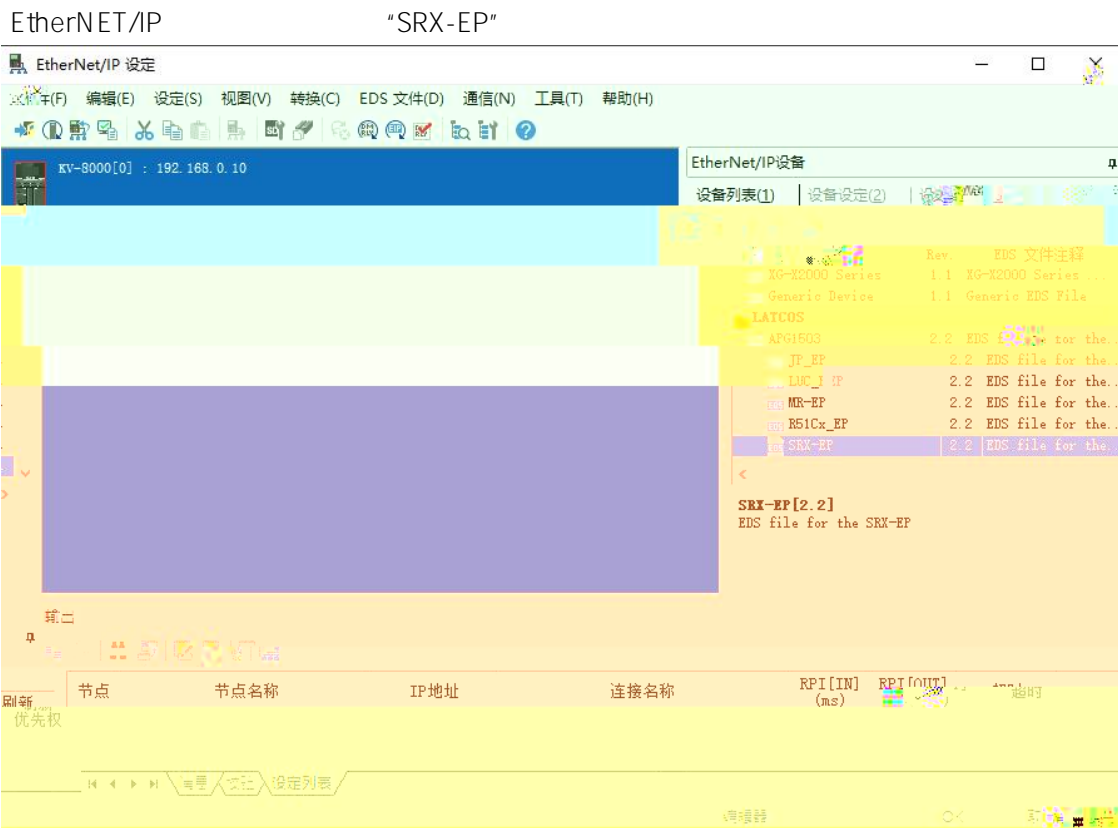
“EtherNet/IP ” “EDS ” “ ” “ ”



EDS

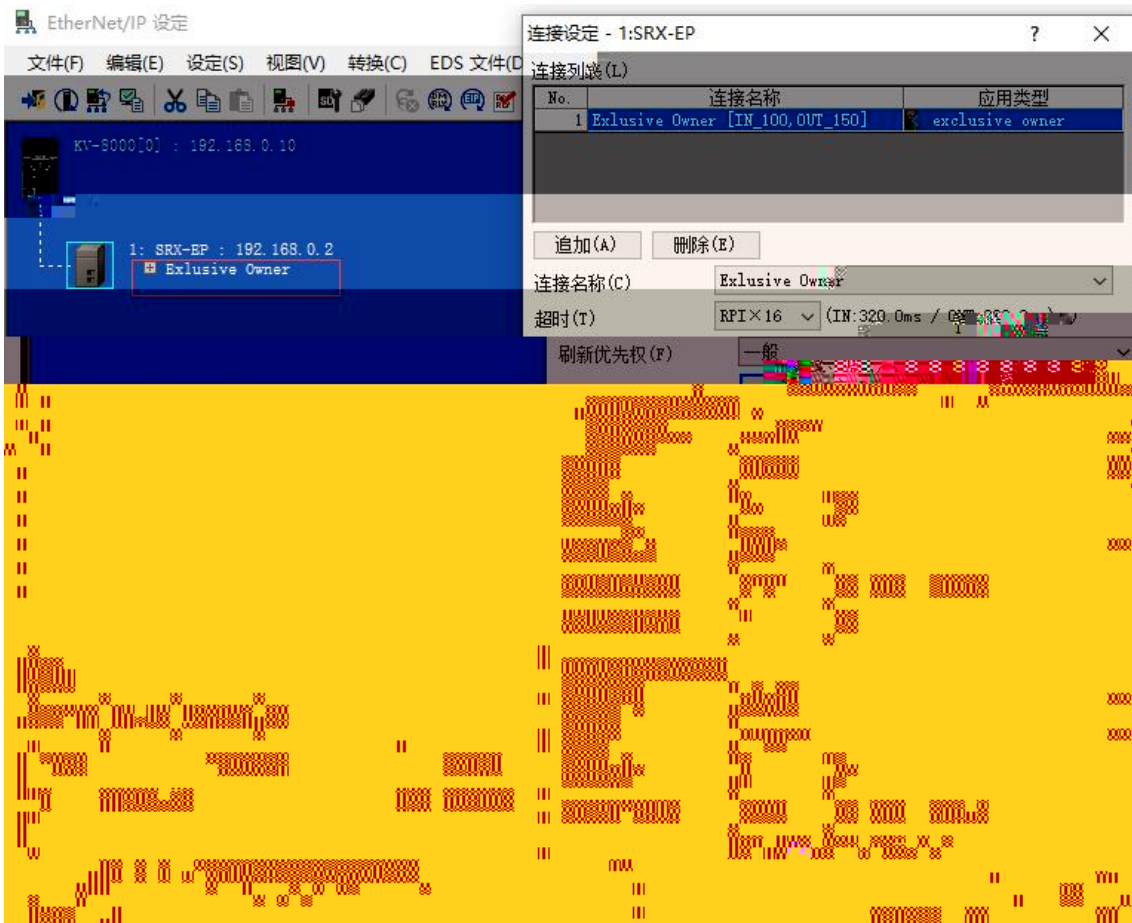
EDS

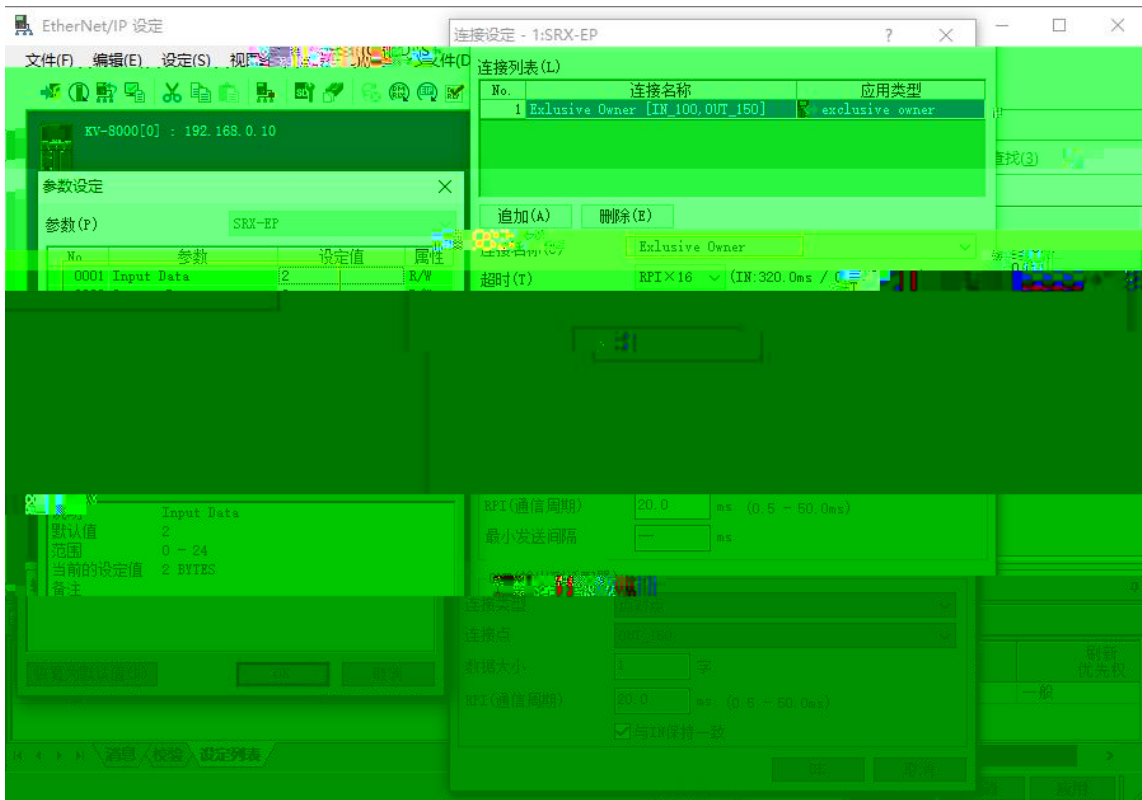




IP

"Exclusive Owner"





a, Exclusive Owner SRX0808x-EP SRX1616x-EP SRX0016x-EP  
 SRX0032x-EP,SRX-A0604-EP,SRX-A0004-EP,SRX-A0008-EP Input Only  
 SRX1600x-EP SRX3200x-EP SRX-A0600-EP,SRX-A1200-EP

b,

c, RPI 5-30

Input Data Output Data 1 =8

	SRX0808x-EP	SRX1616x-EP	SRX1600-EP	SRX3200-EP	SRX-A0600-EP	SRX-A1200-EP	SRX0016x-EP	SRX0032x-EP	SRX-A0604-EP	SRX-A0004-EP	SRX-A0008-EP
Input Data	1	2	2	4	12	24	0	0	12	0	0
Output Data	1	2	-	-	-	-	2	4	8	8	16
	Exclusive owner		Input Only				Exclusive owner				

LAECONFIG

I_SIZE(byte)	O_Size(byte)	C_Size(byte)
<input type="text"/>	<input type="text"/>	<input type="text"/>



