



PROFINET SRX-PN S7-200SMART



2023-04-03

2023 4 3

2023 4 3

S7-200SMART PLC PROFINET IO

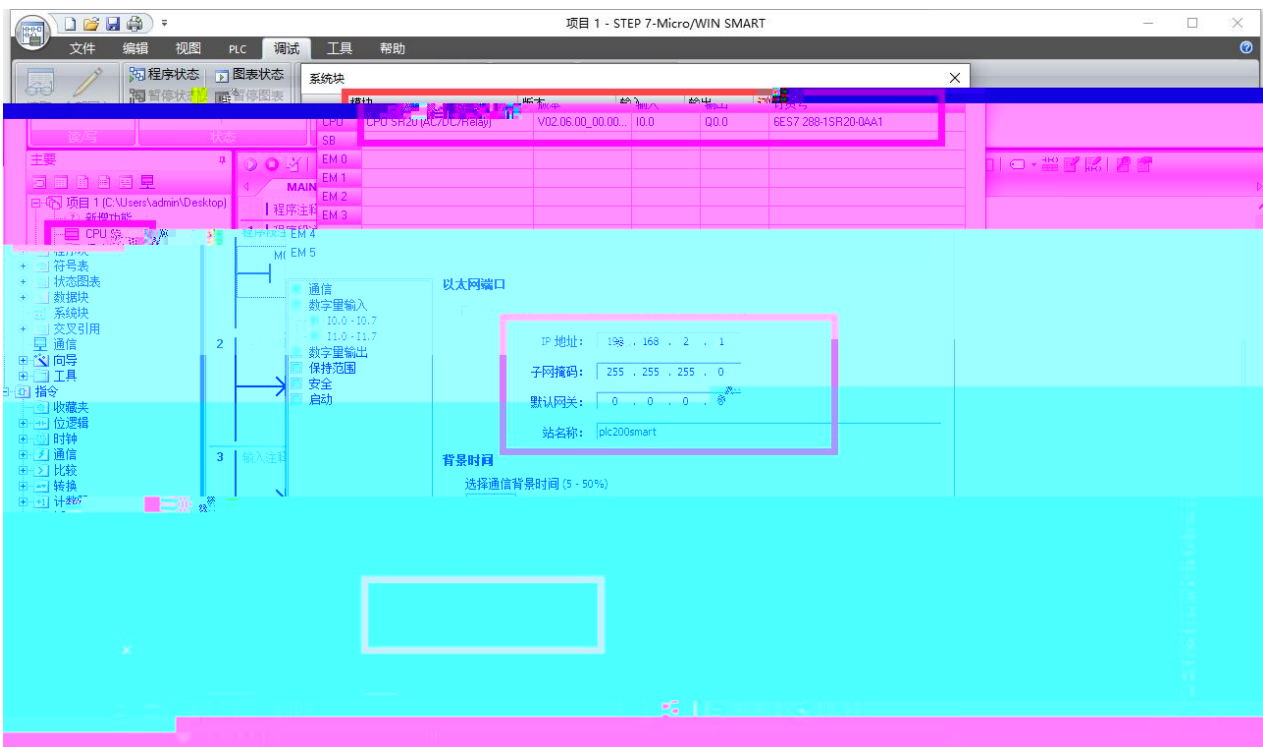
S7-200SMART PLC PROFINET IO step7 IO

IO

- STEP 7-MicroWIN SMART
- IO GSDML-V2.31-LATCOS-SRX_PN-20220901

1. S7-200SMART PLC IO
 2. PLC IO X1 IO X2
- Roma lab Servng

1. S7-200SMART STEP-7-MicroWIN-SMARTV2.4 PLC



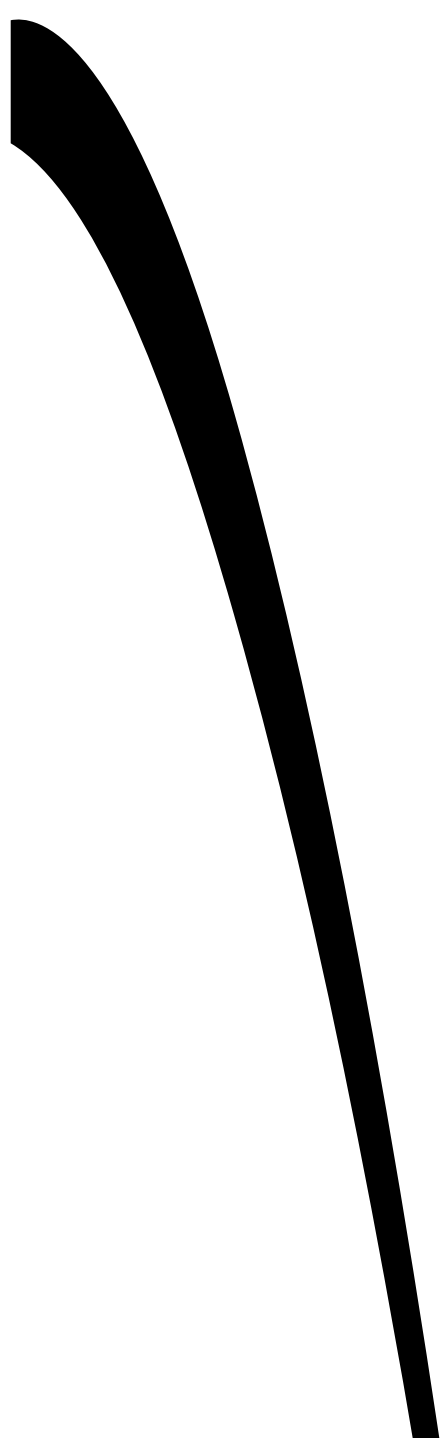
3.PROFINET

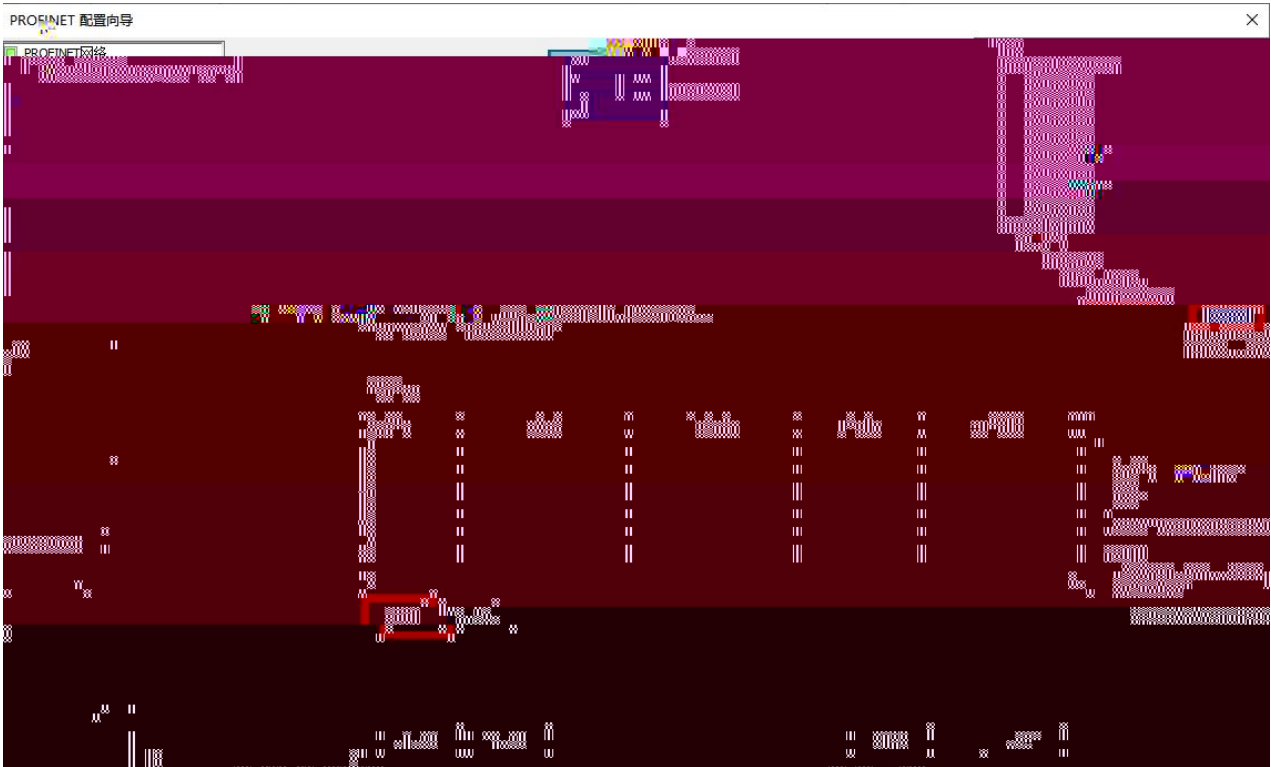
I/O

JP-PN

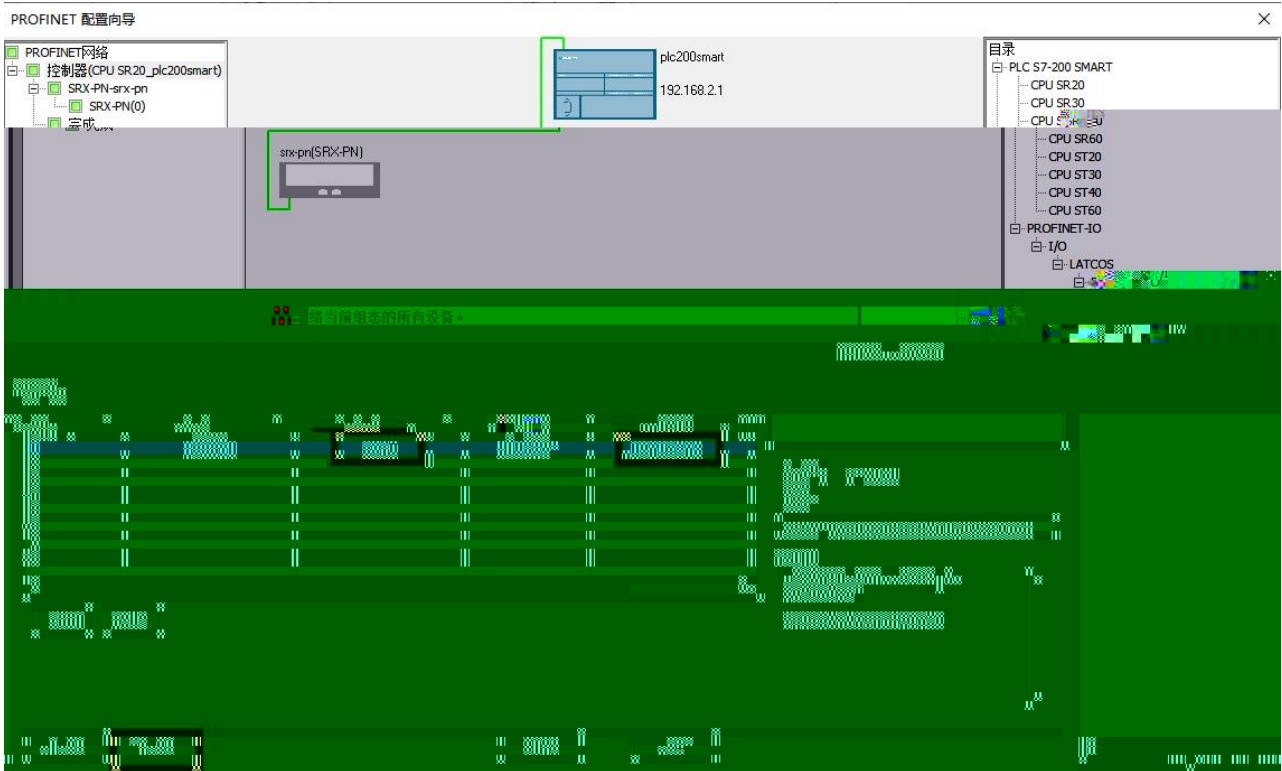
" " "

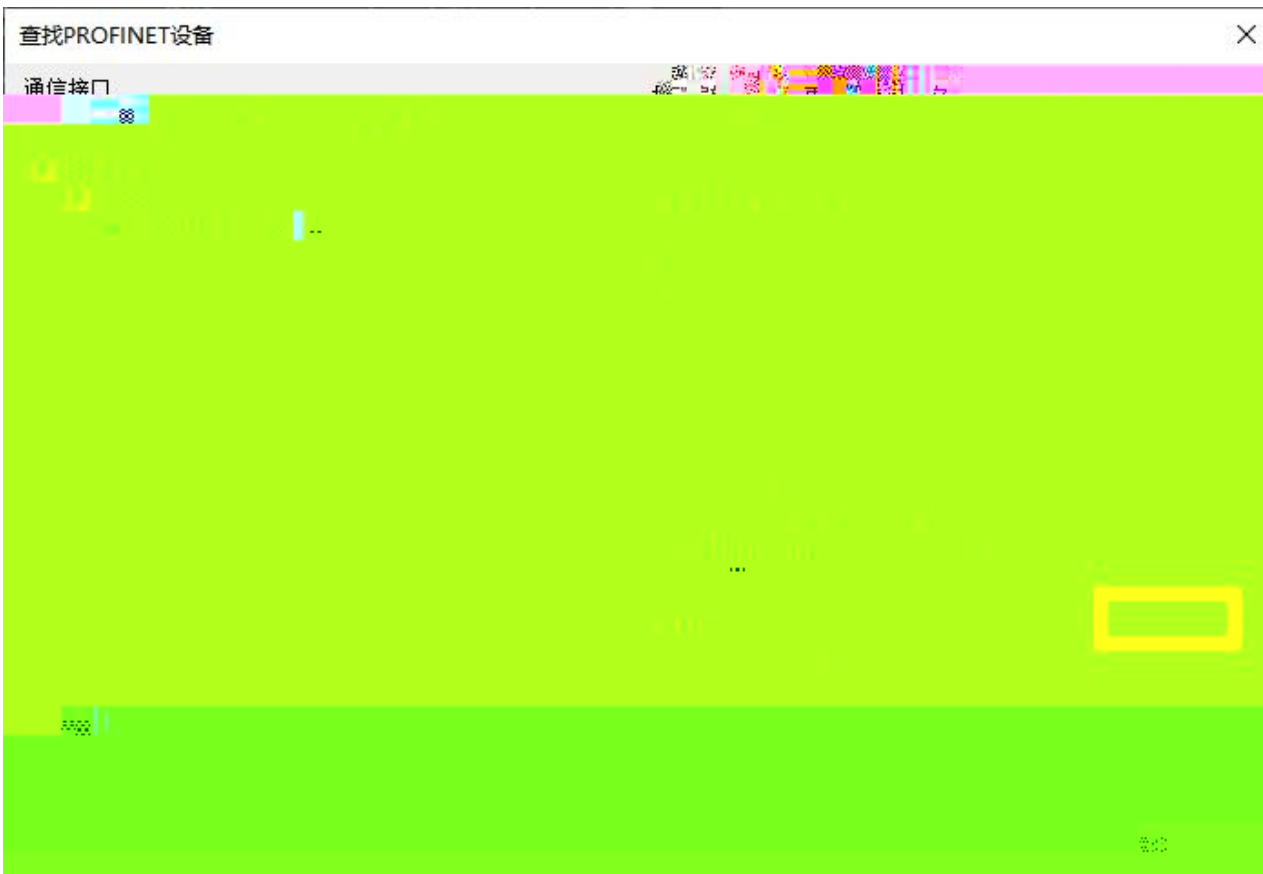
E



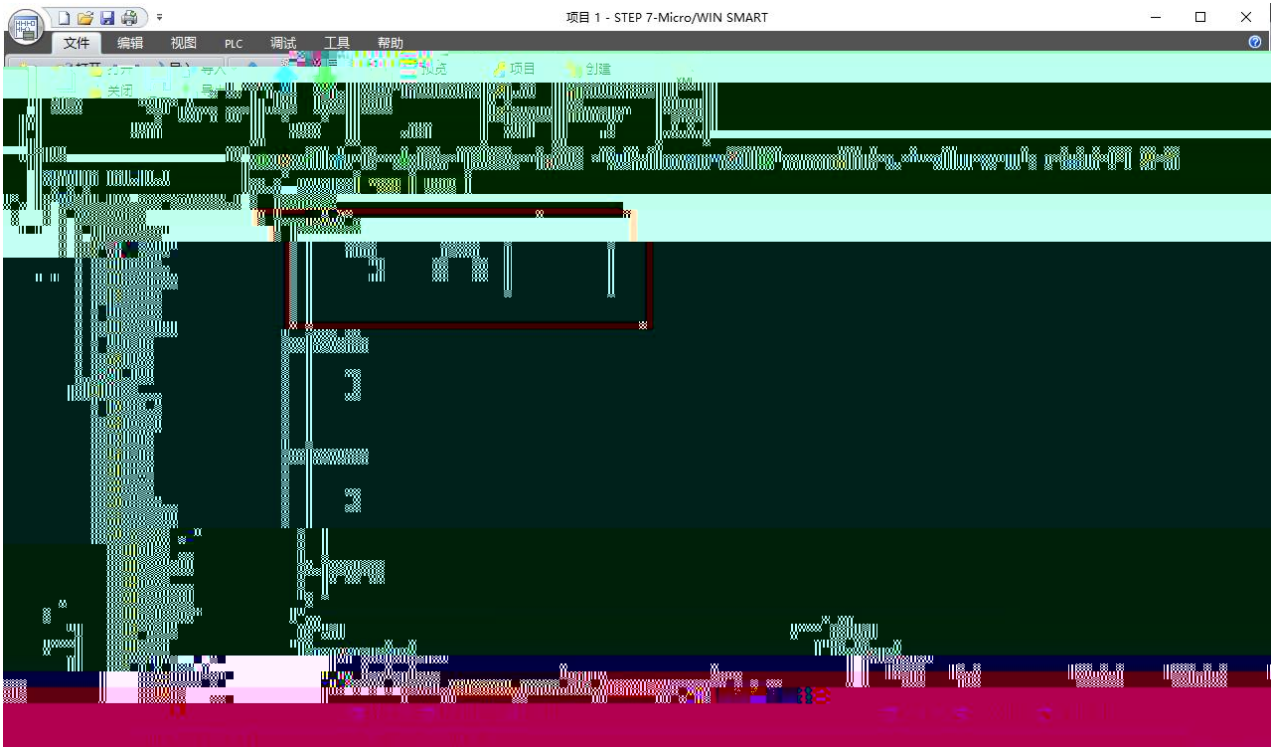


IP





5. JP-PN



6. PLC

" " " CPU "

