

透科自动化

CCLINK_IE_Field Basic LUC-CE FX5U PLC



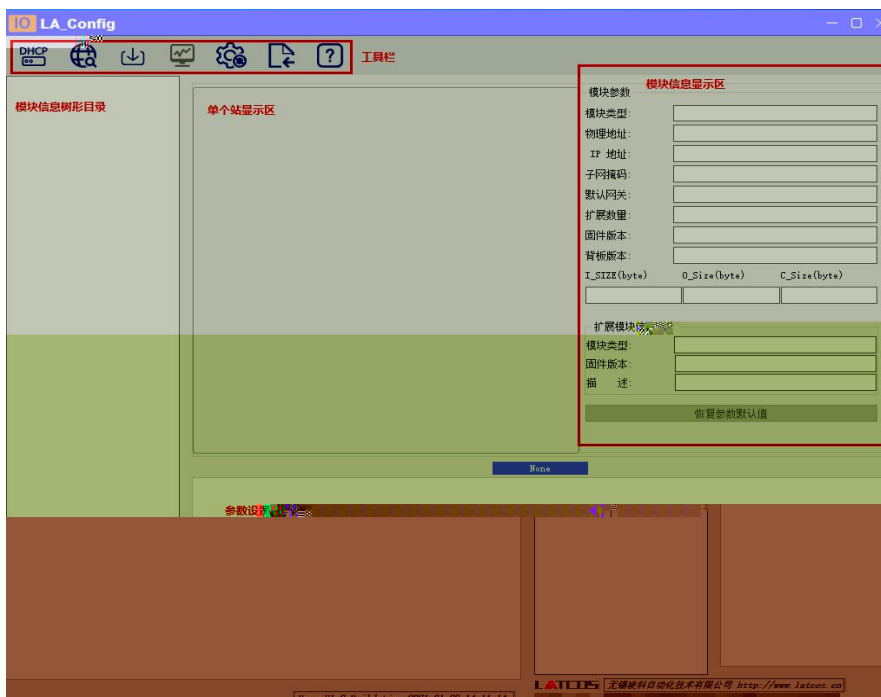
FX5U PLC CCLINK_IE_Field Basic LUC-CE IO

FX5U PLC CCLINK_IE_Field Basic LUC-CE IO GX-
WORKS3 IO

- GX-WORKS3

1. FX5U PLC IO
2. PLC Ethernet CCLINK_IE_Field Basic IO

LAEConfig IP IP 192.168.0.x











DHCP **扫描** **下载** **监控** **参数** **描述文** **帮助**
服务 **模块** **参数** **件导入**

IP地址范围: 192 . 168 . 0 . 1 — 192 . 168 . 0 . 255

0%

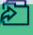






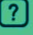
开始 停止



IP

IP

LA_Config

简体中文

> LUC-CE(192.168.0.2)

0	1
LUC-CE	ES1160D

General

IP地址分配方式: 动态IP

安全模式: 启用

模块参数

模块类型: LUC-CE

物理地址: 7C-BA-CC-00-00-00

IP 地址: 192.168.0.2

子网掩码: 255.255.255.0

默认网关: 192.168.0.2

扩展数量: 1

固件版本: V1.01 Nov 18 2022 11:35:50

背板版本: NONE

I_SIZE(byte)	O_Size(byte)	C_Size(byte)
2	0	1

扩展模块信息

模块类型:

固件版本:

描述:

恢复参数默认值

0: LUC-CE(CC-LINK FB E 转换器模块)

无峰波利自动化技术有限公司 <http://www.lateos.cn> Ver: V1.0_Build time: 2023.03.01 14:53:07

"IP"

IP"

DHCP

	MAC	IP	状态
1	7C : BA : CC : 15 : 82 : 3E	192 . 168 . 0 . 1	未分配

添加MAC
删除MAC
启动服务
关闭服务
加载配置
保存配置

DHCP 启动时, 启模块申请, 源被分配新的IP地址

信息栏



DHCPService

" MAC" " MAC"

MAC

IP

" "

IP

DHCP

	MAC	IP	状态
1	7C : BA : CC : 15 : 82 : 3E	192 . 168 . 0 . 3	分配成功

添加MAC
删除MAC
启动服务
关闭服务
加载配置
保存配置

DHCP 启动时, 启模块申请, 源被分配新的IP地址

信息栏

```
[23-Mar-23 10:50:19] Warning: Interface 192.168.10.19 is not Static, ignored
[23-Mar-23 10:50:19] Lease URL: http://127.0.0.1:6789
[23-Mar-23 10:50:19] Listening On: 192.168.0.211
[23-Mar-23 10:50:20] DHCPREQUEST for 7c:ba:cc:15:82:3e () from interface
[23-Mar-23 10:50:20] Host 7c:ba:cc:15:82:3e (Host7cbacc15823e) allotted 192.168.0.3 for 360 seconds
[23-Mar-23 10:50:22] Network changed, re-detecting Static Interfaces..
```

2



mac	IP地址	子网掩码	默认网关	模块名称	状态
-----	------	------	------	------	----

扫描时间 5 :S

全局扫描 修改IP 恢复出厂设置 重启模块

mac	IP地址	子网掩码	默认网关	模块名称	状态
7C-BA-CC-00-00-00	192 . 168 . 0 . 2	255 . 255 . 0 . 255	192 . 168 . 0 . 2	线网	未操作

扫描时间 5 :S

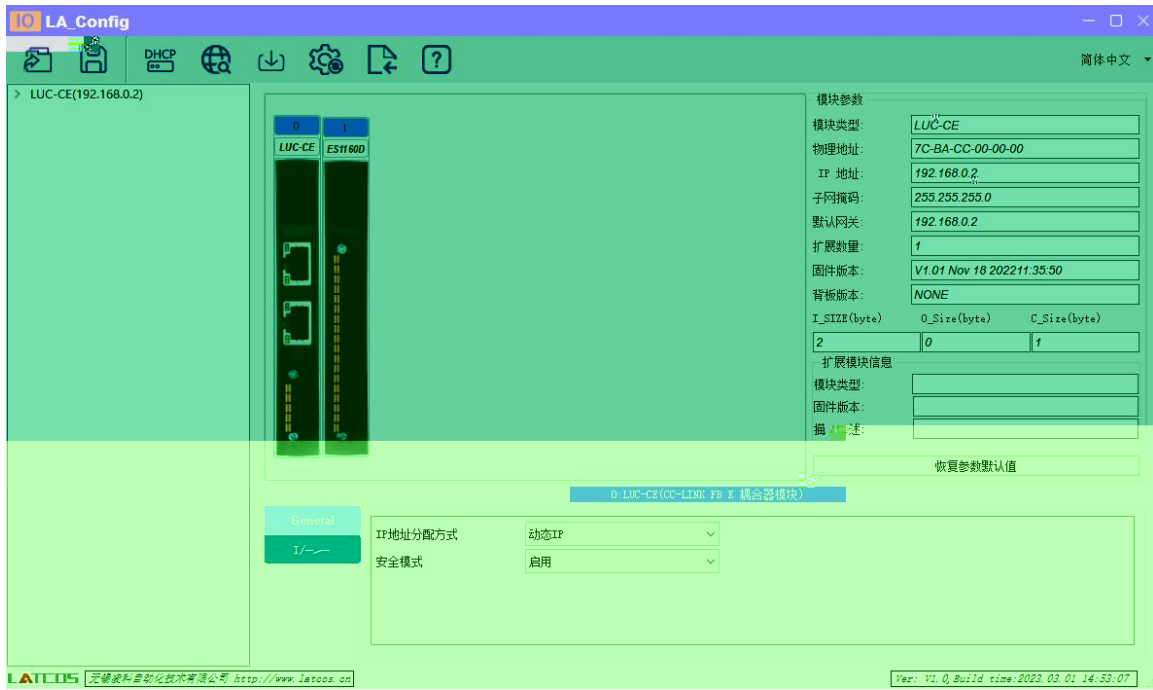
全局扫描 修改IP 恢复出厂设置 重启模块

扫描进行中:

IP

" IP"

IP



/

1

2) DO_ 0..7 DQ0.x bit DQ0.x
Bit0 DQ-0.0 "Error Mode" bit "1"

"Error Value[7..0]" bit DQ0.x
3) DO_ 0..7 "Error Mode[7..0]" bit
DQ

4)



GX Words 3

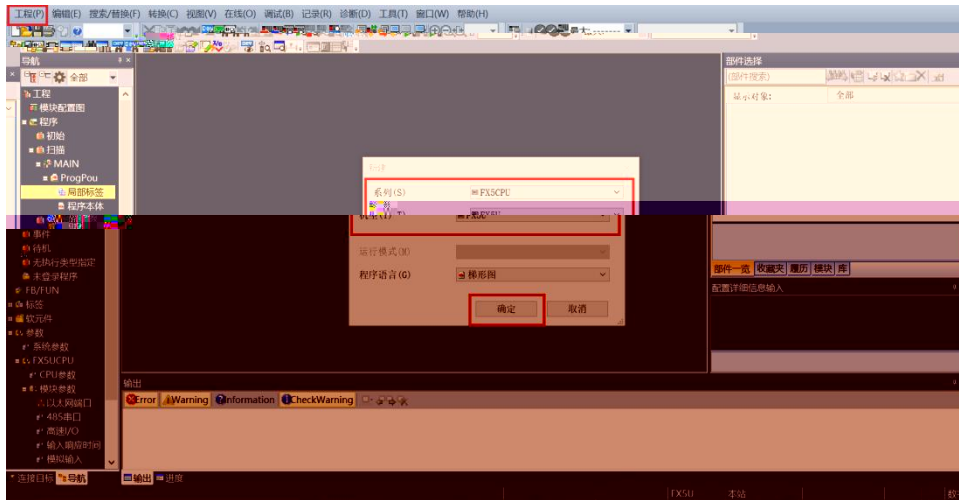
“ ” “ ” “ ”

PLC

CPU

5U

CPU

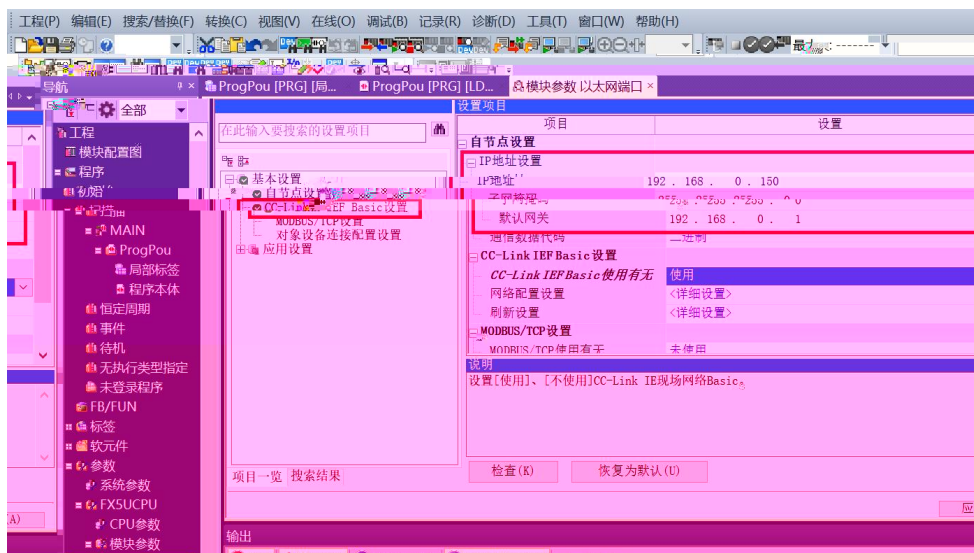


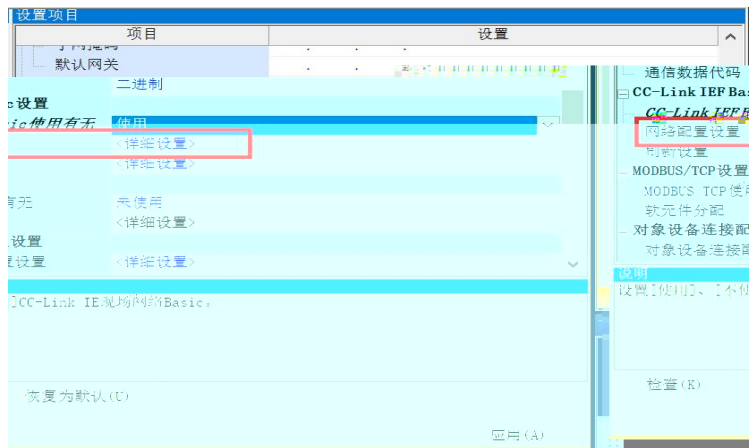
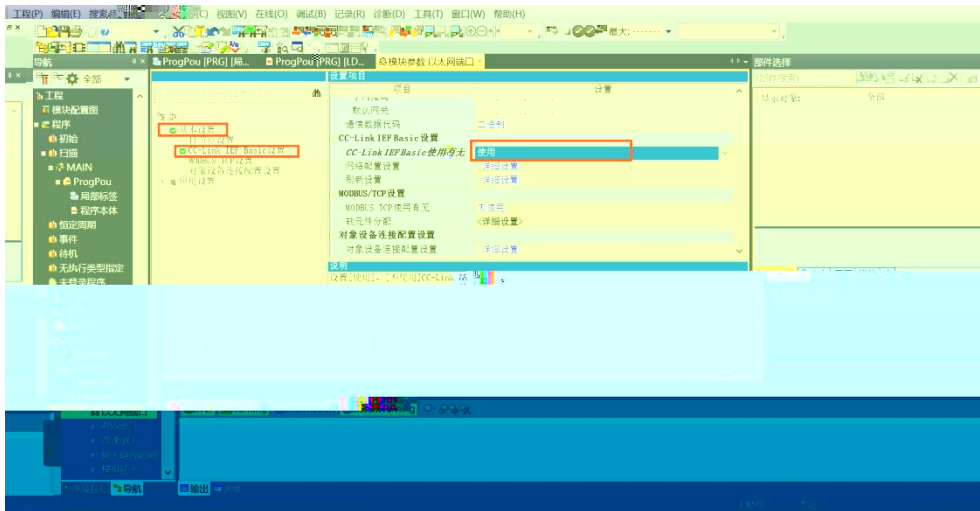
/FX5UCPU/ /



PLC

IP

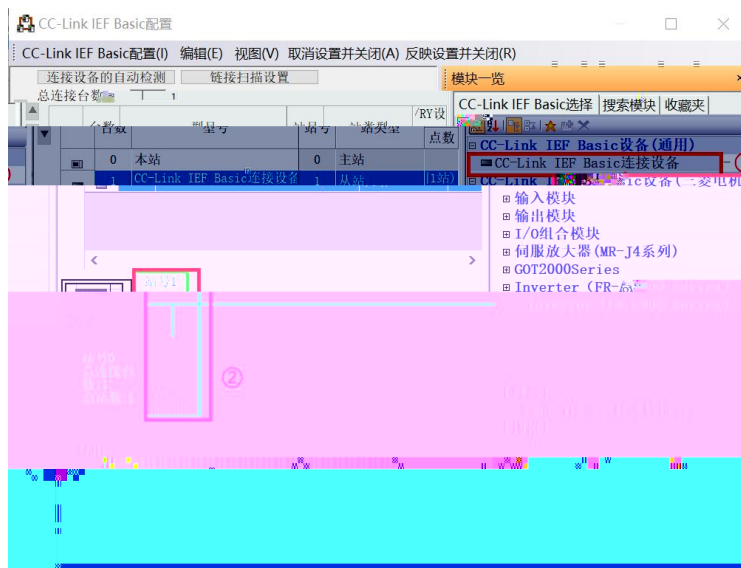




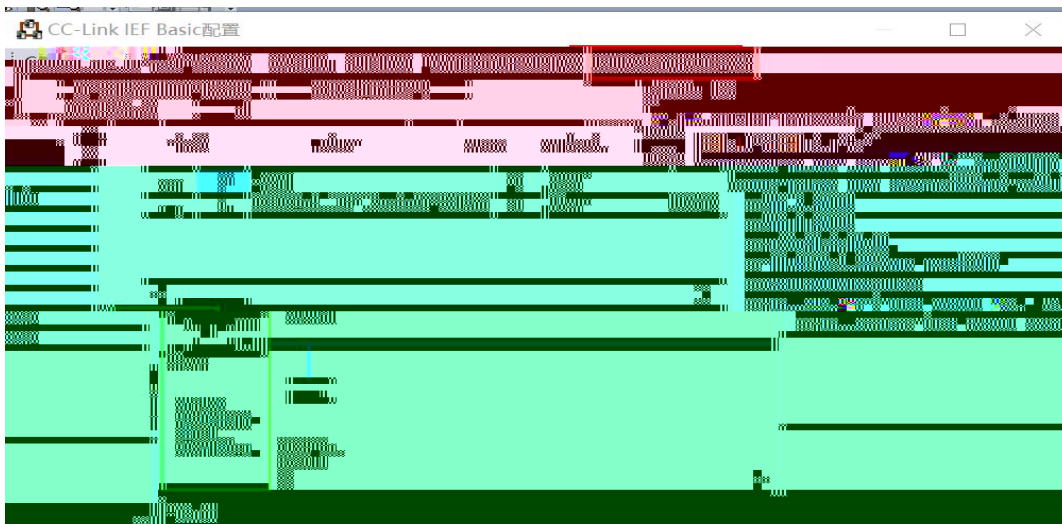
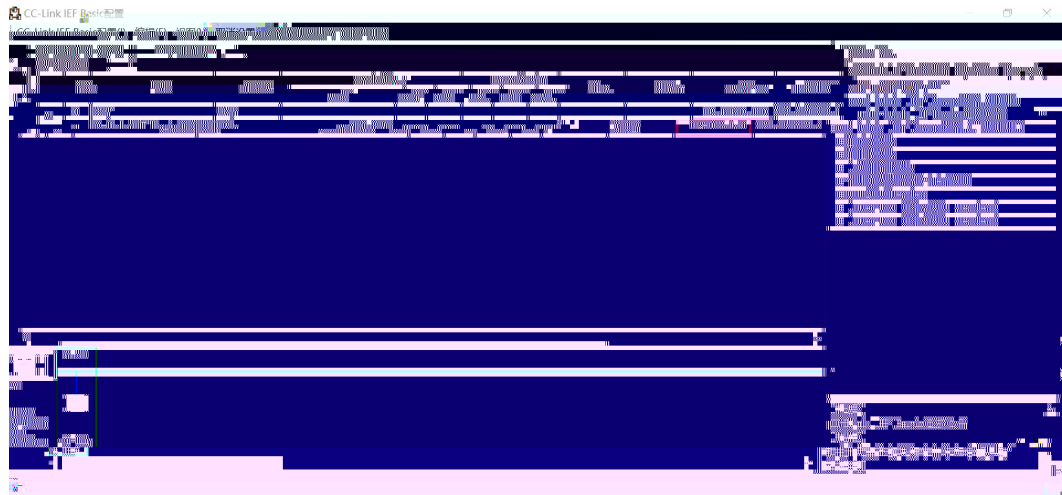
CC-Link IE Field Basic

IO

CPU

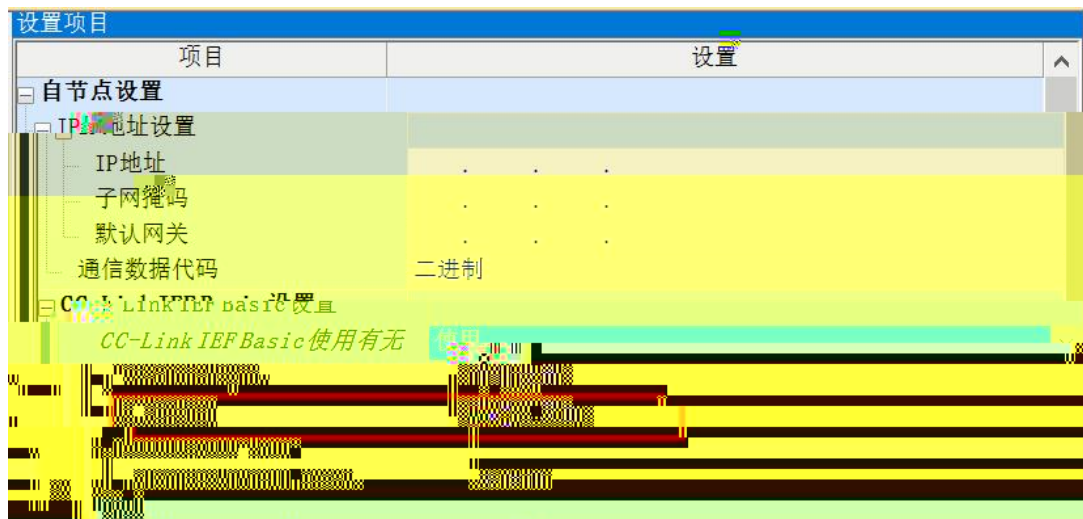


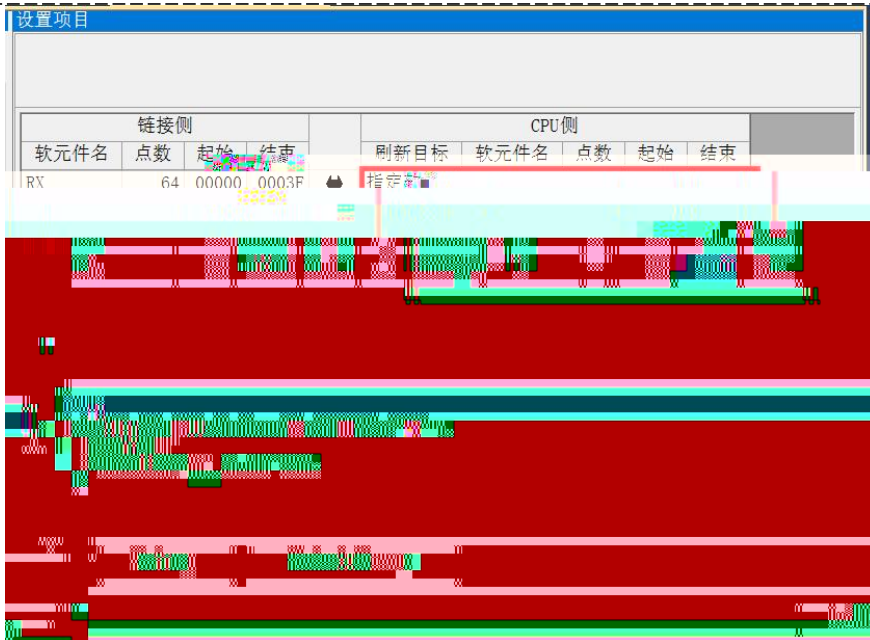
CC-Link IE Field Basic IP



CC-Link IE Field Basic

IO





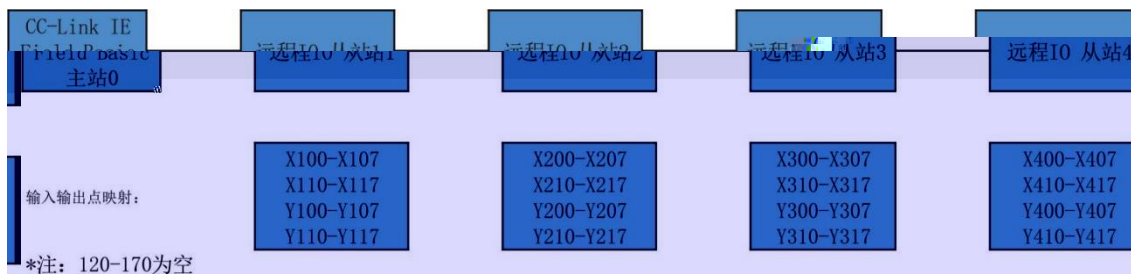
CC-Link IE Field Basic

64

64DI 64DO

32AI 32AO

X100,Y100 IO



PLC

"

"CC-Link IE

Field Basic

IO

